

J Boyer Farms' Journey with Interseeding

Jack C Boyer
J Boyer Farms, Inc.
Reinbeck, IA



Outline

- Research Project Update
 - 2014 Seed Corn CC Seeding Date vs Biomass/N capture
 - 2015 Field Corn Interseeding in V₄ Corn
 - 2016 Seed Corn Interseeding in V₄ Corn
 - 2017 Field Corn Interseeding in V₄ Corn

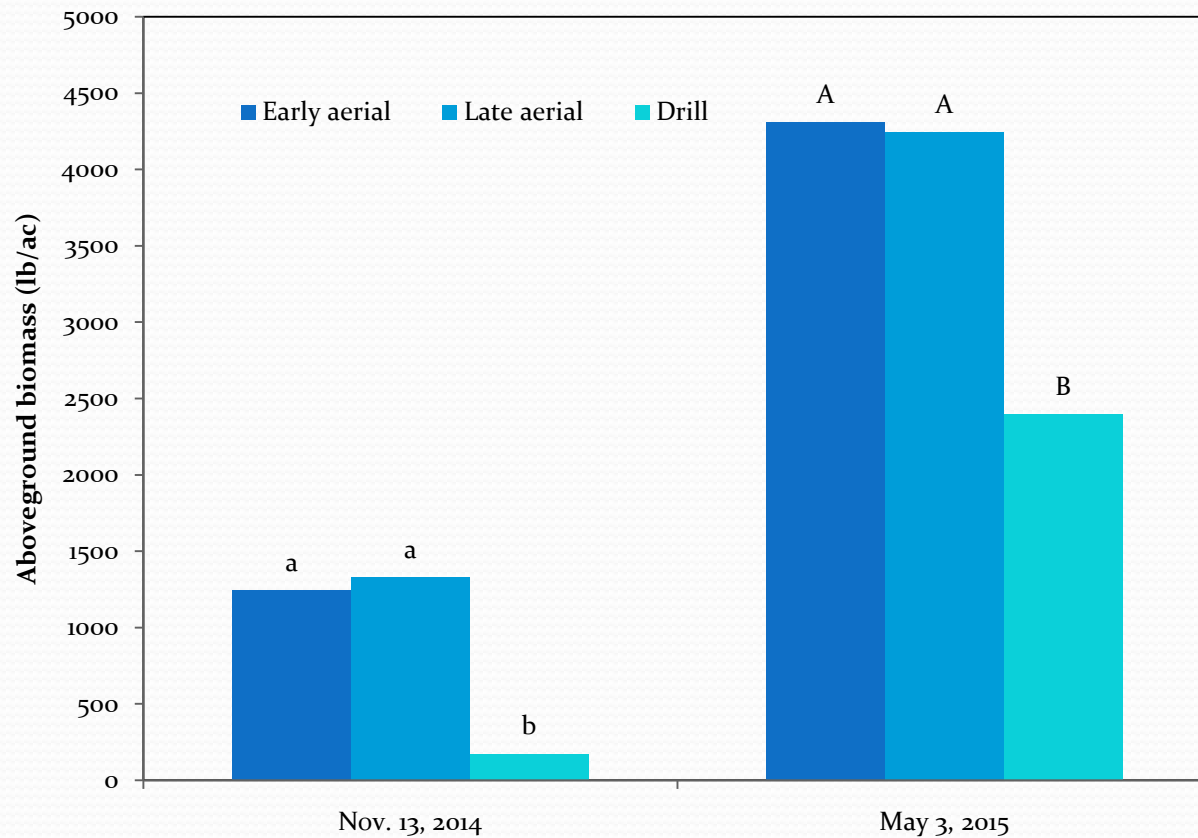
2014 Seed Corn-Cover Crop Seeding Date Trial

Cover Crop Seeding Date Trial

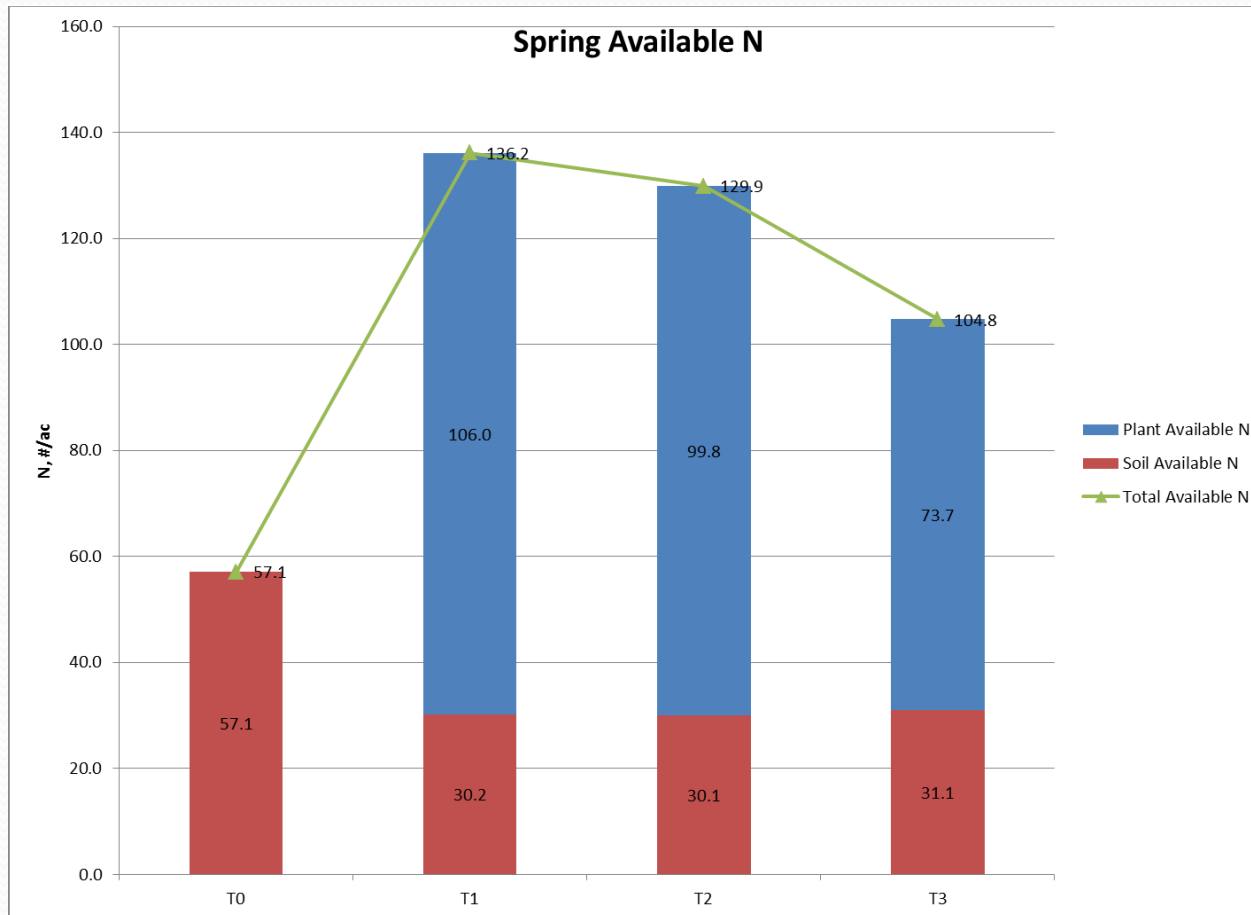
- 1st seeding 8/19/2014
- 2nd Seeding 8/29/2014
- 3rd Drilled 9/25/2014



CC Seeding Date - Biomass



Available N



2015 Field Corn-Cover Crop Interseeding @ V4

2015

Field Corn-Cover Crop Interseeding @ V4

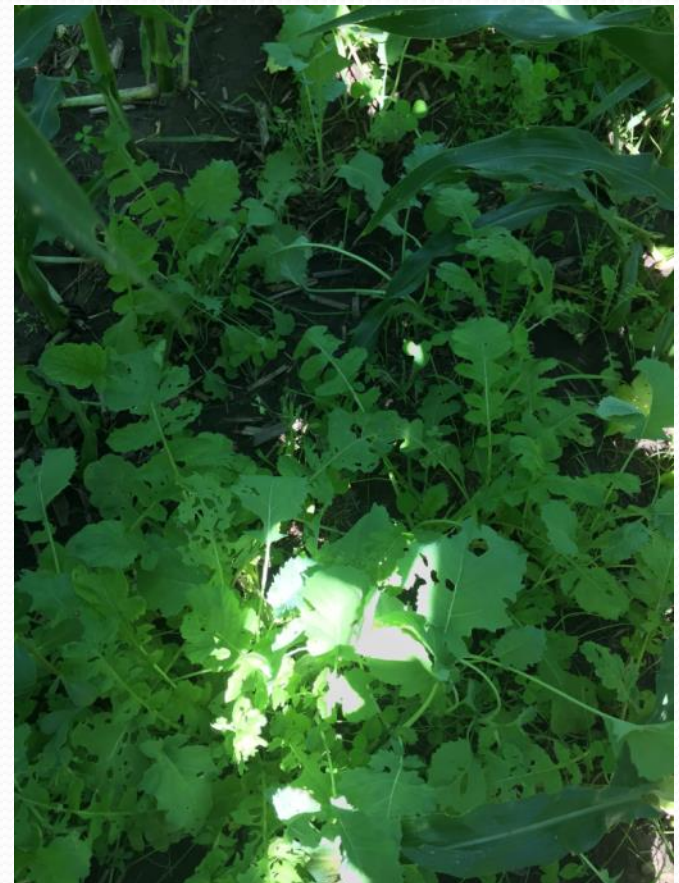
Photo 8-14-15
9 weeks post



2016 Seed Corn-Cover Crop Interseeding @ V4

2016

Seed Corn-Cover Crop Interseeding @ V4



2017 Field Corn-Cover Crop Interseeding @ V4



2017

Field Corn-Cover Crop Interseeding @ V4



Boyer Interseeding Trial 2017 - Corn Leaf Architecture



Figure 1 - Horizontal Leaf Architecture

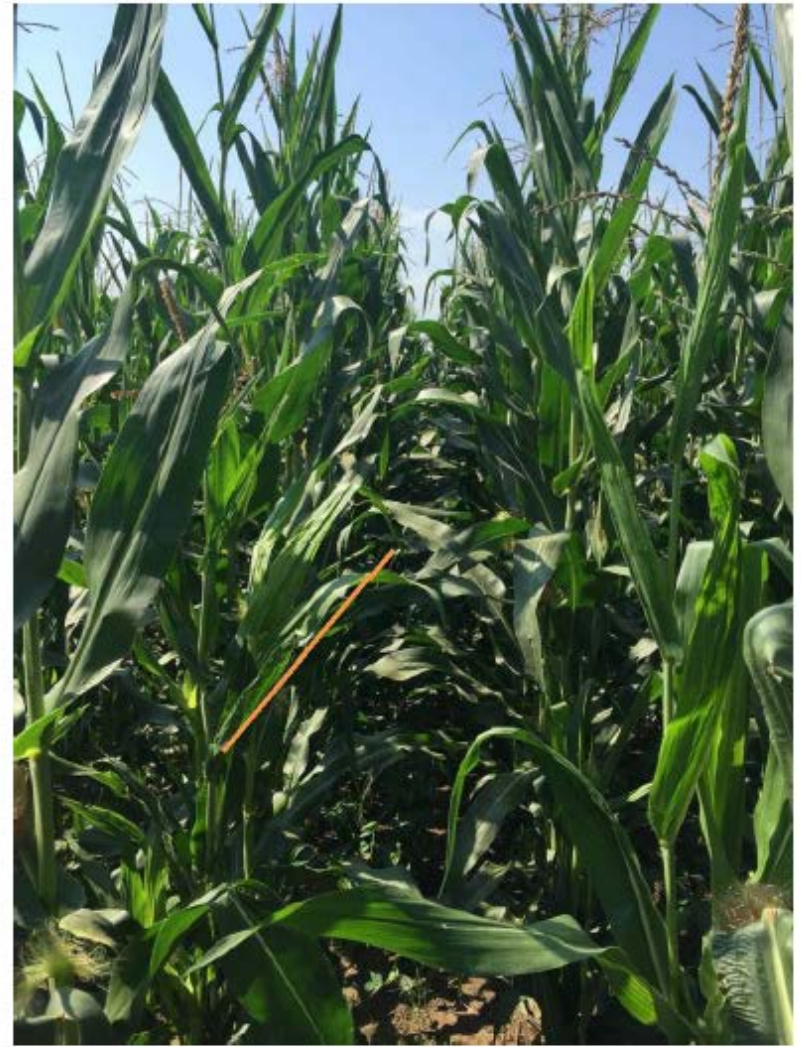


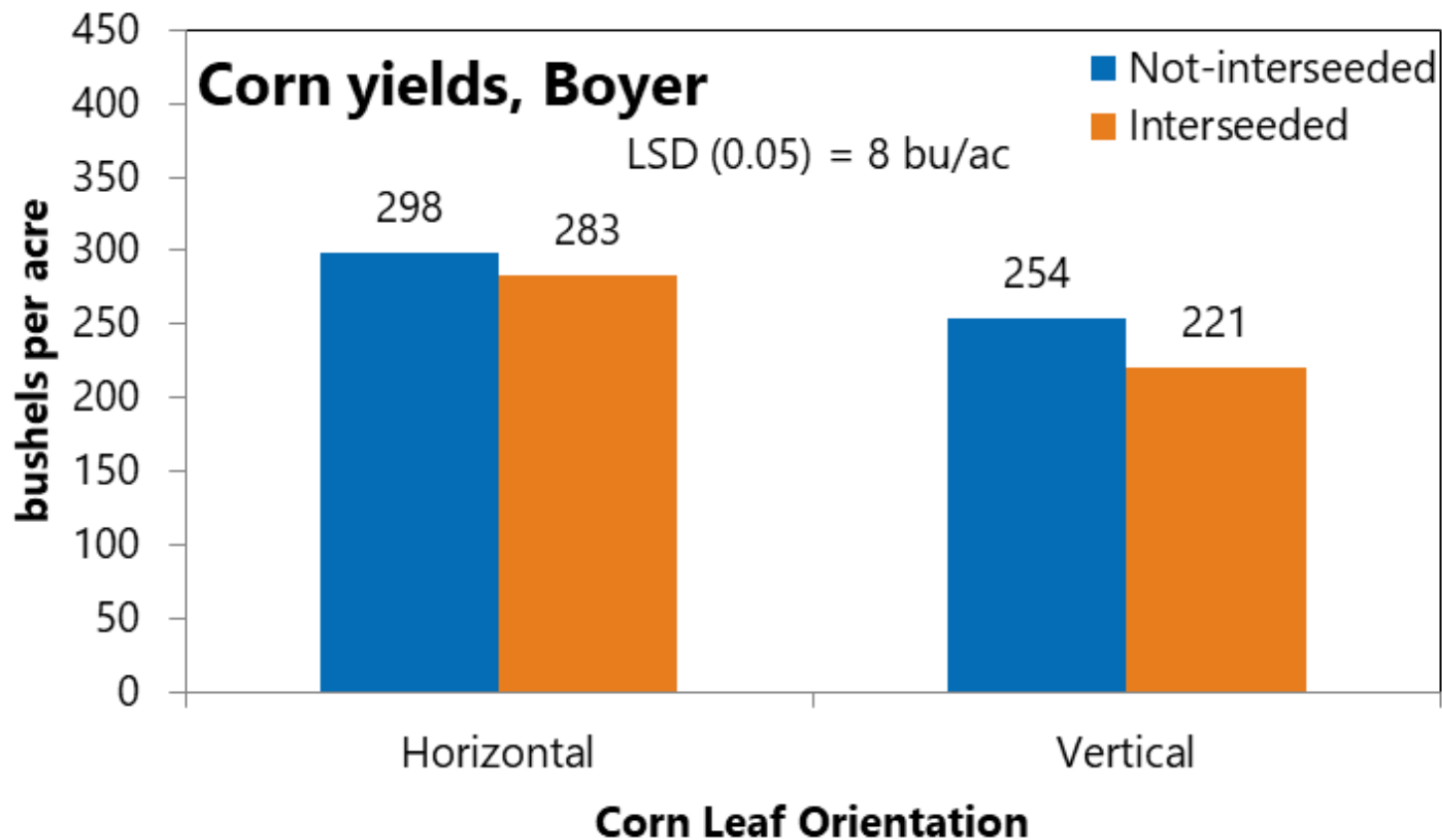
Figure 2 - Vertical Leaf Architecture

2017

Field Corn-Cover Crop Interseeding @ V4



Corn Yield Comparison





2017

Field Corn-Cover Crop Interseeding @ V4

- Conclusions:
 - Corn Leaf Architecture had no significant effect on biomass
 - Corn variety had significant effect on yield
 - Presence of Cover had negative effect on yield.
 - Species all survived (Cowpeas dominate)
 - No difference in light or ground temp between corn varieties

What's Next?

- Repeat test with larger trial?
- Try some new cover species?
- Try wider row spacing (60"?), with higher row population
- Looking for more species to survive & provide N during growing season

Questions?