



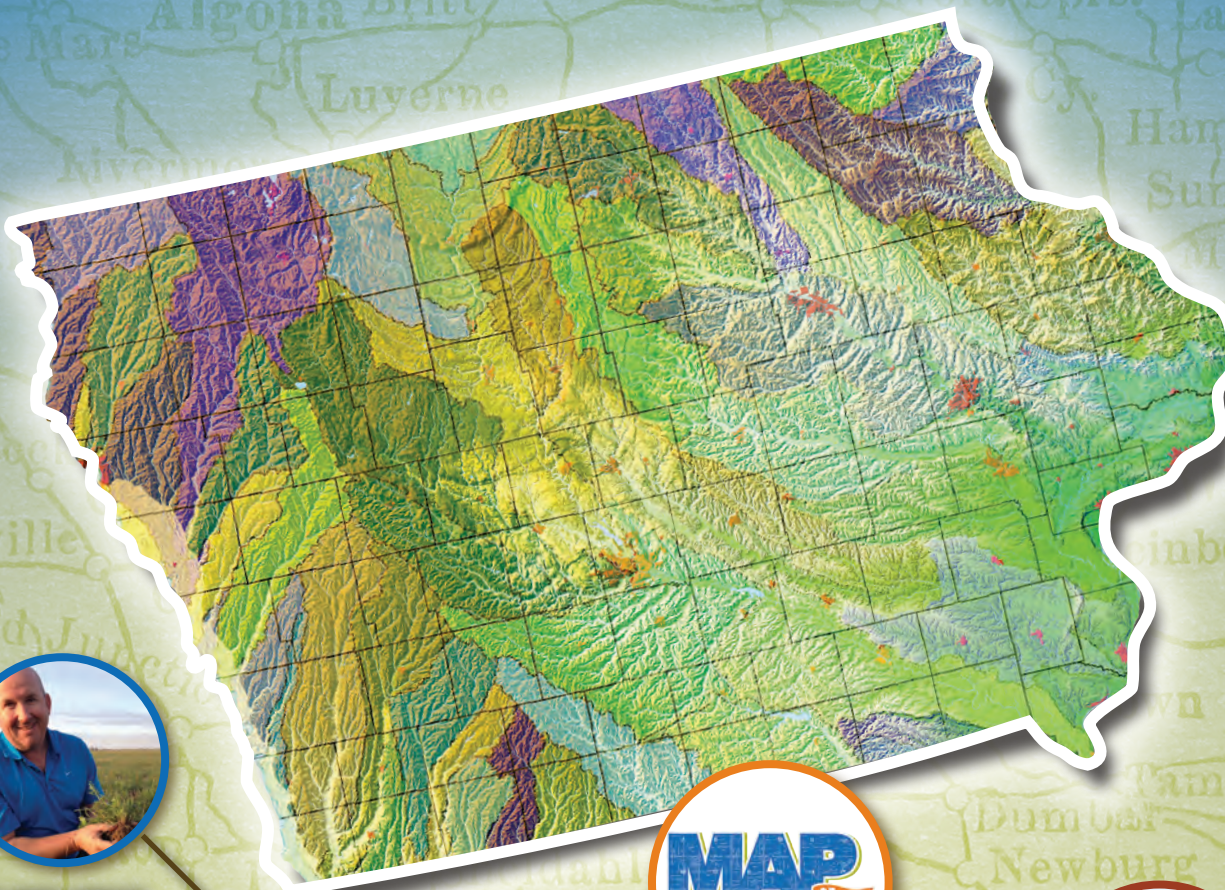
Practical Farmers of Iowa 2015 Annual Conference

MAPPING OUR FUTURE

Conference Program Guide

January 23-24, 2015

Iowa State Conference Center • Scheman Building • Ames • Iowa



BLAKE VINCE



**JIM & LEEANN
VANDERPOL**



**PAUL EHRHARDT
& KAY JENSEN**

WELCOME *to the* CONFERENCE!

Program Contents

Conference Schedule Overview	pg. 3
Map of Scheman Center	pg. 4
Sponsor & Exhibitor List and Contacts	pgs. 5-8
Sponsor & Exhibitor Location Map	pg. 9
Friday Schedule-at-a-Glance	pg. 10
Friday Schedule Details	pg. 11
Friday Workshop Descriptions.....	pg. 12
PFI Potluck Directions	pg. 13
Saturday Schedule-at-a-Glance	pg. 14
Saturday Schedule Details	pg. 15

Saturday Workshop Descriptions	pgs. 16-18
Speaker Details Alphabetically	pgs. 19-21
Blank Pages for Notes	pgs. 22-27



THANK YOU for Coming!

Where are we? Where do we want to go?

In this spot on Earth called Iowa, soil maps reveal some of the highest quality topsoils in the world. Rainfall charts and physical maps show plentiful water (usually) that others envy. But on other maps our fingers follow routes of unsustainable erosion levels from uncovered soil and tile lines. Still other maps show rapidly declining biodiversity.

We need to draw Iowa's map anew, so that – from the Mississippi to the Missouri – our state is filled with an agriculture that supports farms prized for their diversity of crops and livestock, food that is celebrated, and

communities alive with diverse connections between farmers and friends of farmers.

The 2015 Annual Conference will foster discussion on longer crop rotations, cover crops, pollinator habitat, weather resiliency, soil preservation, perennial crops, diverse crop mixes and irrigation. We will also explore how to tackle low profit margins and volatile market prices, and how to chart a profitable future. Learn from discussions between beginning farmers navigating future farming careers, and experienced farmers helping them reach their destinations through farm succession, mentorship and education. **So settle in and set your path!**

Wifi & Social Media

Looking to get online? Free wifi is available throughout Scheman on Iowa State University's guest wireless network. If you need assistance, ask at the registration desk.

Share the experience! Use **#PFI15** to post social media updates on Facebook and Twitter. Let's get a conversation going!

Please Fill out Your Conference Evaluation!

Your feedback is very important to us! This is YOUR conference, and we want to make sure we're planning an event that meets your needs and wants. We gather as a staff and read each and every evaluation we receive, so tell us what you think! What worked? What didn't work?

What sessions, speakers or exhibitors do you want to see next year – or in the future? Let us know! You can turn forms in at the registration desk or give it to a staff member at your last session.

Practical Farmers Staff & Board

Staff:

Erica Andorf
Sarah Carlson
Steve Carlson
Meghan Filbert
Stefan Gailans
Suzi Howk
Tamsyn Jones

Liz Kolbe
Drake Larsen
Nick Ohde
Teresa Opheim
Julie Wheelock
Sally Worley
Lauren Zastrow

Conference

Coordinator:
Kathy Eastman

Founders:

Larry Kallem
Dick Thompson
Sharon Thompson

Board:

Dan Wilson
Tim Landgraf
Jeff Klinge
Mark Peterson
Ann Cromwell
Melissa Dunham
Tyler Franzenburg

Ann Franzenburg
Wendy Johnson
Kurt Van Hulzen
Kathy Eckhouse
Gail Hickenbottom

Founded in 1985, Practical Farmers of Iowa is an open, supportive and diverse organization of farmers and friends of farmers that seeks to strengthen farms and communities through farmer-led investigation and information-sharing. Farmers in our network produce corn, soybeans, beef cattle, hay, fruits and vegetables, and more. For additional information, call (515) 232-5661 or visit <http://practicalfarmers.org>.

CONFERENCE SCHEDULE OVERVIEW

FRIDAY, JANUARY 23

11 a.m.	Exhibit Hall opens – (1st Floor) – <i>(See Sponsor Location map on pg. 9)</i> • <i>Beverages available in the Exhibit Hall.</i>
11 a.m. – 12:30 p.m.	Conference registration
12:30 p.m.	Silent Auction opens – (2nd Floor)
12:30 – 4:30 p.m.	In-Depth Workshops – <i>(7 sessions; see pg. 10 for locations, pg. 12 for descriptions)</i>
2 – 3 p.m.	Break to visit with sponsors and exhibitors in the Exhibit Hall • <i>(See Sponsor Location map on pg. 9)</i> • <i>Snacks available in the Exhibit Hall.</i>
4:30 – 4:45 p.m.	Break to visit with sponsors in the Exhibit Hall
4:45 – 5:15 p.m.	Practical Farmers Update – • <i>Hear the latest on Practical Farmers programming, finances, staffing and more.</i>
5:15 – 5:30 p.m.	PFI Sustainable Agriculture Achievement Award Presentation
5:30 – 6:30 p.m.	Play Performance – “Map of My Kingdom” • <i>Commissioned by Practical Farmers; written by playwright Mary Swander</i>
7 – 10 p.m.	PFI Potluck Party – CPMI Event Center • 2321 North Loop Drive • Ames • <i>(See pg. 13 for a map and directions)</i> • SPECIAL: Steve McGrew and Jon Bakehouse will open the potluck and help set the festive mood, performing together on saw and guitar. You won't want to miss it!

DO YOU HAVE PERISHABLE FOOD FOR THE POTLUCK?

Drop Your Goods at Scheman!

Did you bring food that needs to be refrigerated – or that you worry will freeze if left in your car? This year, we have a potluck food drop station at Scheman where you can take your perishable items.

Look for a sign and table set up on the ground floor of Scheman. Volunteers will make sure your items are

labeled, and PFI will take care of delivering your food to the CPMI Event Center.

Please remember that we don't have space for crockpots; only bring your perishable foods to the drop station.

*** THANK YOU** to Lonna Nachtigal and Donna Prizgintas for serving as potluck hosts! *



SATURDAY, JANUARY 24

7:30 – 8:45 a.m.	Registration and Breakfast Meetings – <i>(See list of breakfast sessions on pg. 15)</i>
8 a.m.	Exhibit Hall opens – (1st Floor) – <i>(See Sponsor Location map on pg. 9)</i> • <i>Beverages available in the Exhibit Hall.</i>
9 – 11 a.m.	Round I Workshops – <i>(8 sessions; see pg. 14 for locations, pgs. 16-17 for descriptions)</i>
11 – 11:30 a.m.	Break to visit with sponsors and exhibitors in the Exhibit Hall • <i>Snacks available in the Exhibit Hall.</i>
11:30 a.m. – 12:30 p.m.	Round II Workshops – <i>(7 sessions; see pg. 14 for locations, pgs. 16-17 for descriptions)</i>
12:45 – 1:45 p.m.	Lunch – Featuring foods from PFI members
1:45 – 3:15 p.m.	Round III Workshops – <i>(7 sessions; see pg. 14 for locations, pgs. 16-17 for descriptions)</i>
3:15 – 3:30 p.m.	Break • <i>Snacks available in the Exhibit Hall.</i>
3:30 p.m.	Silent Auction closes
3:30 – 4:30 p.m.	Round IV – Workshops: U-Pick – <i>(8 sessions; see pg. 14 for locations)</i>

GROUND FLOOR

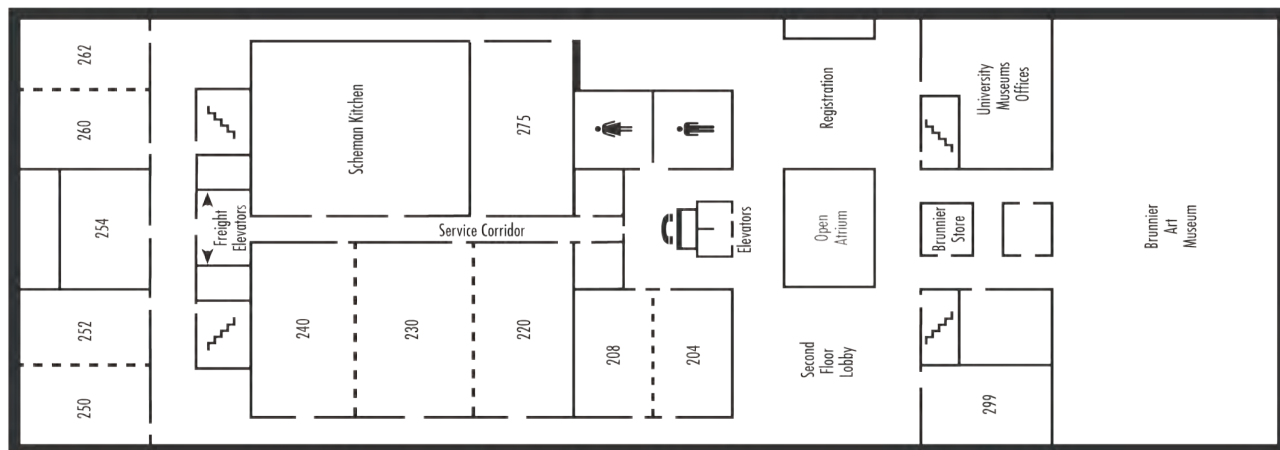
Conference Room 004
Board Suite 080
Conference Room 088
Conference Room 098

FIRST FLOOR

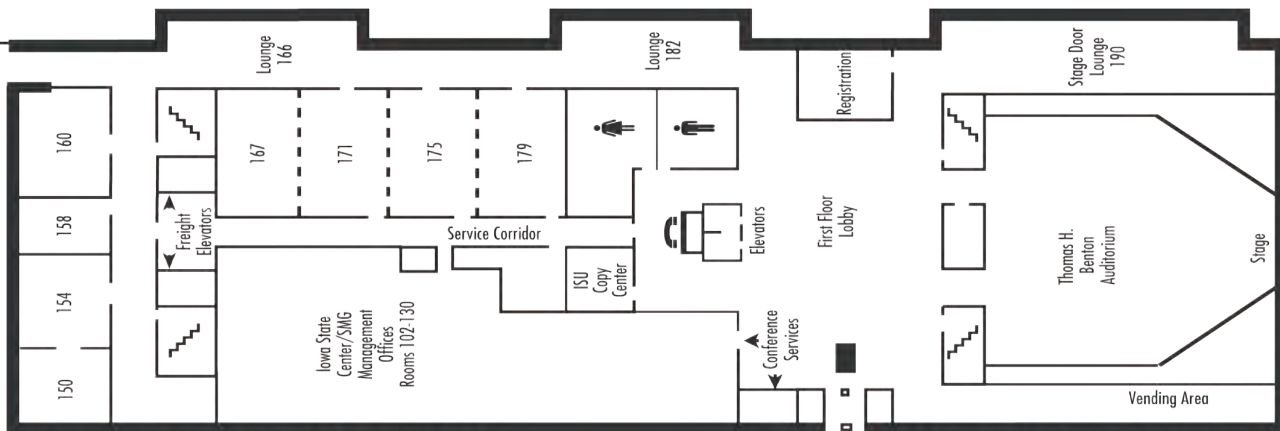
Thomas H. Benton Auditorium
Conference Rooms 150 - 179
Stage Door Lounge
Iowa State Center/SMG Management Office
Event and Conference Services
ISU Copy Center

SECOND FLOOR

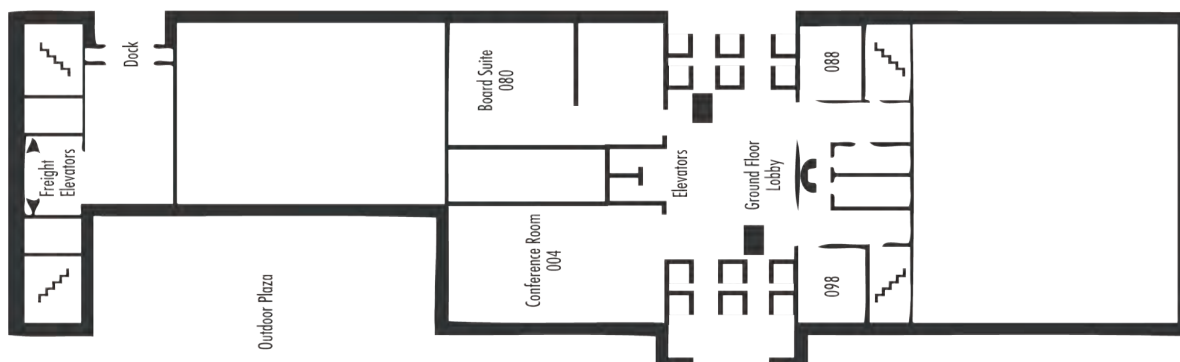
Conference Rooms 204 - 299
Brunner Art Museum and Store
University Museums Offices



Second Floor



First Floor



Ground Floor

~ SPONSORS & EXHIBITORS ~

Thank You!

See a sponsor or exhibitor in the list below that you'd like to meet? Use the sponsor location map on pg. 9 to help you more quickly find the groups you're interested in visiting (**Note:** Sponsors with an asterisk * by their names do not have a staffed table in the Exhibit Hall). Help us thank the sponsors and exhibitors whose generous support has made this conference possible!

LEVEL A SPONSORS

Albert Lea Seed

Albert Lea, Minnesota
Jim Wichmann
www.alseed.com
(507) 373-3161
jim@alseed.com

Applegate Natural & Organic Meat *

Bridgewater, New Jersey
Gina Asoudegan
www.applegate.com
(215) 431-4932
gina@applegate.com

Calcium Products

Ames, Iowa
Craig Dick
www.calciumproducts.com
(515) 864-7335
craig@calciumproducts.com

eMerge Genetics

West Des Moines, Iowa
Wayne Hoener
www.emergegenetics.com
(515) 314-1003
whoener@schillgen.com

Iowa Learning Farms

Ames, Iowa
Carol Brown
www.extension.iastate.edu/ilf
(515) 294-8912
cbrown1@iastate.edu

Iowa SARE

Ames, Iowa
Linda Naeve
www.northcentralsare.org
(515) 294-8946
lnaeve@iastate.edu

ISU Agronomy Department / Graduate Program in Sustainable Agriculture

Ames, Iowa
Mary Wiedenhoeft
www.agron.iastate.edu and
www.sust.ag.iastate.edu/gpsa
(515) 294-3274
mwiedenh@iastate.edu

Sustainable Farm Partners

Santa Fe, New Mexico
Harn Soper
www.SustainableFarmPartners.com
(650) 804-0198
Harn@SustainableFarmPartners.com

USDA-NRCS

Des Moines, Iowa
Laura Crowell
www.ia.nrcs.usda.gov
(515) 323-2207
laura.crowell@ia.usda.gov

WeedGuardPlus

Aurora, Colorado
Mike Gallagher
www.weedguardplus.com
(720) 427-3417
mgallagher@sunshinepaper.com

LEVEL B SPONSORS

Grain Millers, Inc.

Eden Prairie, Minnesota
Sam Raser
www.grainmillers.com
(952) 983-1311
sam.raser@grainmillers.com

Great Lakes Organic Feedmill (Herbrucks)

Saranac, Michigan
Dan Bewersdorff
www.herbrucks.com
(616) 902-8623
dbewersdorff@herbrucks.com

Henry A. Wallace Chair for Sustainable Agriculture *

Ames, Iowa
Matt Liebman
www.wallacechair.iastate.edu
(515) 294-7486
mliebman@iastate.edu

Iowa Farm Bureau Federation *

West Des Moines, Iowa
Dana Ardary
www.iowafarmbureau.com
(515) 225-5456
dardary@ifbf.org

Iowa State University Extension

Ames, Iowa
John Lawrence
www.extension.iastate.edu/bfc
(515) 294-7801
jdlaw@iastate.edu

ISURF / CAD

Ames, Iowa
Julie JG Minot
www.cad.iastate.edu
(515) 294-9442
jjgus@iastate.edu

Leopold Center for Sustainable Agriculture

Ames, Iowa
Laura Miller
www.leopold.iastate.edu
(515) 294-5272
lwmler@iastate.edu

Midwest Insurance Corp.

Nevada, Iowa
Nikki Ball
www.midwestins.com
(515) 382-3541
nball@midwestins.com

Niman Ranch Pork Division

Latimer, Iowa
Phil Kramer
www.nimanranch.com
(515) 290-8636
philip.kramer@nimanranch.com

(Continued on page 6 →)

~ SPONSORS & EXHIBITORS ~ *Thank You!*

Organic Valley / Organic Prairie

La Farge, Wisconsin
Joe Klein
www.organicvalley.coop
(608) 778-8811
joe.klein@organicvalley.coop

Pro-Soil

Alburnett, Iowa
Wayne Volkl
www.Pro-Soil.com
(319) 329-9720
Hitaga@fmtcs.com

USDA-Farm Service Agency

Urbandale, Iowa
John Whitaker
www.fsa.usda.gov
(515) 331-8480
john.whitaker@ia.usda.gov

LEVEL C SPONSORS

Blue River Hybrids

Kelley, Iowa
Maury Johnson
www.blueriverorgseed.com
(800) 370-7979
info@blueriverorgseed.com

Gateway Market *

Des Moines, Iowa
Adam Bartelt
www.gatewaymarket.com
(515) 331-1753, ext. 1006
abartelt@ohospitality.com

Iowa's Center for Ag Safety and Health

Iowa City, Iowa
Ralph Altmaier
http://cph.uiowa.edu/icash/
(319) 335-4229
ralph-altmaier@uiowa.edu

Iowa Energy Alternatives

New Sharon, Iowa
Todd Hammen
www.iowaenergyalternatives.com
(641) 623-9463
iowaenergyalternatives@yahoo.com

National Center for Appropriate Technology

Des Moines, Iowa
Ann Robinson
www.ncat.org/midwest
(479) 587-3474
annr@ncat.org

Pew – Human Health & Industrial Farming

Washington D.C.
Joshua Wenderoff
www.saveantibiotics.org
(202) 540-6542
jwenderoff@pewtrusts.org

Principal Financial Group

West Des Moines, Iowa
Jolena Irving
www.principal.com
(515) 246-4943
irving.jolena@principal.com

Riverside Feeds, LLC

Elma, Iowa
James Frantzen
www.riversidefeeds.net
(641) 257-8122
jfrantzen06@gmail.com

LEVEL D SPONSORS

Agnition

Solon, Iowa
Brad Klukas
www.agnition.com
(507) 337-6954
Brad.Klukas@ralcoagriculture.com

Allamakee SWCD

Waukon, Iowa
Sara Berges
www.allamakeeswcd.org
(563) 568-2246, ext. 3
sara.berges@ia.nacdn.net

BFG Supply Company

Burton, Ohio
Linda Schinness
www.bfgsupply.com
(440) 498-8337
lschinness@bfgsupply.com

BlueStem Organic Feedmill

Webster City, Iowa
Cindy McCollough
www.BlueStemOrganic.com
(515) 832-2992
Cindy@BlueStemOrganic.com

Community Foundation of Greater Des Moines

Des Moines, Iowa
Sara Bonney
www.desmoinesfoundation.org
(515) 710-2868
bonney@desmoinesfoundation.org

Conklin Products

Malcom, Iowa
Kent Winburn
(641) 990-6591
kentwinburn4@hotmail.com

Cowsmo

Cochrane, Wisconsin
John Rosenow
www.cowsmocompost.com
(608) 626-2571
jrosenow@mwt.net

Farm Credit Services of America *

Perry, Iowa
Teresa Davenport
www.fcsamerica.com
(515) 465-5673, ext. 16023
teresa.davenport@fcsamerica.com

Frommelt Ag Service

Greeley, Iowa
Terry Frommelt
(563) 925-2270
frommeltag@iowatelecom.net

Genetic Enterprises International

Johnston, Iowa
Alix Paez
(515) 865-8834
paezgei@mchsi.com

Grassland Oregon

Salem, Oregon
Brent Jones
www.grasslandoregon.com
(503) 302-7538
BrentJones@grasslandoregon.com

(Continued on next page →)

~ SPONSORS & EXHIBITORS ~ *Thank You!*

Green Cover Seed

Bladen, Nebraska
Colten Catterton
www.greencoverseed.com
(402) 984-1631
colten@greencoverseed.com

Green Light Renewable Services

Des Moines, Iowa
Tim Kruse
www.greenlightrenew.com
(515) 250-4268
greenlightrenew@gmail.com

Humane Society of the U.S.

Clear Lake, Iowa
Chris C. Petersen
www.humanesociety.org
(641) 425-8760
cpetersn@netins.net

Iowa Agricultural Development Division

Des Moines, Iowa
Steve Ferguson
www.iowaFinanceAuthority.gov/IADD
(515) 725-4928
steve.ferguson@iowa.gov

Iowa Beef Center

Ames, Iowa
Dan Loy
www.iowabeefcenter.org
(515) 294-BEEF
beefcenter@iastate.edu

Iowa Central Community College Agriculture

Fort Dodge, Iowa
Mike Robertson
www.iowacentral.edu
(515) 574-1943
robertson@iowacentral.edu

Iowa Environmental Council

Des Moines, Iowa
Katy Heggen
www.iaenvironment.org
(515) 244-1194, ext. 210
heggen@iaenvironment.org

Iowa Farmers Union

Des Moines, Iowa
Deborah Bunka
www.iowafarmersunion.org
(515) 451-8492
dbunka@iowafarmersunion.org

Iowa Forage and Grassland Council

Des Moines, Iowa
Joan O'Brien
http://iowaforage.org
(515) 262-8323
joano@agribiz.org

Iowa Nut Growers Association

Lone Rock, Iowa
Jeff Jensen
http://iowanutgrowers.com
(515) 320-6756
jjensen@treesforever.org

Iowa Organic Association

Ames, Iowa
Roger Lansink
www.iowaorganic.org
(712) 369-1287
roger63@outlook.com

Iowa Waste Reduction Center

Cedar Falls, Iowa
Dan Nickey
www.iwrc.org
(319) 273-6588
daniel.nickey@uni.edu

Iowa Water Center

Ames, Iowa
Melissa Miller
www.water.iastate.edu
(515) 294-7467
millerms@iastate.edu

Johnny's Selected Seeds

Winslow, Maine
Randy Cummings
www.johnnyseeds.com
(207) 465-6671
rcummings@johnnyseeds.com

La Crosse Seed

Ankeny, Iowa
Bert Strayer
www.laxseed.com
(319) 240-0561
bstrayer@laxseed.com

MOSA Organic Certification

Viroqua, Wisconsin
Joe Pedretti
www.mosaorganic.org
(608) 637-2526
mosa@mosaorganic.org

MSU Organic Farmer Training Program

East Lansing, Michigan
Denae Friedheim
www.msuorganicfarm.org
(517) 230-7987
msufarm@msu.edu

Nuest, Inc.

Monticello, Indiana
Len Nuest
www.Humusolver.com
(574) 581-1989
lnuest@embarqmail.com

Prairie Creek Seed

Cascade, Iowa
Karl Dallefeld
www.prairiecreekseed.com
(877) 754-4019
info@prairiecreekseed.com

Prairie Rivers of Iowa

Ames, Iowa
Penny Brown Huber
www.prrcd.org
(515) 232-0048
pbrownhuber@prrrcd.org

ProfitPro, LLC

Albert Lea, Minnesota
Faye Rudsenske
www.profitproag.com
(507) 373-2550
frudsenske@profitproag.com

Red Fern Farm

Wapello, Iowa
Tom Wahl
www.redfernfarm.com
(319) 212-0877
tom@redfernfarm.com

Renewable Farming LLC

Cedar Falls, Iowa
Jerry Carlson
www.renewablefarming.com
(319) 240-4547
jerry@renewablefarming.com

RIGGAN AG / Green World Path

Oxford, Iowa
Matthew Riggan
www.greenworldpath.com
(319) 530-4287
mattriggan@gmail.com

(Continued on page 8 →)

~ SPONSORS & EXHIBITORS ~ *Thank You!*

Stonebridge Ltd.

Cedar Falls, Iowa
Pamela Ryan
www.stonebridgeltd.org
(319) 277-4277
pamela@stonebridgeltd.org

Sunopta

Hope, Minnesota
Laverne Klecker
www.sunopta.com
(507) 451-4724
laverne.klecker@sunopta.com

Sustane Natural Fertilizer

Cannon Falls, Minnesota
Kyle Lilly
www.sustane.com
(507) 263-3003
kylel@sustane.com

Town & Country Insurance, representing Hastings Mutual Insurance Company

Webster City, Iowa
Doug Follman
www.TCins.com
(515) 832-3787
DFollmann@TCins.com

Trees Forever

Marion, Iowa
Jeff Jensen
www.treesforever.org
(515) 320-6756
jjensen@treesforever.org

USDA National Agricultural Statistics Service

Des Moines, Iowa
Greg Thessen
www.nass.usda.gov
(515) 284-4340
nassfoumr@nass.usda.gov

Winneshiek Energy District

Decorah, Iowa
Kayla Koether
www.energydistrict.org
(563) 382-4207
Kayla@energydistrict.org

LEVEL E SPONSORS

(Note: These sponsors have no individual tables, but look for materials from many of them in the Exhibit Hall.)

American Organic Seed *

Warren, Illinois
Rebecca Sidor
www.american-organic.com
(855) 945-2449
rebecca@gristmillinc.com

Four Seasons Tools *

Independence, Missouri
Maureen Branstetter
www.smallfarmtools.com
(816) 444-7330
office@smallfarmtools.com

Self Help International *

Waverly, Iowa
Nora Tobin
www.selfhelpinternational.org
(319) 352-4040
nora.selfhelp@gmail.com

Story County Soil and Water Conservation District *

Nevada, Iowa
Mark Tjelmeland
(515) 434-2440
tjfarm@iowatelecom.net

The Organic & Non-GMO Report *

Fairfield, Iowa
Kim LaVoie
www.non-gmoreport.com
(641) 209-3426
kim@non-gmoreport.com

Wallaces Farmer *

Urbandale, Iowa
Rod Swoboda
www.wallacesfarmer.com
(515) 505-1543
rswoboda@farmprogress.com

Welter Seed and Honey Company *

Onslow, Iowa
Karen Knepper
www.welterseed.com
(800) 470-3325
info@welterseed.com

Wheatsfield Cooperative *

Ames, Iowa
www.wheatsfield.coop
(515) 232-4094

Thank You
~ TO OUR LEVEL B
SPONSORS ~



GRAIN MILLERS



IOWA STATE UNIVERSITY
Extension and Outreach

mic
MIDWEST INSURANCE CORPORATION

We've got it covered.



WALLACE CHAIR
for Sustainable Agriculture

IOWA STATE
UNIVERSITY
Iowa State University
Research Foundation

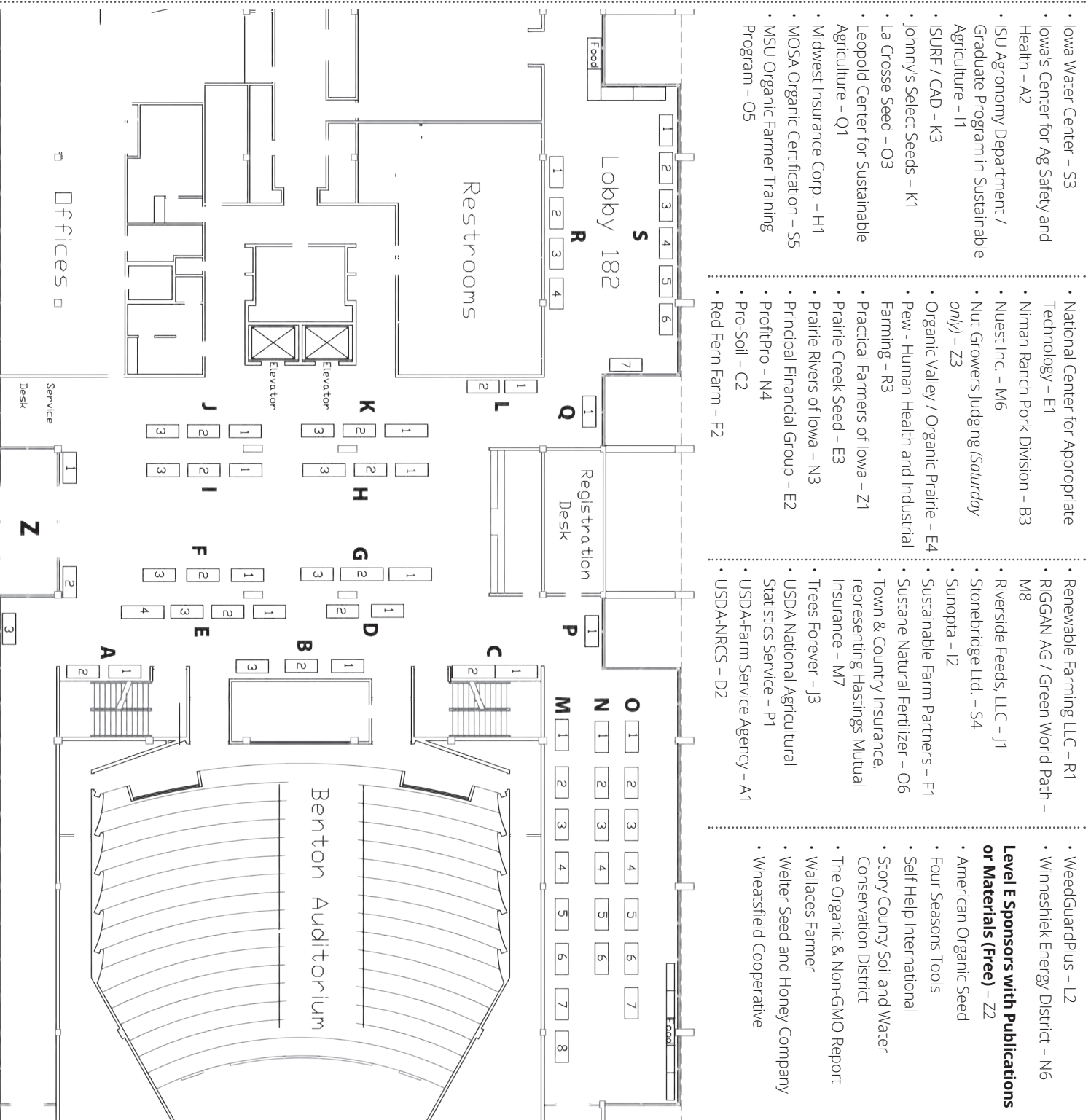
USDA
Farm Service
Agency



CROPP COOPERATIVE
organic and farmer-owned since 1988

SPONSOR & EXHIBITOR ~ LOCATION MAP

- Agrition - O1
- Albert Lea Seed - G2
- Allamakee SWCD - M1
- BFG Supply Company - N1
- Blue River Hybrids - D1
- Bluestem Organic Feed Mill - G3
- Calcium Products - G1
- Conklin Products - M2
- Community Foundation of Greater Des Moines - O7
- Cowsmo - S6
- eMerge Genetics - L1
- Frommelt Ag Service - K2
- Genetic Enterprises International - F3
- Grain Millers, Inc. - H2
- Grassland Oregon - M3
- Great Lakes Organic Feed Mill - S7
- Green Cover Seed - S1
- Green Light Renewable Services - H3
- Humane Society of the U.S. - M5
- Iowa Agricultural Development Division - N5
- Iowa Beef Center - O2
- Iowa Central Community College Agriculture - S2
- Iowa Energy Alternatives - R4
- Iowa Environmental Council - N2
- Iowa Farmers Union - M4
- Iowa Forage and Grassland Council - O4
- Iowa Learning Farms - C1
- Iowa Nut Growers Association - I3
- Iowa Organic Association - R2
- Iowa SARE - B1
- Iowa State University Extension - B2
- Iowa Waste Reduction Center - J2



Friday Schedule-at-a-Glance

ROOM ASSIGNMENTS									
TIME		ACTIVITY	004	150-154	167-179	BENTON AUDITORIUM	250-252	260-262	275
11 a.m.		Exhibit Hall Opens <i>(1st Floor)</i>							
11 a.m. - 12:30 p.m.		Conference Registration							
12:30 p.m.		Silent Auction Opens <i>(2nd Floor)</i>							
12:30 - 2 p.m.		Workshops	Nose-to-Tail Cooking and Dining	Up on the Rooftop: Energy Conservation and Solar PV	Multi-Species Grazing with Cows and Pigs	Get the Dirt on Soil Ecology	Crop and Market Diversity for a Profitable Farm	Beginning Organic: Transitioning, Certifying and Q&A	Cards on the Table: Putting Farm Financial Statements in Context
2-3 p.m.		Break to Meet with Sponsors & Exhibitors							
3-4:30 p.m.		Workshops Continue							
4:15-4:45 p.m.		Break	Snacks are available in the Exhibit Hall.						
4:45-5:30 p.m.		Practical Farmers Update				Practical Farmers Update			
5:15-5:30 p.m.		PFI Sustainable Agriculture Achievement Award Presentation							
5:30-6:30 p.m.		Play Performance: "MAP OF MY KINGDOM"				Play Performance: "MAP OF MY KINGDOM"			
7-10 p.m.		Potluck Party at CPMI Event Center							

ROOM LOCATIONS			
004 -	Ground Level	Benton Auditorium -	1st Floor
150-179 -	1st Floor	250-275 -	2nd Floor

FRIDAY, JANUARY 23

11 a.m.	Exhibit Hall opens – (1st Floor) – (See Sponsor Location map on pg. 9) <ul style="list-style-type: none">• Beverages available in the Exhibit Hall.
11 a.m. – 12:30 p.m.	Conference registration
12:30 p.m.	Silent Auction opens – (2nd Floor) <i>Bid on farm-raised products, books, crafts – and more! – and help support Practical Farmers of Iowa!</i>
12:30 – 4:30 p.m.	In-Depth Workshops – (See schedule grid for room assignments; workshop descriptions are on pg. 12) <ul style="list-style-type: none">• GET THE DIRT ON SOIL ECOLOGY• BEGINNING ORGANIC: TRANSITIONING, CERTIFYING AND Q&A• MULTI-SPECIES GRAZING WITH COWS AND PIGS• CARDS ON THE TABLE: PUTTING FARM FINANCIAL STATEMENTS IN CONTEXT• CROP AND MARKET DIVERSITY FOR A PROFITABLE FARM• NOSE-TO-TAIL COOKING AND DINING• UP ON THE ROOFTOP: ENERGY CONSERVATION AND SOLAR PV
2 – 3 p.m.	Break to visit with sponsors and exhibitors in the Exhibit Hall <ul style="list-style-type: none">• (See Sponsor & Exhibitor Location Map on pg. 9)• Snacks available in the Exhibit Hall
4:30 – 4:45 p.m.	Break to visit with sponsors in the Exhibit Hall
4:45 – 5:30 p.m.	Practical Farmers Update – <ul style="list-style-type: none">• Hear the latest on Practical Farmers programming, finances, staffing and more.• PFI Sustainable Agriculture Achievement Award presentation
5:30 – 6:30 p.m.	Play Performance – “Map of My Kingdom” <ul style="list-style-type: none">• Commissioned by Practical Farmers; written by playwright Mary Swander <p><i>Fifty-six percent of Iowa farmland is owned by people over the age of 65, according to a report by retired Iowa State University economist Mike Duffy, “Farmland Ownership and Tenure Report in Iowa 2012.” Thirty percent of Iowa farmland is owned by those more than 75 years old.</i></p> <p><i>Who’s going to get the farm? And what are they going to do with it? Will your future plans for your land create harmony or strife for your family? Or have you even started to think that far ahead? “Map of My Kingdom,” a play commissioned by Practical Farmers of Iowa and written by Iowa’s Mary Swander, tackles the critical issue of land transition. In the play, Angela Martin, a lawyer and mediator in land transition disputes, shares stories of how farmers and landowners she has worked with over the years approached their land successions. Some families almost came to blows, struggling to resolve the sale or transfer of their land, dissolving relationships. Others found peacefully rational solutions that focused not only on the viability of the family, but also of the land.</i></p>
7 – 10 p.m.	PFI Potluck Party – CPMI Event Center • 2321 North Loop Drive • Ames <ul style="list-style-type: none">• (See pg. 13 for a map and directions) • SPECIAL: Steve McGrew and Jon Bakehouse on saw and guitar!

DON'T MISS

MEMBER POSTERS

Member posters are a tradition at our annual conference! Check out posters shared by fellow conference-goers. Topics can range from details about people's farms, to on-farm research and demonstration project discoveries, to lessons learned.

SILENT AUCTION ITEMS

Find unique, fun, practical or unexpected goods to take home! Items may include baked goods, farm-raised products, hand-crafted items, books, farm supplies and more. **Consider placing a bid – and help support our Next Generation work!**

MEMBER PHOTO DISPLAY

This conference features a special photo display of PFI members' farms, acreages, gardens and more submitted by conference attendees. See what fellow farmers and friends of farmers, landowners and local food lovers feel defines their unique experiences. From equipment and fields to family and pets, landscapes and livestock to food and fun, learn about the diversity of Practical Farmers members in this special 2015 conference pictorial display!

FRIDAY WORKSHOP DETAILS

— Get the Dirt on Soil Ecology

Can you tell if soil is healthy by looking at it? To understand soil, we need to look beyond surface features and dig deeper. In this session, we'll explore soil health from above and below. Learn from Jill Clapperton about the science of soil as habitat, managing soil health from this vantage, and how the results of on-farm research can lead to improved environmental and food quality. Then hear farmer Blake Vince's perspective on how cover crops can improve soil health, and what he believes is the biggest barrier to adding cover crops: fear of change.

JILL CLAPPERTON is principal scientist at and co-founder of Rhizoterra Inc., and a well-known international lecturer and advocate for practices promoting soil health. Jill was the rhizosphere ecologist for 16 years at Agriculture and Agri-Food Canada's Lethbridge Research Centre in Lethbridge, Alberta.

BLAKE VINCE is a fifth-generation farmer who raises corn, soybeans, winter wheat and cover crops near Merlin, Ontario. He is also director of the Innovative Farmers Association of Ontario.

— Beginning Organic: Transitioning, Certifying and Q&A

Have you considered transitioning to organic but don't know where to start? This session is for you! Hear panelists from both sides of the process share transition stories and expertise; then get your questions answered on starting an organic rotation, agronomic aspects, crops to grow in transition years, inputs, breaking CRP land, starting with row-cropped land and more!

SCOTT SHRIVER grows organic corn, soybeans and wheat near Jefferson in Greene County. **MORGAN HOENIG** grows organic vegetables on her 3-plus-acre farm, Mogo Organic, which she started near Mount Pleasant in 2008. **JACK KNIGHT** has decades of experience evaluating and inspecting transitioning farms as an organic inspector with the International Organic Inspectors Association. **JOE LALLY** is a certified crop adviser and independent technical service provider in Denison; he has experience with organic transition plans.

— Multi-Species Grazing with Cows and Pigs

Grazing different species together can have multiple benefits, from pest control to better animal performance. It's more common to see ruminants mixed together – but adding a non-ruminant like pigs can have unique benefits. Learn from Jim VanDerPol how grazing cattle and brood sows on the same pastures can cut bloat risk, control flies and lead to more pound of animal per acre grazed. Jim will also cover some tools needed and the economics of feeding sows when they have access to pastures.

JIM VANDERPOL grew up on his family farm near Kerkhoven, Minnesota. He and his wife have farmed there since 1977, and currently farm in partnership with their son, daughter-in-law and grandchildren. The farm is home to a hog farrow-to-finish operation as well as free-range chickens and a seasonal cattle grazing business.

— Cards on the Table: Putting Farm Financial Statements in Context

Learn how different farmers have created plans for success. Presenters Melissa Dunham and Craig Chase will analyze and discuss three years of financial data from several PFI members' farms. The farmers will participate in the discussion, providing context to the documents and explaining details, from financial decision-making to farm business goals.

MELISSA DUNHAM runs Grinnell Heritage Farm, an 80-acre certified organic vegetable farm in Grinnell, with her husband, Andy. She has an accounting degree. **CRAIG CHASE** leads the Marketing and Food Systems Initiative Research Program at the Leopold Center. He has 27 years of experience in extension programs as a farm management specialist focusing on applied economics, food crops, niche markets and alternative agricultural enterprises.

— Crop and Market Diversity for a Profitable Farm

Imagine this scenario: a farm so diverse it raises 1,000 different types of fruits and vegetables – 240 varieties of apples and pears, 80 varieties of tomatoes, 25 types of melon and more – and successfully markets to 30 high-end restaurants, 16 farmers markets and 26 CSA drop sites. Unrealistic vision? Not for Todd Nichols and his family. Hear how they use crop and market diversity to stay successful in a competitive environment – and get inspired to start on your own path to market diversification.

TODD NICHOLS manages his family's 400-acre fruit and vegetable farm. Nichols Farm serves farmers markets, restaurants and CSA members in the Chicago area. The farm was started in 1978 as a 3-acre hobby farm, and has grown into a successful family business with three generations working on the farm.

— Nose-to-Tail Cooking and Dining

Have you ever wondered what to do with unusual cuts of meat you receive in a meat bundle? Don't miss out on great culinary opportunities! Learn the best ways to use the whole animal from Story City Locker owners Ty and Bobbie Gustafson; their chef, Brian Malone; Brett McClavy, head cheesemonger and manager of The Cheese Shop; and farmer Ethan Book. The presenters will share tips, recipes – and of course, delicious samples!

TY and BOBBIE GUSTAFSON opened Story City Locker in 2012. Chef Brian Malone joined the Gustafsons soon thereafter, bringing his strong interest in crafting artisan sausages and cured meats. **ETHAN AND REBECCA BOOK** own and operate Crooked Gap Farm in Knoxville, where they raise pastured pork, beef, lamb, poultry and rabbits. **CHEF BRETT MCCLAVY** is the head cheesemonger and manager at The Cheese Shop of Des Moines.

— Up on the Rooftop: Energy Conservation and Solar PV

In this two-part session, PFI farmers partner with energy professionals to discuss energy conservation projects and solar PV on their farms. Martha McFarland and Ashley Craft will discuss the energy audit and weatherization project on Martha's house and chicken coop. Ashley will also discuss common issues seen in older homes, and the best materials and practices for energy conservation. After the break, Tim Landgraf and his solar installer Steven Guyer will discuss the financing, planning and installation process for PV.

MARTHA MCFARLAND manages Hawkeye Buffalo Ranch, near Fredericksburg, with her father, Dan. **ASHLEY CRAFT** is the program director for Green Iowa AmeriCorps, based at the University of Northern Iowa (UNI). **TIM LANDGRAF** runs One Step at a Time Gardens, a CSA farm in Kanawha, with his wife, Jan Libbey. **STEVEN GUYER** is president and founder of GWA International LLC. He is a NABCEP-certified solar PV installer who has designed more than 60 solar PV systems across Iowa. His project experience includes numerous livestock farms, commercial entities and residences.

PFI POTLUCK

7-10 p.m. -- Please bring food and / or drinks to share.

Note: There are limited outlets for crockpots, but refrigeration will be available starting Friday morning.

CPMI Event Center
2321 NORTH LOOP DRIVE
Just a few blocks from the Best Western!



From Scheman:

Head South on University Blvd.

Turn LEFT onto Airport Rd.

Turn LEFT onto North Loop Drive,
then RIGHT toward parking.



DRIVING FROM SCHEMAN:
LOOK FOR THE GLOWING SIGNS!



WALKING ROUTE FROM
THE BEST WESTERN



THANK YOU TO:
Niman Ranch for donating
bratwurst.

Saturday Schedule-at-a-Glance

ROOM ASSIGNMENTS										
TIME		ACTIVITY	004	150-154	167-179	BENTON AUDITORIUM		254	260-262	275
8 a.m.	Exhibit Hall Opens <i>(1st Floor)</i>									
7:30 - 8:45 a.m.	Registration and Breakfast Meetings	Breakfast meetings are on the 2nd Floor (in the lobby).								
9 - 11 a.m.	Round I Workshops	Growing and Marketing Non-GMO Crops	Iowa Farms in a Changing Climate	Recipe for Success: Making Quality Compost	Recordkeeping Analysis Platforms for Crop and Livestock Farmers	Housing for All (Species): Livestock Facility Options and Designs	Innovative Landowner-Farmer Partnerships	In-Field Practices for Organic Vegetable Production	Real-Life Business Plan Vetting	
11 - 11:30 a.m.	Break to Meet with Sponsors & Exhibitors	Snacks are available in the Exhibit Hall.								
11:30 a.m. - 12:30 p.m.	Round II Workshops	He's a Rebel: Grazing Management for Resiliency	Working Together to Reduce Drift	"Map of My Kingdom": Follow-Up Discussion	Rotations and Diversity – How to Shake It Up	What's the Deal with Cover Crops and Livestock and Herbicides?		Tangled Up in Drift Tape: Irrigation Set-Up and Strategy for Vegetable Crops	Back to Our Roots: Re-Establishing On-Farm Prairie for Multiple Farm Goals	
12:45 - 1:45 p.m.	Lunch <i>(Featuring foods from PFI members)</i>	Lunch is on the 2nd Floor. <i>(Note: The buffet is set up in the lobby, but seating is in Rm. 204-240)</i>								
1:45 - 3:15 p.m.	Round III Workshops	An Iowa Perspective on Cover Crop Species	Farm Transfer with Farming and Non-Farming Heirs	Niche Pork Marketing	Taking a Global View of Farmland Conservation and Biodiversity	The Right Tool for the Right Job ... And for You!		Don't Give It Away! Vegetable Pricing and Philosophy	Walk-In Cooler Construction and Efficiency	
3:15 - 3:30 p.m.	Break	Snacks available in the Exhibit Hall.								
3:30 p.m.	Silent Auction closes									
3:30 - 4:30 p.m.	Round IV Workshops: U-Pick	Grazier Gear Show-and-Tell: Equipment to Make Grazing Easier	Economic Values of Conservation and Cropping Diversity	Beginning Farmers: Reflect on Start-Up Years	Strategically Adding Prairie to Working Land to Improve Farmland Health	Fruit Trees 101: Types and Care	Food System Development: What Role Do Support Organizations Play?	Spirituality in Agriculture	Adding Specialty Crops to a "Traditional" Iowa Farm	

ROOM LOCATIONS			
004 -	Ground Level	Benton Auditorium -	1st Floor
150-179 -	1st Floor	250-275 -	2nd Floor

SATURDAY, JANUARY 24

7:30 – 8:45 a.m.

Registration and Breakfast Meetings – Come enjoy a free breakfast and network with speakers and conference-goers about the following:

- **Jill Clapperton** – rizosphere ecologist
- **Todd Nichols** – specialty fruit and vegetable farmer
- **Blake Vince** – corn, soybean, winter wheat and cover crop farmer
- **Jim VanDerPol** – livestock farmer and writer, Kerkhoven, Minnesota
- **Community Supported Agriculture: Share Plans for 2015**
- **Non-GMO Crops**
- **Preserving Food to Savor the Harvest**
- **In Demand: Opportunities to Sell Meat and Dairy to Wholesale Markets**
- **Non-Operator Landlords: Increasing Conservation, Helping Beginning Farmers**
- **Thinking about Renewable Energy?**
- **Health Insurance Options for 2015**

8 a.m.

Exhibit Hall opens – (1st Floor) – (Beverages available)

9 – 11 a.m.

Round I Workshops – (See schedule grid for room assignments; workshop descriptions are on pg. 16)

- **Growing and Marketing Non-GMO Crops** – (Aaron Bloom; Wayne Hoener)
- **Housing for All (Species): Livestock Facility Options and Designs** – (James Frantzen; Joe Klein)
- **Recordkeeping Analysis Platforms for Crop and Livestock Farmers** – (Dan and Lorna Wilson; Kent Vickre; Erin and Torray Wilson; Al Bruderie)
- **Recipe for Success: Making Quality Compost** – (Ron Rosmann; Jason Jones)
- **In-Field Practices for Organic Vegetable Production** – (Paul Ehrhardt & Kay Jensen)
- **Real-Life Business Plan Vetting** – (Jacob Petersen; Jordan Scheibel; Kristen Schulte; Deb Downey)
- **Innovative Landowner-Farmer Partnerships** – (Kate Edwards; Dick Sloan)
- **Iowa Farms in a Changing Climate** – (Fred Abels; Christopher J. Anderson; Gabrielle Roesch)

11 – 11:30 a.m.

Break to visit with sponsors and exhibitors in the Exhibit Hall – (Snacks available in the Exhibit Hall)

11:30 a.m. – 12:30 p.m.

Round II Workshops – (See schedule grid for room assignments; workshop descriptions are on pgs. 16-17)

- **Rotations and Diversity – How to Shake It Up** – (Jill Clapperton)
- **What's the Deal with Cover Crops, Livestock and Herbicides?** – (Bob Hartzler; Joe Sellers)
- **He's a Rebel: Grazing Management for Resiliency** – (Francis Thicke)
- **Working Together to Reduce Drift** – (Ann Franzenburg)
- **Tangled Up in Drift Tape: Irrigation Set-Up and Strategy for Vegetable Crops** – (Laura Krouse; Ajay Nair)
- **Back to Our Roots: Re-Establishing Prairie for Multiple Goals** – (Todd Soukup; Laura Jackson)
- **"Map of My Kingdom": Follow-Up Discussion** – (Fred Kirschenmann; Mary Swander)

12:45 – 1:45 p.m.

Lunch – Featuring foods from PFI members – (Plus time to visit the Exhibit Hall)

1:45 – 3:15 p.m.

Round III Workshops – (See schedule grid for room assignments; workshop descriptions are on pgs. 17-18)

- **An Iowa Perspective on Cover Crop Species** – (Wade Dooley; Mark Johnson; Tom Kaspar; Steve McGrew; & Ajay Nair)
- **Niche Pork Marketing** – (LeeAnn & Jim VanDerPol)
- **Taking a Global View of Farmland Conservation and Biodiversity** – (Blake Vince)
- **The Right Tool for the Job ... And For You!** – (Nate Fethke; Maya Ramaswamy)
- **Don't Give It Away! Vegetable Pricing and Philosophy** – (Kay Jensen & Paul Ehrhardt)
- **Walk-In Cooler Construction and Efficiency** – (Tony Thompson; Rich Schuler)
- **Farm Transfer with Farming and Non-Farming Heirs** – (Cindy Madsen; Kate Kohorst)

3:15 – 3:30 p.m.

Break – (Snacks available in the Exhibit Hall)

3:30 p.m.

Silent Auction closes

3:30 – 4:30 p.m.

Round IV – Workshops: U-Pick – (See schedule grid for room assignments)

- **Beginning Farmers: Reflect on Start-Up Years**
- **Fruit Trees 101: Types and Care**
- **Spirituality in Agriculture**
- **Adding Specialty Crops to a "Traditional" Iowa Farm**
- **Food System Development: What Role Do Support Organizations Play?**
- **Economic Values of Conservation and Cropping Diversity**
- **Grazier Gear Show-and-Tell: Equipment to Make Grazing Easier**
- **Strategically Adding Prairie to Working Land to Improve Farmland Health**

SATURDAY WORKSHOP DETAILS

ROUND I: 9 - 11 A.M.

— Growing and Marketing Non-GMO Crops

Non-GMO crops offer growers, integrators and end users an opportunity to increase revenue while providing an option many markets are seeking. Farmer Aaron Bloom and seed dealer Wayne Hoener will discuss feeding trial results, end-user demand and available contracts for Iowa growers.

AARON BLOOM grows corn and soybeans near Albert City. Much of his grain is raised and marketed as non-GMO.

WAYNE HOENER works for eMerge Genetics, concentrating on non-GMO soybeans and corn.

— Housing for All (Species): Livestock Facility Options and Designs

James Frantzen and Joe Klein will show innovative livestock facility designs that address natural care, building standards, deep bedding, outdoor and pasture access and more. See layouts, view budgets and get advice on the do's and don'ts of designing and constructing facilities for certified organic swine, beef and dairy production.

JAMES FRANTZEN owns and operates Riverside Feeds, LLC near Riceville, producing non-GMO and organic feed, and raises hogs with his family.

JOE KLEIN is a regional pool manager at Organic Valley, and a former Organic Valley dairy pool member. He is also a former organic staff inspector with MOSA.

— Recordkeeping Analysis Platforms for Crop and Livestock Farmers

Learn about two recordkeeping analysis platforms from experts and farmers who use them in their own operations. Kent Vickre and Dan Wilson will talk about the Iowa Farm Business Association. Al Bruderie and Erin Wilson will discuss FINPACK. General recordkeeping philosophies outside these platforms will also be discussed.

DAN and LORNA WILSON farm near Paullina, raising pigs, poultry and organic corn, soybeans, small grains and hay.

KENT VICKRE is the state coordinator for the Iowa Farm Business Association.

ERIN and TORRAY WILSON, the next generation farming with Dan and Lorna Wilson, farm near Paullina, where they run a flock of 150 ewes with lambs and operate a new grass-based organic dairy.

AL BRUDERIE farms corn and soybeans in southwestern Minnesota near Lewisville. Al is skilled in FINPACK and enjoys working with other farmers on business planning.

— Recipe for Success: Making Quality Compost

Many farmers "compost." Far fewer are willing to say they do it well. Hear how Ron Rosmann uses his hog and cattle manure, mixed with straw, to make some of the best compost around. Then listen in as Ron and Jason Jones, a fruit and vegetable farmer near Des Moines who is experimenting with compost and compost tea production, discuss how Ron's system can be adapted for use on fruit and vegetable farms.

RON ROSMANN is an organic, diversified crop and livestock farmer near Harlan.

JASON JONES owns and operates Wilted Leaf Farm with his wife, Erin Drinnin, near Cambridge.

— In-Field Practices for Organic Vegetable Production

Walk with Paul Ehrhardt through a discussion of in-field practices for soil health and product management used to create delicious food for JenEhr Farm customers in northern Dane County, Wisconsin. The farm includes two almost-grown "kids"; 14 full-time seasonal staff; five four-season high tunnels; 2-plus acres of three-season hay groves; 4 acres of strawberries; 1 acre of blueberries; 25 acres of vegetable production; and 25 acres used to raise 6,000 pastured chickens.

JenEhr Farm is run by farmers **PAUL EHRHARDT** and **KAY JENSEN** on 110 acres of certified organic prairie farmland near Sun Prairie, Wisconsin.

— Real-Life Business Plan Vetting

See a candid review of two beginning farmers' business plans: Jacob Petersen's dairy sheep business, and Jordan Scheibel's vegetable farm. Learn the process from the farmers and hear from an expert panel what makes a well-written business plan.

JACOB PETERSEN grew up and farms on a diversified family farm near Knoxville.

JORDAN SCHEIBEL raises fruits and vegetables at Middle Way Farm, located at the Grin City Collective artist residency north of Grinnell.

KRISTEN SCHULTE is a farm business management field specialist with ISU Extension in Howard County.

DEB DOWNEY, from Indianola, helps entrepreneurs map their start-ups, adapt as they grow and connect with resource partners.

JIM PATTON, of Ames, is a retired banker with a 20-year career in banking. He also served as a county and regional ISU Extension education director for 16 years.

— Innovative Landowner-Farmer Partnerships

Landowners are key to success for many beginning farmers who cannot or should not purchase expensive farmland when starting out. Learn about one landowner-farmer partnership – their goals, why they are working together, specifics about their arrangements and advice for others considering similar partnerships.

KATE EDWARDS farms near Solon, on land owned by **DICK SCHWAB**.

— Iowa Farms in a Changing Climate

As climate becomes less predictable, farmers are entering uncharted territory. Hear a farmer, agronomist and rural sociologist discuss the impacts of a changing climate on agriculture in Iowa and the Midwest.

FRED ABELS raises row crops and beef cattle near Holland.

CHRISTOPHER J. ANDERSON is assistant director of the Climate Science Program at ISU.

GABRIELLE ROESCH is a research assistant at ISU working on the Sustainable Corn Project.

ROUND II: 11:30 A.M. - 12:30 P.M.

— Rotations and Diversity – How to Shake It Up

Cover crop cocktails, interseeding, living mulches and relay cropping: What plant species are appropriate for corn, beans

(Continued on next page →)

SATURDAY WORKSHOP DETAILS

and winter wheat rotations? How much diversity is needed? How do you know which plant does what? Come prepared with your ideas and goals; this session will explore as many scenarios as possible.

JILL CLAPPERTON is principal scientist at and co-founder of Rhizoterra Inc., and a well-known international lecturer and advocate for practices promoting soil health.

— What's the Deal with Cover Crops, Livestock and Herbicides? (In Partnership with Iowa Learning Farms)

Your herbicide plan can have a significant impact on the success of cover crops in your operation. Learn research results and what to consider when determining your herbicide plan, as well as information on herbicide livestock grazing restrictions for cover crops.

BOB HARTZLER is an extension weed specialist and professor of agronomy at ISU.

JOE SELLERS is an ISU Extension beef specialist in central and south-central Iowa.

— He's a Rebel: Grazing Management for Resiliency

Francis Thicke will discuss how pasture and dairy herd management impacts his vision for long-term ecological and financial resiliency.

FRANCIS THICKE owns and operates Radiance Dairy in Fairfield, with his wife, Susan.

— Working Together to Reduce Drift

Pesticide drift has affected the bottom line and health of many Iowa farms. Participate in a discussion, led by farmer Ann Franzenburg, about how together farmers and friends of farmers can have a strong voice and impact in reducing drift incidents in Iowa.

ANN FRANZENBURG raises corn, soybeans, hogs, medicinal herbs, tomatoes, greens, cut flowers, strawberries, ginger and blueberries with her husband Eric near Van Horne.

— Tangled Up in Drift Tape: Irrigation Set-Up and Strategy for Vegetable Crops

Are irrigation woes holding you back? Join Laura Krouse of Abbe Hills Farm and ISU's Ajay Nair to learn about types of irrigation systems for vegetable farms, how each fits with production systems and how to decide which type is right for your farm.

LAURA KROUSE owns and operates Abbe Hills Farm near Mount Vernon. The 72-acre farm produces food for a CSA that supports about 200 families.

AJAY NAIR is an assistant professor in the Department of Horticulture at ISU working in the area of sustainable vegetable production.

— Back to Our Roots – Re-Establishing On-Farm Prairie for Multiple Goals

Adding prairie to your farm provides pollinator habitat, and wildlife and plant diversity. Learn how soil scientist Todd Soukup has installed native prairie on a variety of landscapes. Hear from Laura Jackson about different prairie species and the ways prairie can benefit the landscape.

TODD SOUKUP is a soil scientist who has installed and maintained

native vegetation on a variety of landscapes over the past 15 years in Iowa and Illinois.

LAURA JACKSON is a biology professor at UNI focusing on restoring biological diversity in agriculture and seedling establishment in tallgrass prairie restoration.

— "Map of My Kingdom": Follow-Up Discussion

Many "don't talk much about money or anything else ... And land transition takes talk – a lot of talk," according to playwright Mary Swander. Join Mary and Fred Kirschenmann, who has been through his own land transition, in a follow-up discussion of the Friday evening performance of "Map of My Kingdom."

FRED KIRSCHENMANN is a Distinguished Fellow at the Leopold Center for Sustainable Agriculture and a North Dakota farmland owner.

MARY SWANDER is a co-founder of the national group AgArts and the author of 13 books and plays.

ROUND III: 1:45 - 3:15 P.M.

— An Iowa Perspective on Cover Crop Species

(In Partnership with Iowa Learning Farms)

Choosing the right cover crop species for your operation can be a challenge. Join a panel of Iowa farmers and researchers as they discuss the top 10 Iowa cover crops and share their thoughts on which they recommend and which they would avoid.

WADE DOOLEY is an integrated crop and livestock farmer near Albion.

MARK JOHNSON is a field agronomist with ISU Extension.

TOM KASPAR is a plant physiologist with USDA-ARS National Laboratory for Agriculture and the Environment.

STEVE MCGREW is a corn, soybean and cover crop farmer near Emerson.

AJAY NAIR is a vegetable production specialist with ISU Extension.

— Niche Pork Marketing

Selling niche pork can be a profitable way for small farms to compete, or larger farms to diversify. Learn how to capitalize on this market opportunity with LeeAnn and Jim VanDerPol. They will describe retail and wholesale aspects of their meat business; relay the history of its development; cover customer expectations and ways to gain and maintain their trust; and discuss the staff needs of a marketing business and how those differ from a farm.

LEEANN and JIM VANDERPOL raise hogs, chickens and cattle with their son, daughter-in-law and grandchildren near Kerkhoven, Minnesota.

— Taking a Global View of Farmland Conservation and Biodiversity

What would an agriculture map look like if we zoomed out and viewed the globe? Join Blake Vince on a verbal tour of global perspectives on agriculture he gained while traveling as a Nuffield scholar. He will describe his farm's focus on soil health using cover crops and minimal tillage, and present his view that to take yields to the next level, farmers must adopt a biological approach to increase productivity.

BLAKE VINCE is a fifth-generation farmer who raises corn, soybeans, winter wheat and cover crops near Merlin, Ontario. He was a 2013 Nuffield Scholar, which allowed him to travel the globe learning about using multi-species cover crops.

(Continued on pg. 18 →)

SATURDAY WORKSHOP DETAILS

● The Right Tool for the Right Job ... And for You!

There are "ergonomic" tools and then there are the right tools for the job – and for you. Learn how to determine if a tool is "the one." See examples (the good and the bad!) from several PFI members' farms.

NATE FETHKE, a professor in the departments of Occupational and Environmental Health and Biomedical Engineering at the University of Iowa (U of I), began his career as an ergonomics engineer with Fiskars Brands, Inc.

MAYA RAMASWAMY is a Ph.D. student in Occupational and Environmental Health at the U of I, examining the intersection of ergonomics and agricultural enterprise sustainability.

● Don't Give It Away! Vegetable Pricing and Philosophy

Kay Jensen of JenEhr Farm will discuss how she and husband Paul Ehrhardt created their pricing philosophy. She will also provide details of pricing structures for their 25 acres of vegetables.

JenEhr Farm is run by **KAY JENSEN and PAUL EHRHARDT** on 110 acres of certified organic prairie farmland in northern Dane County, Wisconsin.

● Walk-In Cooler Construction and Efficiency

Rich Schuler and Tony Thompson will share their experiences building, modifying and monitoring the performance of walk-in coolers on fruit and vegetable farms using commercial chillers and CoolBots.

TONY THOMPSON has a Ph.D. in mechanical engineering, and raises fruits and vegetables at New Family Farm near Elkhart.

RICH SCHULER is Practical Farmers' energy consultant and a lecturer in astronomy at ISU.

● Farm Transfer with Farming and Non-Farming Heirs

Which farm transition issues should you consider when you have three sons and only one farm? Cindy Madsen will describe her farm, family and goals for the farm's continuation. Attorney Kate Kohorst will then provide an analysis of some of the issues the Madsens should consider as they plan for the farm's future.

CINDY MADSEN farms with her husband, Vic, and son Eric in Audubon County.

Lawyer **KATE KOHORST** specializes in wills, trusts, estate planning, probate law, real estate and tax at Kohorst Law Firm in Harlan.

ROUND IV: U-PICK – 3:30 – 4:30 P.M.

● Join in facilitated discussions on the following topics:

- *Beginning Farmers: Reflect on Start-Up Years*
- *Fruit Trees 101: Types and Care*
- *Spirituality in Agriculture*
- *Adding Specialty Crops to a "Traditional" Iowa Farm*
- *Food System Development: What Role Do Support Organizations Play?*
- *Economic Values of Conservation and Cropping Diversity*
- *Grazier Gear Show-and-Tell: Equipment to Make Grazing Management Easier*
- *Strategically Adding Prairie to Working Land to Improve Farmland Health*

Thank You for Coming!

**PLEASE DON'T FORGET TO FILL OUT YOUR
CONFERENCE EVALUATION FORM!**

*(You can drop it at the registration desk, or leave it with a
staff person at your last session.)*

SPEAKER DETAILS

CONFERENCE SESSIONS

Aaron Bloom grows corn and soybeans near Albert City. Much of his grain is raised and marketed as non-GMO.

SESSIONS: "Growing and Marketing Non-GMO Crops" (Saturday, Round I, 9-11 a.m.)

Ajay Nair is an assistant professor in the Department of Horticulture at ISU working in the area of sustainable vegetable production.

SESSIONS: "Tangled Up in Drift Tape: Irrigation Set-Up and Strategy for Vegetable Crops" (Saturday, Round II, 11:30 a.m.-12:30 p.m.); "An Iowa Perspective on Cover Crop Species" (Saturday, Round III, 1:45-3:15 p.m.)

Al Brudellie farms corn and soybeans in southwestern Minnesota near Lewisville. Al is skilled in FINPACK and enjoys working with other farmers on business planning.

SESSIONS: "Recordkeeping Analysis Platforms for Crop and Livestock Farmers" (Saturday, Round I, 9-11 a.m.)

Ann Franzenburg raises corn, soybeans, hogs, medicinal herbs, tomatoes, greens, cut flowers, strawberries, ginger and blueberries with her husband Eric near Van Horne.

SESSIONS: "Working Together to Reduce Drift" (Saturday, Round II, 11:30 a.m.-12:30 p.m.)

Ashley Craft is the program director for Green Iowa AmeriCorps, based at the University of Northern Iowa (UNI).

SESSIONS: "Up on the Rooftop: Energy Conservation and Solar PV" (Friday, 12:30-4:30 p.m.)

Blake Vince is a fifth-generation farmer who raises corn, soybeans, winter wheat and cover crops near Merlin, Ontario. He is also director of the Innovative Farmers Association of Ontario.

SESSIONS: "Get the Dirt on Soil Ecology" (Friday, 12:30-4:30 p.m.); "Breakfast Networking Cluster" (Saturday, 7:30-8:45 a.m.); "Taking a Global View of Farmland Conservation and Biodiversity" (Saturday, Round III, 1:45-3:15 p.m.)

Bob Hartzler is an extension weed specialist and professor of agronomy at ISU.

SESSIONS: "What's the Deal with Cover Crops, Livestock and Herbicides?" (Saturday, Round II, 11:30 a.m.-12:30 p.m.)

Brett McClavy is the head cheesemonger and manager at The Cheese Shop of Des Moines.

SESSIONS: "Nose-to-Tail Cooking and Dining" (Friday, 12:30-4:30 p.m.)

Christopher J. Anderson is assistant director of the Climate Science Program at ISU.

SESSIONS: "Iowa Farms in a Changing Climate" (Saturday, Round I, 9-11 a.m.)

Cindy Madsen farms with her husband, Vic, and son Eric in Audubon County.

SESSIONS: "Farm Transfer with Farming and Non-Farming Heirs" (Saturday, Round III, 1:45-3:15 p.m.)

Craig Chase leads the Marketing and Food Systems Initiative Research Program at the Leopold Center. He has 27 years of experience in extension programs as a farm management specialist focusing on

applied economics, food crops, niche markets and alternative agricultural enterprises.

SESSIONS: "Cards on the Table: Putting Farm Financial Statements in Context" (Friday, 12:30-4:30 p.m.)

Dan and Lorna Wilson farm near Paullina, raising pigs, poultry and organic corn, soybeans, small grains and hay.

SESSIONS: "Recordkeeping Analysis Platforms for Crop and Livestock Farmers" (Saturday, Round I, 9-11 a.m.)

Deb Downey, from Indianola, helps entrepreneurs map their start-ups, adapt as they grow and connect with resource partners.

SESSIONS: "Real-Life Business Plan Vetting" (Saturday, Round I, 9-11 a.m.)

Dick Schwab owns land near Solon, which he rents to beginning farmer Kate Edwards.

SESSIONS: "Innovative Landowner-Farmer Partnerships" (Saturday, Round I, 9-11 a.m.)

Erin and Torray Wilson, the next generation farming with Dan and Lorna Wilson, farm near Paullina, where they run a flock of 150 ewes with lambs and operate a new grass-based organic dairy.

SESSIONS: "Recordkeeping Analysis Platforms for Crop and Livestock Farmers" (Saturday, Round I, 9-11 a.m.)

Ethan and Rebecca Book own and operate Crooked Gap Farm in Knoxville, where they raise pastured pork, beef, lamb, poultry and rabbits.

SESSIONS: "Nose-to-Tail Cooking and Dining" (Friday, 12:30-4:30 p.m.)

Joe Sellers is an ISU Extension beef specialist in central and south-central Iowa.

SESSIONS: "What's the Deal with Cover Crops, Livestock and Herbicides?" (Saturday, Round II, 11:30 a.m.-12:30 p.m.)

Francis Thicke owns and operates Radiance Dairy in Fairfield, with his wife, Susan.

SESSIONS: "He's a Rebel: Grazing Management for Resiliency" (Saturday, Round II, 11:30 a.m.-12:30 p.m.)

Fred Abels raises row crops and beef cattle near Holland.

SESSIONS: "Iowa Farms in a Changing Climate" (Saturday, Round I, 9-11 a.m.)

Fred Kirschenmann is a Distinguished Fellow at the Leopold Center for Sustainable Agriculture and a North Dakota farmland owner.

SESSIONS: "Map of My Kingdom: Follow-Up Discussion" (Saturday, Round II, 11:30 a.m.-12:30 p.m.)

Gabrielle Roesch is a research assistant at ISU working on the Sustainable Corn Project.

SESSIONS: "Iowa Farms in a Changing Climate" (Saturday, Round I, 9-11 a.m.)

Jack Knight has decades of experience evaluating and inspecting transitioning farms as an organic inspector with the International Organic Inspectors Association.

SESSIONS: "Beginning Organic: Transitioning, Certifying and Q&A" (Friday, 12:30-4:30 p.m.)



(Continued on pg. 20 →)

SPEAKER DETAILS

Jacob Petersen grew up and farms on a diversified family farm near Knoxville.

SESSIONS: "Real-Life Business Plan Vetting" (Saturday, Round I, 9-11 a.m.)

James Frantzen owns and operates Riverside Feeds, LLC near Riceville, producing non-GMO and organic feed, and raises hogs with his family.

SESSIONS: "Housing for All (Species): Livestock Facility Options and Designs" (Saturday, Round I, 9-11 a.m.)

Jason Jones owns and operates Wilted Leaf Farm with his wife, Erin Drinnin, near Cambridge.

SESSIONS: "Recipe for Success: Making Quality Compost" (Saturday, Round I, 9-11 a.m.)



Jill Clapperton is principal scientist at and co-founder of Rhizoterra Inc., and a well-known international lecturer and advocate for practices promoting soil health. Jill was the rhizosphere ecologist for 16 years at Agriculture and Agri-Food Canada's Lethbridge Research Centre in Lethbridge, Alberta.

SESSIONS: "Get the Dirt on Soil Ecology" (Friday, 12:30-4:30 p.m.); Breakfast Networking Cluster (Saturday, 7:30-8:45 a.m.); "Rotations and Diversity – How to Shake It Up" (Saturday, Round II, 11:30 a.m.-12:30 p.m.)

Jim Patton, of Ames, is a retired banker with a 20-year career in banking. He also served as a county and regional ISU Extension education director for 16 years.

SESSIONS: "Real-Life Business Plan Vetting" (Saturday, Round I, 9-11 a.m.)

Jim VanDerPol grew up on his family farm near Kerkhoven, Minnesota. He and his wife have farmed there since 1977, and currently farm in partnership with their son, daughter-in-law and grandchildren. The farm is home to a hog farrow-to-finish operation as well as free-range chickens and a seasonal cattle grazing business.

SESSIONS: "Multi-Species Grazing with Cows and Pigs" (Friday, 12:30-4:30 p.m.); Breakfast Networking Cluster (Saturday, 7:30-8:45 a.m.); "Niche Pork Marketing" (Saturday, Round III, 1:45-3:15 p.m.)

Joe Klein is a regional pool manager at Organic Valley, and a former Organic Valley dairy pool member. He is also a former organic staff inspector with MOSA.

SESSIONS: "Housing for All (Species): Livestock Facility Options and Designs" (Saturday, Round I, 9-11 a.m.)

Joe Lally is a certified crop adviser and independent technical service provider in Denison; he has experience with organic transition plans.

SESSIONS: "Beginning Organic: Transitioning, Certifying and Q&A" (Friday, 12:30-4:30 p.m.)

Joe Sellers is an ISU Extension beef specialist in central and south-central Iowa.

SESSIONS: "What's the Deal with Cover Crops, Livestock and Herbicides?" (Saturday, Round II, 11:30 a.m.-12:30 p.m.)

Jordan Scheibel raises fruits and vegetables at Middle Way Farm, located at the Grin City Collective artist residency north of Grinnell.

SESSIONS: "Real-Life Business Plan Vetting" (Saturday, Round I, 9-11 a.m.)

Kate Edwards farms near Solon, on land owned by Dick Schwab.

SESSIONS: "Innovative Landowner-Farmer Partnerships" (Saturday, Round I, 9-11 a.m.)

Kate Kohorst is a lawyer who specializes in wills, trusts, estate planning, probate law, real estate and tax at Kohorst Law Firm in Harlan.

SESSIONS: "Farm Transfer with Farming and Non-Farming Heirs" (Saturday, Round III, 1:45-3:15 p.m.)

Kent Vickre is the state coordinator for the Iowa Farm Business Association.

SESSIONS: "Recordkeeping Analysis Platforms for Crop and Livestock Farmers" (Saturday, Round I, 9-11 a.m.)

Kristen Schulte is a farm business management field specialist with ISU Extension in Howard County.

SESSIONS: "Real-Life Business Plan Vetting" (Saturday, Round I, 9-11 a.m.)

Laura Jackson is a biology professor at UNI focusing on restoring biological diversity in agriculture and seedling establishment in tallgrass prairie restoration.

SESSIONS: "Back to Our Roots – Re-Establishing On-Farm Prairie for Multiple Goals" (Saturday, Round II, 11:30 a.m.-12:30 p.m.)

Laura Krouse owns and operates Abbe Hills Farm near Mount Vernon. The 72-acre farm produces food for a CSA that supports about 200 families.

SESSIONS: "Tangled Up in Drift Tape: Irrigation Set-Up and Strategy for Vegetable Crops" (Saturday, Round II, 11:30 a.m.-12:30 p.m.)

LeeAnn VanDerPol raises hogs, chickens and cattle with husband Jim and her son, daughter-in-law and grandchildren near Kerkhoven, Minnesota.

SESSIONS: "Niche Pork Marketing" (Saturday, Round III, 1:45-3:15 p.m.)

Mark Johnson is a field agronomist with ISU Extension.

SESSIONS: "An Iowa Perspective on Cover Crop Species" (Saturday, Round III, 1:45-3:15 p.m.)

Martha McFarland manages Hawkeye Buffalo Ranch, near Fredericksburg, with her father, Dan.

SESSIONS: "Up on the Rooftop: Energy Conservation and Solar PV" (Friday, 12:30-4:30 p.m.)



Mary Swander, the former Poet Laureate of Iowa, is the co-founder of AgArts, a national organization designed to imagine and promote healthy food systems through the arts. She has published widely in many genres, with 13 books to her credit. Her plays include *Driving the Body Back*, *Dear Iowa*, *Farmscape* and *Vang*, which have toured the country and appeared on public television. She performed *Farmscape* at the request of Secretary of Agriculture Tom Vilsack at the USDA headquarters. Mary lives in an old Amish schoolhouse where she grows all her own food. She is the descendant of Irish immigrants who homesteaded in Iowa and handled four generations of land transition.

SESSIONS: "Map of My Kingdom" Play Performance (Friday, 5:30-6:30 p.m.); "Map of My Kingdom: Follow-Up Discussion" (Saturday, Round II, 11:30 a.m.-12:30 p.m.)

Maya Ramaswamy is a Ph.D. student in Occupational and Environmental Health at the U of I, examining the intersection of ergonomics and agricultural enterprise sustainability.

SESSIONS: "The Right Tool for the Job ... And For You!" (Saturday, Round III, 1:45-3:15 p.m.)

SPEAKER DETAILS

Melissa Dunham runs Grinnell Heritage Farm, an 80-acre certified organic vegetable farm in Grinnell, with her husband, Andy. She has an accounting degree.

SESSIONS: "Cards on the Table: Putting Farm Financial Statements in Context" (Friday, 12:30-4:30 p.m.)

Morgan Hoenig grows organic vegetables on her 3-plus-acre farm, Mogo Organic, which she started near Mount Pleasant in 2008.

SESSIONS: "Beginning Organic: Transitioning, Certifying and Q&A" (Friday, 12:30-4:30 p.m.)

Nate Fethke, a professor in the departments of Occupational and Environmental Health and Biomedical Engineering at the University of Iowa (U of I), began his career as an ergonomics engineer with Fiskars Brands, Inc.

SESSIONS: "The Right Tool for the Job ... And For You!" (Saturday, Round III, 1:45-3:15 p.m.)

Paul Ehrhardt and Kay Jensen run JenEhr Farm on 110 acres of certified organic prairie farmland near Sun Prairie, Wisconsin.

SESSIONS: "In-Field Practices for Organic Vegetable Production" (Saturday, Round I, 9-11 a.m.); "Don't Give It Away! Vegetable Pricing and Philosophy" (Saturday, Round III, 1:45-3:15 p.m.)

Rich Schuler is Practical Farmers' energy consultant and a lecturer in astronomy at ISU.

SESSIONS: "Walk-In Cooler Construction and Efficiency" (Saturday, Round III, 1:45-3:15 p.m.)

Ron Rosmann is an organic, diversified crop and livestock farmer near Harlan.

SESSIONS: "Recipe for Success: Making Quality Compost" (Saturday, Round I, 9-11 a.m.)

Scott Shriver grows organic corn, soybeans and wheat near Jefferson in Greene County.

SESSIONS: "Beginning Organic: Transitioning, Certifying and Q&A" (Friday, 12:30-4:30 p.m.)

Steve McGrew is a corn, soybean and cover crop farmer near Emerson.

SESSIONS: "An Iowa Perspective on Cover Crop Species" (Saturday, Round III, 1:45-3:15 p.m.)

Steven Guyer is president and founder of GWA International LLC. He is a NABCEP-certified solar PV installer who has designed more than 60 solar PV systems across Iowa. His project experience includes numerous livestock farms, commercial entities and residences.

SESSIONS: "Up on the Rooftop: Energy Conservation and Solar PV" (Friday, 12:30-4:30 p.m.)

Tim Landgraf runs One Step at a Time Gardens, a CSA farm in Kanawha, with his wife, Jan Libbey.

SESSIONS: "Up on the Rooftop: Energy Conservation and Solar PV" (Friday, 12:30-4:30 p.m.)

Todd Nichols manages his family's 400-acre fruit and vegetable farm. Nichols Farm serves farmers markets, restaurants and CSA members in the Chicago area. The farm was started in 1978 as a 3-acre hobby farm, and has grown into a successful family business with three generations working on the farm.



SESSIONS: "Crop and Market Diversity for a Profitable Farm" (Friday, 12:30-4:30 p.m.); Breakfast Networking Cluster (Saturday, 7:30-8:45 a.m.)

Todd Soukup is a soil scientist who has installed and maintained native vegetation on a variety of landscapes over the past 15 years in Iowa and Illinois.

SESSIONS: "Back to Our Roots – Re-Establishing On-Farm Prairie for Multiple Goals" (Saturday, Round II, 11:30 a.m.-12:30 p.m.)

Tom Kaspar is a plant physiologist with USDA-ARS National Laboratory for Agriculture and the Environment.

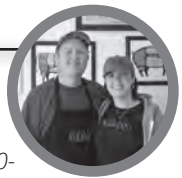
SESSIONS: "An Iowa Perspective on Cover Crop Species" (Saturday, Round III, 1:45-3:15 p.m.)

Tony Thompson has a Ph.D. in mechanical engineering, and raises fruits and vegetables at New Family Farm near Elkhart.

SESSIONS: "Walk-In Cooler Construction and Efficiency" (Saturday, Round III, 1:45-3:15 p.m.)

Ty and Bobbie Gustafson opened Story City Locker in 2012. Chef Brian Malone joined the Gustafsons soon thereafter, bringing his strong interest in crafting artisan sausages and cured meats.

SESSIONS: "Nose-to-Tail Cooking and Dining" (Friday, 12:30-4:30 p.m.)



Wade Dooley is an integrated crop and livestock farmer near Albion.

SESSIONS: "An Iowa Perspective on Cover Crop Species" (Saturday, Round III, 1:45-3:15 p.m.)

Wayne Hoener works for eMerge Genetics, concentrating on non-GMO soybeans and corn.

SESSIONS: "Growing and Marketing Non-GMO Crops" (Saturday, Round I, 9-11 a.m.)

PRE-CONFERENCE SHORT COURSES

Andrew Hoiberg oversees research and product development for Calcium Products, focusing on product evaluation and developing a science-based soil amendment recommendation system. – "Healthy Soil for Healthy Crops"

Chris Henning lives in Cooper and is the farm manager of 320 acres of farmland she owns in Greene County. She has a 50-50 crop share arrangement on about 165 acres of the farmland; the rest is in timber, a pond and the Conservation Reserve Program (CRP). – "Tell Your Story: The Farm Legacy Letter"

Cindy Cambardella is a soil scientist at the USDA National Laboratory for Agriculture and the Environment. – "Healthy Soil for Healthy Crops"

Mike Castellano is an agronomy professor at ISU. His research focuses on biogeochemical cycling and nutrient transport within soil. – "Healthy Soil for Healthy Crops"

Rick Cruse is an assistant agronomy professor at Iowa State University (ISU). His research involves field and laboratory research in soil and crop management, applied soil physics and soil fertility. – "Healthy Soil for Healthy Crops"

Vic Madsen, his wife Cindy and son Eric raise field crops, beef cattle, hogs, chickens and aronia berries. They have farmed in Audubon County since 1975. – "Tell Your Story: The Farm Legacy Letter"

NOTES



THANK YOU

TO OUR MAJOR SPONSORS



**ALBERT LEA
SEED**



IOWA STATE UNIVERSITY
Department of Agronomy

