

PRACTICAL FARMERS OF IOWA

# 2019 FIELD DAY Guide



PRACTICAL *farmers*  
of Iowa

[practicalfarmers.org](http://practicalfarmers.org)

# THANK YOU TO OUR



**IOWA STATE UNIVERSITY**  
**Department of Agronomy**



# LEVEL A SPONSORS!



Unilever



GRAIN MILLERS



DEVELOPING SUSTAINABLE SUPPLY CHAINS IN AGRICULTURE



PEPSICO

► Visit pages 30-31 to see the rest of our major sponsors!

# TABLE OF CONTENTS

## INTRODUCTION

- 5** Welcome!
- Background, Logistics, Guidelines and More

## LIST OF PFI FIELD DAYS, EVENTS AND LOCATION MAP

- 6-7** PFI Field Days and Events List
- 7** PFI Field Days and Events Location Map

## PFI FIELD DAYS AND EVENTS

- 8-51** Individual Field Days and Events Pages

## LIST OF FRIEND-OF-PFI EVENTS

- 52-55** Friend-of-PFI Events List

## MEMBERSHIP BENEFITS AND FORM

- 57** Benefits of Membership
- 58** Membership Form

## LOOKING FOR MORE EVENTS OR INFORMATION?

In addition to the events listed in this guide, Practical Farmers organizes events and workshops all year long. Be sure to check our website often ([practicalfarmers.org](http://practicalfarmers.org)) for the most up-to-date schedule, visit us on social media or become a PFI member to get notified about upcoming events.





# WELCOME!

## WELCOME TO PRACTICAL FARMERS' 2019 FIELD DAY SEASON!

We are offering another full schedule of events and are excited to see many of you as our field day season gets underway! Field days are a foundation of our work to connect farmers and create opportunities for our friends to share in PFI's vision: An Iowa with healthy soil, healthy food, clean air, clean water, resilient farms and vibrant communities.

## FARMER-LED EVENTS

At Practical Farmers of Iowa, we have a unique learning model. Our field days (and other events!) are led by our farmer members. We know farmers are the experts on their farming systems, decisions, challenges and solutions, and we are thankful so many farmer-leaders believe that sharing their knowledge, discoveries, mistakes and successes benefits everyone. Be prepared to explore topics that span the agricultural spectrum. We offer field day topics on production, land stewardship, conservation, local foods and more.

## OPEN TO EVERYONE

At Practical Farmers, we take pride in our big tent that includes farms of all sizes and a diversity of production practices, as well as many non-farmers who support our work, values and the sense of community that membership brings. You don't need to be a member or farmer to attend! We welcome and invite anyone to attend and learn from our field days.

Bring a friend! PFI field days are an excellent place for farmers to see what their neighbors are trying, or to share their perspective and insights with other farmers. Families and friends of farmers will also benefit from attending to learn more about the diverse scope of Iowa agriculture.

## CIVILITY COMMITMENT

Our commitment is to learn from each other. We acknowledge differences in beliefs, values, politics, culture, interests and experiences.

### WE COMMIT TO:

- Listen respectfully to each other
- Refrain from personal insults and other disrespectful actions
- Recognizing and respecting different levels of understanding
- Actively seek common ground

## COOPERATORS' PROGRAM

Farmers in our Cooperators' Program conduct on-farm research experiments and demonstrations to better answer their most challenging questions. Knowledge from this research helps equip farmers to be more profitable, to be better environmental stewards and, ultimately, to make their farms and communities more resilient.



PRACTICAL FARMERS OF IOWA  
**COOPERATORS'  
PROGRAM**

*Look for this logo throughout the guide to learn more at that event!*

## LOGISTICS

**All PFI events occur rain or shine.**

Most PFI field days are free. If there is a cost, it will be advertised on the field day page.

When traveling to our field days, look for directional field day signs with our logo on it.

## QUESTIONS?

Contact the PFI office at [info@practicalfarmers.org](mailto:info@practicalfarmers.org) or (515) 232-5661.

# PFI FIELD DAYS AND EVENTS

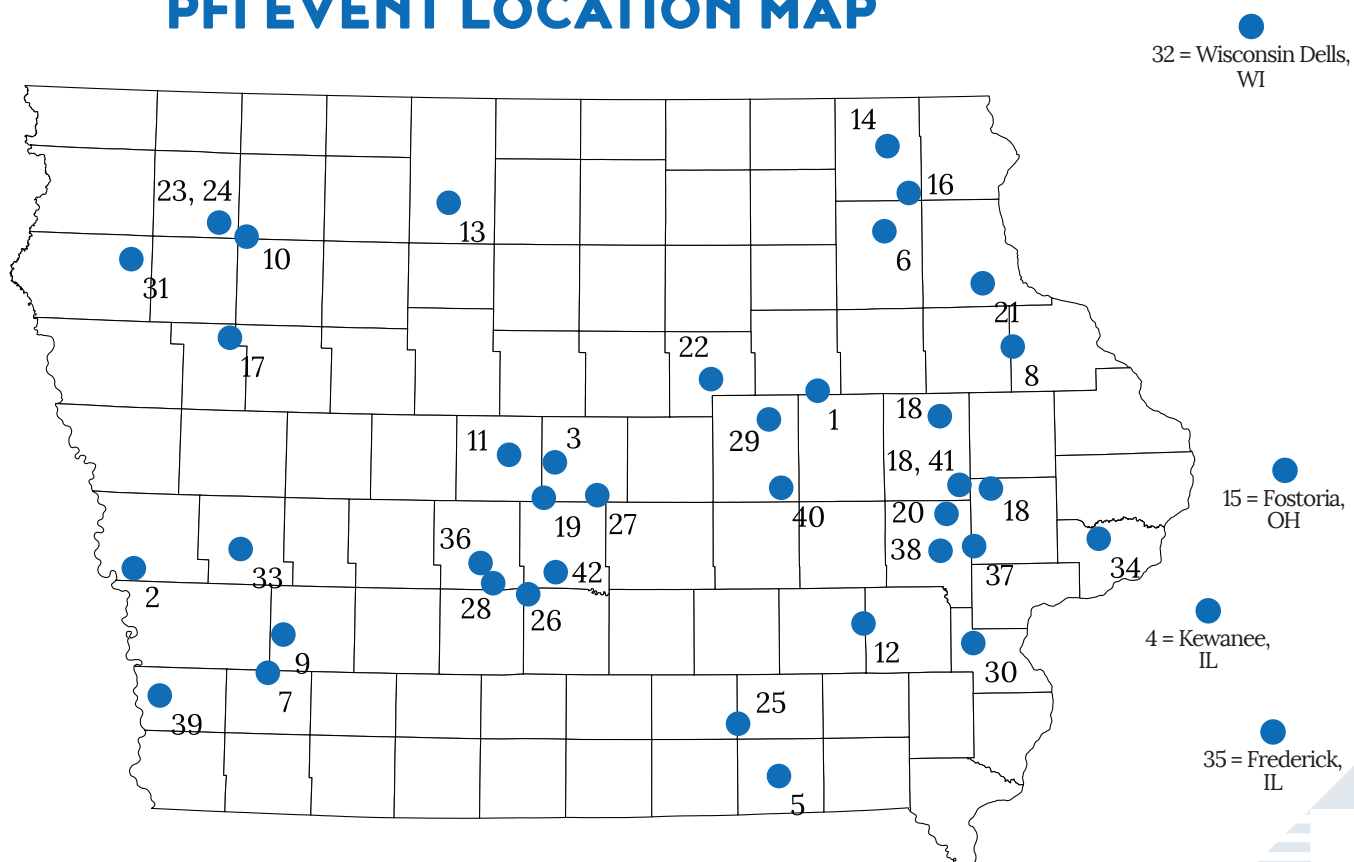
(Please note: The number in parentheses after each event corresponds to its location on the map on page 7.)

<b>JUNE 4 • LA PORTE CITY</b> .....8	<b>JULY 2 • GALVA</b> .....24
Harvesting Ryelage for Cattle Feed (1)	Cover Crops With Purpose: Weed Suppression, Soil Health and Unexpected Benefits (17)
<b>JUNE 4 • MISSOURI VALLEY</b> .....9	<b>JULY 2 • BUS TOUR</b> .....25
Producing Heirloom Tomatoes and Nurturing a Food Forest (2)	Beginning and Aspiring Farmer Bus Tour (18)
<b>JUNE 5 • AMES</b> .....10	<b>JULY 10 • SLATER</b> .....26
Livestock Parasites 101: Prevention, Identification and Treatment (3)	Farmland Owner Legacy Award + On-Farm Conservation Event (19)
<b>JUNE 6 • KEWANEE, IL</b> .....11	<b>JULY 11 • SOLON</b> .....27
Impact of Cover Crops on Water Quality and Soil Health (4)	Making an Orchard Work in Iowa (20)
<b>JUNE 11 • BLOOMFIELD</b> .....12	<b>JULY 16 • ELKPORT</b> .....28
Perennial and Annual Forages for Organic Dairy Cattle (5)	Growing Vegetables for Your Rural Community (21)
<b>JUNE 13 • WEST UNION</b> .....13	<b>JULY 17 • GRUNDY CENTER</b> .....29
Hybrid Rye: Managing, Marketing and Feeding Livestock (6)	Soil Health and Water Quality Workshop (22)
<b>JUNE 14 • ELLIOTT</b> .....14	<b>JULY 17 • SUTHERLAND</b> .....32
Managing Pig Health in a Pasture-Based System (7)	Prairie and Beneficial Insect Habitat on an Organic Crop Farm (23)
<b>JUNE 18 • DYERSVILLE</b> .....15	<b>JULY 17 • SUTHERLAND</b> .....33
Using Small Grains to Protect Your Bottom Line (8)	Organic Row Crop Production and Mechanical Weed Control (24)
<b>JUNE 18 • LEWIS</b> .....16	<b>JULY 19 • BLAKESBURG</b> .....34
On-Farm Habitat Management for Wildlife and Water Quality (9)	Commercial Hair Sheep Production on Pasture (25)
<b>JUNE 19 • PETERSON</b> .....17	<b>JULY 23 • CUMMING</b> .....35
Grazing Native Perennials in the Little Sioux Watershed (10)	RAGBRAI at Howell's Greenhouse and Pumpkin Patch (26)
<b>JUNE 20 • BOONE</b> .....18	<b>AUGUST 3 • MAXWELL</b> .....36
Greenhouse Hydroponics, Succulents and Houseplants (11)	One Family's Vision for Agroforestry in Iowa (27)
<b>JUNE 20 • KEOTA</b> .....19	<b>AUGUST 4 • VAN METER</b> .....37
Diversified Crop Rotations and Cover Crops (12)	Next Generation Summit (28)
<b>JUNE 21 • ALGONA</b> .....20	<b>AUGUST 6 • BUCKINGHAM</b> .....38
Pumpkins and Produce in One Multipurpose Space (13)	Soil Health Smorgasbord for Farmers + Family Learning Event (29)
<b>JUNE 25 • DECORAH</b> .....21	<b>AUGUST 7 • COLUMBUS JUNCTION</b> .....39
Controlling Weeds in the Row for Organic Crops (14)	Growing, Grading, Selling and Storing Chestnuts (30)
<b>JUNE 26 • FOSTORIA, OH</b> .....22	<b>AUGUST 14 • REMSEN</b> .....40
30 Years of Small Grains and No-Till on an Ohio Farm (15)	Transition to Organic With Diversity to Improve Soils (31)
<b>JUNE 30 • CASTALIA</b> .....23	<b>AUGUST 15-16 • WISCONSIN DELLS, WI</b> .....41
Regenerating the Family Farm Through Diversification (16)	SMALL GRAINS CONFERENCE Rotationally Raised: Making Small Grains Work (32)



<b>AUGUST 16 · HARLAN</b> .....42	<b>SEPTEMBER 21 · IOWA CITY</b> .....47
Cultivating Farm Resilience for a Changing Climate (33)	Rotationally Raising Poultry on Pasture (38)
<b>AUGUST 18 · DONAHUE</b> .....43	<b>SEPTEMBER 22 · GLENWOOD</b> .....48
U-Pick Cut Flowers: Production and Management (34)	Beekeeping in Iowa: Challenges and Sweet Rewards (39)
<b>AUGUST 22 · FREDERICK, IL</b> .....44	<b>SEPTEMBER 28 · CHELSEA</b> .....49
Grazing Covers Crops and Building Community 101 (35)	Using Goats for Restoration and Market Diversification (40)
<b>AUGUST 24 · ADEL</b> .....45	<b>OCTOBER 6 · MOUNT VERNON</b> .....50
Managing an Organic Apple Orchard (36)	Extending the Vegetable Season in the Field and High Tunnel (41)
<b>SEPTEMBER 17 · WEST BRANCH</b> .....46	<b>NOVEMBER 10 · DES MOINES</b> .....51
Establishing Pollinator Habitat at Scattergood Friends School Farm (37)	Urban Farming: Greens and Farm Store Sales (42)

## PFI EVENT LOCATION MAP



### MAP KEY

● = PFI Field Days and Events

**Note:** Out-of-state locations are not shown to geographic scale; they have been placed to give you an approximate representation of their position relative to Iowa.

# HARVESTING RYELAGE FOR CATTLE FEED

*Tuesday, JUNE 4*

4 – 7 p.m.

14233 Kline Road  
La Porte City, IA 50651

*Host:* **TERRY WARD**  
(319) 269-2038

Dinner will be catered and served at  
La Porte City Community Center  
(300 1<sup>st</sup> Street, La Porte City).

**RSVP for the meal to Debra Boekholder,**  
**debra@practicalfarmers.org** or (515) 232-5661,  
**or online at [practicalfarmers.org/field-days](http://practicalfarmers.org/field-days),**  
**by Friday, May 31.**

Terry plants diverse crop rotations that include cereal rye, which is harvested for several uses. He'll share his experience making ryelage, rye hay and rye straw. We'll hear from Terry's dairy farming neighbors, Josh and Dick Blough, who feed this ryelage to their dairy cattle. We'll start in the field to view some cover crops before moving indoors for further discussion and a meal.

## TOPICS:

Harvesting ryelage  
Making rye hay for feeding dairy heifers  
Rye for bedding  
Diverse crop rotations

## SPEAKERS:

**Josh and Dick Blough** – father-and-son dairy farming neighbors of the Wards who feed Terry's ryelage to their cattle.



## THE FARM:

Terry and his wife, Rachel, farm 154 acres, of which 142 are tillable, divided into quarters. They plant a four-year rotation consisting of corn, soybeans, oats and hay. Terry plants rye after corn stalks are baled in the fall, and oats in the spring on soybean ground. On hay ground, Terry cuts hay four times, then spreads manure before planting to corn. The Wards have been farming since 1982 outside of La Porte City. They milked cows until 1993, then Terry started auto and truck repair work. Terry farms part-time doing custom-combining and custom dairy heifer feeding.

## DIRECTIONS:

**To the field day:** From La Porte City, take E Tama Road west for 2.4 miles. Turn left (south) on Kline Road and travel 0.2 mile; the farm will be on the left.

**From 14233 Kline Road to the La Porte City Community Center:** Travel north on Kline Road for 0.2 mile. Turn right (east) on E Tama Road and travel for 2.4 miles, then turn right onto W Main Street and go 0.2 mile. Turn right onto Commercial Street, then left onto 1st Street; La Porte City Community Center is on the left.



# PRODUCING HEIRLOOM TOMATOES AND NURTURING A FOOD FOREST

*Tuesday, JUNE 4*

4 – 6 p.m.

3306 Lima Trail

Missouri Valley, IA 51555

*Hosts:* **TERRA & MATTHEW HALL**

Rhizosphere Farm  
rhizospherefarm.org

A light supper will follow the field day.

**RSVP for the meal to Debra Boekholder,**  
**debra@practicalfarmers.org or (515) 232-5661,**  
**or online at [practicalfarmers.org/field-days](http://practicalfarmers.org/field-days),**  
**by Friday, May 31.**

Join Matthew and Terra for a tour of their high tunnels, tomato arbor and young food forest. On the vegetable side, they will discuss the heirloom varieties they have tried and like (or don't like!), and their practices for other vegetables. Walking through the food forest, Matthew and Terra will share which trees and shrubs are performing best on their farm through the early years of establishment, and how their designs on paper are playing out on the land.

## TOPICS:

Heirloom tomatoes in high tunnel and field  
Vegetable production  
Designing a food forest  
Asian pear, apricot and quince production  
Finding and purchasing farmland

*Sponsored by:*

**BLOCK 16**

**IOWA FARMERS UNION**

**OMAHA FARMERS MARKET**



## THE FARM:

Rhizosphere Farm was started by Matthew and Terra Hall in 2009. After a few years on rented land, they decided they needed to buy land to achieve their farm goals of incorporating fruit and nut trees, and having better on-farm infrastructure. In 2013 they found their permanent home just south of Missouri Valley, where they now have 6 acres. Selling through the farmers market and a few wholesale accounts, the Halls are best known for heirloom tomatoes, but they also grow a variety of vegetables. Since 2014, they have been planting a food forest, which is now 1.5 acres and includes apricots, Asian pear, quince, chestnut and hazelnut (among others).

## DIRECTIONS:

**Note:** At the time of printing, I-29 was closed north of Crescent.

**From Omaha:** Take I-29 or I-680 and exit at Crescent (Exit 61A). Head east on County Road G37 / Old Mormon Bridge Road. After 2.2 miles, turn left (north) on Old Lincoln Highway and continue for 11.5 miles. When Old Lincoln Highway becomes Loess Hills Road, continue for 2 miles and turn right on Lima Trail. After 0.4 mile, keep left at the Y-intersection to stay on Lima Trail; the farm will be on the left side of the road in 0.3 mile.

**From the east:** Take I-680 to Loveland (Exit 72). Turn left onto DeSoto Avenue, then left again onto Old Lincoln Highway, which becomes Loess Hills Road. Continue on Loess Hills Road / Old Lincoln Highway for 2.6 miles, then make a hard right onto Lima Trail. After 0.4 mile, keep left at the Y-intersection to stay on Lima Trail; the farm will be on the left side of the road in 0.3 mile.

# LIVESTOCK PARASITES 101: PREVENTION, IDENTIFICATION AND TREATMENT

*Wednesday, JUNE 5*

**5:30 – 8 p.m.**

**College of Veterinary Medicine  
1800 Christensen Drive  
Ames, IA 50010**

*Host:* **DR. MATTHEW BREWER**  
Iowa State University

We'll begin this workshop with a catered meal during the lecture.

**Registration is required. The event is free, but attendance is limited to 20 people.**

**To register, contact Debra Boekholder, [debra@practicalfarmers.org](mailto:debra@practicalfarmers.org) or (515) 232-5661, or sign up online at [practicalfarmers.org/field-days](http://practicalfarmers.org/field-days), by Wednesday, May 29.**

Do you have questions about parasites in your livestock? Learn the essentials from Iowa State University veterinary pathologist Matt Brewer in this hands-on workshop. We'll start with an overview of different livestock parasites, placing special emphasis on those that are transmissible to humans. After the discussion, participants will have a chance to practice performing fecal egg counts on manure samples. The workshop will also give farmers a chance to ask questions and share their experiences with veterinarians. This workshop will be capped at 20 people.

## **TOPICS:**

Livestock parasites  
Zoonotic parasites  
Fecal egg counts  
Q&A with a veterinarian



## **SPEAKER BIO:**

Dr. Matt Brewer is a veterinarian and assistant professor at the ISU College of Veterinary Medicine. In his current role, he teaches courses in parasitology, conducts diagnostic work and leads a basic research laboratory. The laboratory investigates mechanisms for parasite drug resistance and has received funding from National Institutes of Health, USDA and The American Kennel Club.

## **DIRECTIONS:**

**From U.S. 30:** take Exit 146 towards Iowa State University. Merge onto S University Boulevard and go 0.3 mile. Turn right onto ISU C Drive, then right onto Christensen Drive. Park in Lot 96 and walk northeast to The Gentle Doctor Courtyard. Enter through the visitors entrance, not the teaching hospital.



# IMPACT OF COVER CROPS ON WATER QUALITY AND SOIL HEALTH

*Thursday, JUNE 6*

4 – 7 p.m.

405 West South Street  
Kewanee, IL 61443

*Host:* **BRIAN CORKILL**

(309) 525-1376 | [bafarms@frontier.com](mailto:bafarms@frontier.com)

A meal will be provided.

**RSVP for the meal to Debra Boekholder,**  
[debra@practicalfarmers.org](mailto:debra@practicalfarmers.org) or (515) 232-5661,  
or online at [practicalfarmers.org/field-days](http://practicalfarmers.org/field-days),  
by Tuesday, June 4.

Come learn how cover crops can positively impact water quality from a diverse mix of perspectives. You'll hear from a farmer, a soil health expert and an ag retailer's perspective, and you'll get to view a rainfall simulator demonstration. The farmer, Brian, will share his playbook for managing soybeans following a cereal rye cover crop, as well as some of the on-farm research projects he's involved in.

## TOPICS:

Cover crop management  
Ag retailer's perspective on grain markets  
and agronomy

*Sponsored by:*

**HENRY COUNTY FARM BUREAU  
SOIL HEALTH PARTNERSHIP**



## THE FARM:

Brian Corkill and his father, Alan, farm 1,200 acres of corn and soybeans in Henry and Stark counties in Illinois using strip-till and no-till systems, along with cover crops. Brian has been participating in a Soil Health Partnership on-farm research trial to learn more about the profitability of using cover crops in a conventional corn-soybean rotation, and to have a better way to measure how cover crops can improve soil health.

## DIRECTIONS:

**From I-80:** Take Exit 27 toward Galva / Atkinson and go south on 2050 E / County Road 5 for 12 miles. Turn left (east) on N 570th Avenue and go 4 miles, then turn right (south) on Co Rd 41. In 0.5 mile, turn left (east) on W South Street and travel 1 mile.

# PERENNIAL AND ANNUAL FORAGES FOR ORGANIC DAIRY CATTLE

*Tuesday, JUNE 11*

10 a.m. – 1 p.m.

13854 315<sup>th</sup> St.

Bloomfield, IA 52537

*Host:* **SAMUEL MAIBACH**  
(641) 208-6446

The Maibach family will provide lunch, with snacks provided by Organic Valley.

**RSVP for the meal to Debra Boekholder, [debra@practicalfarmers.org](mailto:debra@practicalfarmers.org) or (515) 232-5661, or online at [practicalfarmers.org/field-days](http://practicalfarmers.org/field-days), by Thursday, June 6.**

To weather the downturn in the dairy industry, Samuel and his family, who are organic dairy farmers for Organic Valley, have focused on feed quality and cow comfort. We'll discuss breeding and ration balancing for higher butterfat and milk components; timely haymaking; grazing high-quality forage; and keeping cows comfortable and full during the summer heat. Samuel will share his experience planting, grazing and baling forage oats and summer annual forages, and the flexibility needed when dealing with wet and dry weather. The Maibach's veterinarian, Dr. Guy Jodarski, will speak about natural cow care and dairy health issues.

## TOPICS:

Breeding | Grazing perennial pastures and summer annual forages | Haymaking | Cow comfort and health

*Sponsored by:*

**ORGANIC VALLEY - CROPP COOPERATIVE - ORGANIC PRAIRIE**



## SPEAKER:

**Guy Jodarski** – livestock veterinarian

## THE FARM:

Samuel Maibach, along with his brother, Daniel, and father, Tim, raises a herd of 90 organic, pasture-raised dairy cows. Their milk is marketed through Organic Valley. The Maibachs also have a grass-based beef herd.

## DIRECTIONS:

Follow U.S. 63 south through Bloomfield.; it will turn right and join IA Hwy 2. After about 5 miles, turn left to continue on U.S. 63. In about 8.5 miles, turn right on 305th Street and go 1 mile. Turn left onto Fawn Avenue and take the first right onto 310th Street. At the T-intersection, turn left on Ebony Street and take the first right onto 315th Street. The farm is on the right, shortly after the turn.

# HYBRID RYE: MANAGING, MARKETING AND FEEDING LIVESTOCK

In partnership with Albert Lea Seed and KWS

*Thursday, JUNE 13*

3 – 5:30 p.m.

220 N Industrial Parkway

West Union, IA 52175

*Host:* **LORAN STEINLAGE**

(563) 380-1149 | [flolofarms@gmail.com](mailto:flolofarms@gmail.com)

Food will be available to purchase from the local 4-H club.

**RSVP for the meal to Debra Boekholder, [debra@practicalfarmers.org](mailto:debra@practicalfarmers.org) or (515) 232-5661, or online at [practicalfarmers.org/field-days](http://practicalfarmers.org/field-days), by Tuesday, June 11.**

Learn all about the basics of growing hybrid rye, finding markets and feeding livestock with small grains. Loran will also share his experiences with various rye varieties, growing malt barley and relay cropping.

## TOPICS:

Hybrid rye  
Malt barley  
Feeding trials  
Relay cropping



## THE FARM:

Loran Steinlage is a grain farmer who also works as a practical field engineer for Dawn Equipment and Underground Agriculture. His farm produces a diverse set of crops including corn, soybeans, cereal rye, wheat, barley, buckwheat and cover crops.

## DIRECTIONS:

**To the hybrid rye field:** From the junction of IA Hwy 150 and IA Hwy 56, head south on IA Hwy 150 for 0.25 mile. Turn right (west) onto N Industrial Parkway and go 0.2 mile. Park at the Fayette County Sheriff's office, next to the hybrid rye field.

## Rain location:

12517 220<sup>th</sup> St. (*Loran's garage*)  
West Union, Iowa 52175

If it rains, we will set up in Loran's garage. To get there from the junction of IA Hwy 150 and IA Hwy 56, head west on West Franklin Street and go about 1.25 miles. The farm will be on the left (south) side of the road; look for a grey house and silos.

*Sponsored by:*

CONTINUUM AG  
PIPELINE FOODS



# MANAGING PIG HEALTH IN A PASTURE-BASED SYSTEM

*Friday, JUNE 14*

**10 a.m. – 1:30 p.m.**

**54808 Youngstown Road**

**Elliott, IA 51532**

*Host:* **RON MARDESEN**

**A Frame Acres**

(712) 767-2628 | [aframe@netins.net](mailto:aframe@netins.net)

[facebook.com/A-frame-Acres-202908176425753](https://facebook.com/A-frame-Acres-202908176425753)

A potluck lunch will follow the field day, with pulled pork provided by Niman Ranch; please bring a side dish to share.

**RSVP for the meal to Debra Boekholder, [debra@practicalfarmers.org](mailto:debra@practicalfarmers.org) or (515) 232-5661, or online at [practicalfarmers.org/field-days](https://practicalfarmers.org/field-days), by Tuesday, June 11.**

The Mardesens began selling pigs to Niman Ranch in 2002. In a pasture-based farrow-to-finish pig operation, it is essential to follow precise health procedures. Drew White, a veterinarian for Niman Ranch, will speak about managing vaccine protocols, record-keeping and preventive health measures to conduct for your swine herd. Learn how the Mardesens pasture-farrow and incorporate livestock into their field crop rotations.

## **TOPICS:**

Integrating livestock in field crop rotations  
Pasture-farrowing | Vaccine protocol  
Record-keeping | Marketing pigs with Niman Ranch

*Sponsored by:*

**LYMAN VET CLINIC**

**NIMAN RANCH**

**UNITED FARMERS COOPERATIVE**



## **SPEAKER:**

**Drew White** – Niman Ranch

## **THE FARM:**

A Frame Acres has been in the Mardesen family for five generations. Today, three generations still work the farm. Part of the family's farm ground was virgin land first broken by their ancestors, and the Mardesens are the only people who have ever farmed it. Ron's mom helps with the cattle; Ron and his wife, Denise, run the hogs; and their three children, Matty, Michael and Anna, help out as well. The Mardesens raise as few as 450 hogs up to 1,300 a year, depending on how much corn they harvest the year prior. They mostly grow corn with soybeans in rotation alongside alfalfa, oats and livestock.

## **DIRECTIONS:**

**From I-80:** Take Exit 60 for U.S. 71 and head south for 20 miles. Turn right (west) on IA Hwy 92 (Tucson Road) and travel 8 miles to Griswold. Turn left (south) on IA Hwy 48 (Adair Street), go 5 miles and turn west on Youngstown Road.



# USING SMALL GRAINS TO PROTECT YOUR BOTTOM LINE

*Tuesday, JUNE 18*

10:30 a.m. – 1 p.m.

1542 330<sup>th</sup> Ave.

Dyersville, IA 52040

*Host:* **WAYNE BRUNSMAN**  
brunsman@yousq.net

Lunch will be provided.

**RSVP for the meal to Debra Boekholder, [debra@practicalfarmers.org](mailto:debra@practicalfarmers.org) or (515) 232-5661, or online at [practicalfarmers.org/field-days](http://practicalfarmers.org/field-days), by Friday, June 14.**

Wayne will share what he's learned about managing his farm for soil health and using small grains as a profitable alternative to low margins in a conventional corn-bean rotation. He will also discuss breaking up weed cycles without expensive herbicides, incorporating small grains into animal rations, advances in small-grains varieties and experimenting with hybrid rye.

## TOPICS:

PFI's small-grains cost-share

Oats in rations

Hybrid rye

No-till corn into red clover following oats

*Sponsored by:*

**ALBERT LEA SEED**

**GRAIN MILLERS INC.**

**WELTER SEED AND HONEY COMPANY**



## THE FARM:

Wayne Brunsman raises dairy heifers and diversified row crops on 280 acres in northeast Iowa. In 2006, he switched to 100% no-till. By eliminating tillage and incorporating cover crops and small grains into his rotation, he has improved his yields, lowered production costs, reduced weed pressure and improved soil health on his farm.

## DIRECTIONS:

**From Petersburg:** Take 160th Street / County Road C64 east for 3 miles to 330th Avenue / Co Rd X49 and turn left (north); the farm will be in 0.5 mile on the right.

**From New Vienna:** Go 2 miles west on Petersburg Road (the road curves and becomes 163rd Street). Turn right (north) on 330th Avenue / Co Rd X49 and go 0.75 mile.

# ON-FARM HABITAT MANAGEMENT FOR WILDLIFE AND WATER QUALITY

In partnership with Pheasants Forever

*Tuesday, JUNE 18*

5 – 8 p.m.

53998 Juniper Road

Lewis, IA 51544

*Host:* **BOB ZIMMERMAN**  
(712) 249-0337

A meal will be served at 8 p.m. following the field day. **RSVP for the meal to Debra Boekholder, [debra@practicalfarmers.org](mailto:debra@practicalfarmers.org) or (515) 232-5661, or online at [practicalfarmers.org/field-days](http://practicalfarmers.org/field-days), by Friday, June 14.**

Join Bob Zimmerman and biologists from Pheasants Forever as they discuss habitat restoration and management activities at the South Place farm. Topics will include: prairie restoration; habitat management using prescribed fire and other techniques; landowner-tenant relations and conservation; and the dual benefits of habitat for wildlife and water quality. Information on cost-share programs for conservation will also be available.

## TOPICS:

Establishing and managing habitat | Habitat and water quality | Prescribed fire | Landowner-tenant relations and conservation

## SPEAKERS:

**Nicholas Salick** – Pheasants Forever

**Kelsey Fleming** – Pheasants Forever

**Joshua Divan** – Pheasants Forever

*Sponsored by:*

**PRUDENTERRA**



## THE FARM:

Bob Zimmerman has been renting the South Place farm for 12 years. Most of the property was originally enrolled in the Conservation Reserve Program and planted to grasses like brome, but management is constantly evolving. Working with landowner Del Brehmer, and with Pheasants Forever, Bob has developed the 560-acre property into an oasis for wildlife. Together, they have restored a patchwork of nesting, rearing and winter cover that benefits a variety of wildlife species, as well as water quality. Bob and Del also host visitors of all kinds, using the property as a learning farm where people can come and see first-hand how conservation and habitat can be incorporated into the agricultural landscape.

## DIRECTIONS:

**From the east:** Take I-80 west to Exit 57 toward Atlantic / Cass County N16. Turn left (south) off the exit and go 6.5 miles to U.S. 6. Turn right (west) and follow U.S. 6 through Atlantic for about 5.5 miles. At Lansing Road, turn right and drive for about 4 miles. The buildings will be on the north side of Lansing Road at the intersection of Lansing Road, Juniper Road and 540th Lane.

**From Oakland:** Take U.S. 6 east for about 9.5 miles to 510th Street and turn left (north). Go 2 miles and turn right (east) on Juniper Road; continue for 3 miles. The buildings will be on the north side of Lansing Road at the intersection of Lansing Road, Juniper Road and 540th Lane.



# GRAZING NATIVE PERENNIALS IN THE LITTLE SIOUX WATERSHED

In partnership with The Nature Conservancy

*Wednesday, JUNE 19*

10 a.m. – 1 p.m.

377 440<sup>th</sup> St.

Peterson, IA 51047

*Hosts:* **JOHN ROCK**

Rock Cattle Company | (712) 390-0577

**AARON NELSON**

Nelson Farms

A meal will be served at the Buena Vista County Conservation Park following the field day.

**RSVP for the meal to Debra Boekholder, [debra@practicalfarmers.org](mailto:debra@practicalfarmers.org) or (515) 232-5661, or online at [practicalfarmers.org/field-days](http://practicalfarmers.org/field-days), by Friday, June 14.**

John and his cousin, Aaron, will discuss the benefits and challenges associated with grazing native perennials. Amy Crouch, an ecologist and Little Sioux project manager for The Nature Conservancy, will highlight the ecological benefits of managed grazing. With John and Aaron, she will also discuss conservation leasing issues associated with grazing conservancy-owned lands.

## TOPICS:

Grazing native perennials | Habitat and wildlife benefits of native perennial grazing systems | Pros and cons of conservation leases | Pasture regeneration using managed grazing | Forage-chain planning and integration | Beef marketing

## SPEAKER:

**Amy Crouch** – The Nature Conservancy

*Sponsored by:*

**FIRST COOPERATIVE ASSOCIATION**



## THE FARM:

John Rock and Aaron Nelson are cousins who farm and raise cattle in the Little Sioux watershed. Through their separate grazing operations, both John and Aaron lease ground owned by The Nature Conservancy. Under the current terms of these conservation-minded leases, John and Aaron graze cattle from May 15 through the end of June, controlling exotic cool-season grasses in TNC-restored prairie in the process.

John has been working to restore a native pasture that was 80% covered in eastern red cedars, and is using grazing to further restore native vegetation to the pasture. John also operates a small farm-to-freezer beef business that focuses on where the meat comes from and the high-quality forage the animals have consumed along the way.

## DIRECTIONS:

**Note:** GPS accurately steers you to the park. Park at the south shelter (by the main buildings) and then walk or take a hayride down to the fields.

**From Peterson:** Take IA Hwy 10 west for about 1 mile, turn left (south) on 110th Avenue / County Road M27 and go 3 miles (110th Avenue will turn into 20th Avenue). Turn left (east) onto Co Rd C13 / 440th Street and drive 1.2 miles, around the curve, and take the first right onto 440th Street. Go past the Timber Ridge campground entrance. The main park buildings will be on the left (north) side of the road.

# GREENHOUSE HYDROPONICS, SUCCULENTS AND HOUSEPLANTS

*Thursday, JUNE 20*

3 – 5 p.m.

204 S. Division St.

Boone, IA 50036

*Host:* **MIKE SALAMA**

Salama Greenhouse and Floral

(515) 432-4374 | [salama.mike@gmail.com](mailto:salama.mike@gmail.com)

[salamagreenhouse.com](http://salamagreenhouse.com)

Light refreshments will follow the field day.

Join Mike on a tour of his greenhouse to learn about growing hydroponic tomatoes and greens, and tips on harvest and packaging. Mike will also discuss his various potted plant offerings, including propagation, preferred media for different plants and container choices. The Salama family has also recently installed photovoltaic panels, and Mike will share information about the financing and installation process.

## TOPICS:

Greenhouse production

Plant propagation

Houseplants and succulents

Hydroponic lettuce and tomatoes

Photovoltaic solar panels

Contract seedling production



## THE FARM:

Salama Greenhouse and Floral is a two-generation, full-service florist and grower serving Boone and the surrounding communities with locally grown flowers, house plants, vegetables and bedding plants. In 2014, Mike Salama began growing hydroponic greens, tomatoes and cherry tomatoes, which he sells through grocery stores in Ames and Boone. Community and sustainability are important to the Salamas. Greenhouse dinners featuring local products and chefs have become popular events, and in 2018, the family installed 150kW of photovoltaic solar panels.

## DIRECTIONS:

**From U.S. 30:** Head north on S. Story Street (at the four-way stop signs on the highway). Drive for about 1 mile, then turn left onto Park Avenue. After 0.7 mile, turn right onto South Division Street. In 0.4 mile, the greenhouse will be on the right.

*Sponsored by:*

**IOWA FARMERS UNION**



# DIVERSIFIED CROP ROTATIONS AND COVER CROPS

*Thursday, JUNE 20*

5 – 8 p.m.

1320 IA Hwy 92

Keota, IA 52248

*Host:* **TIM SIEREN**

**Green Iron Farms**

(319) 560-9508 | [tesieren@gmail.com](mailto:tesieren@gmail.com)

We'll start with a meal provided by the Washington County Cattleman's Association and the Sieren family.

**RSVP for the meal to Debra Boekholder, [debra@practicalfarmers.org](mailto:debra@practicalfarmers.org) or (515) 232-5661, or online at [practicalfarmers.org/field-days](http://practicalfarmers.org/field-days), by Monday, June 17.**

This event will showcase a diversified farm with crop rotations, cover crops and livestock. Tim will speak about his crop rotation consisting of corn, soybeans and rye or wheat. Learn how this rotation presents opportunities for diverse cover crops (namely, legumes) and how Tim incorporates a small cattle herd and hog manure. We'll also view a couple of on-farm research trials investigating cereal rye cover crops for improving weed control in soybeans.

## TOPICS:

Diversifying crop rotations with small grains | Termination date for a cereal rye cover crop ahead of soybeans | Seeding a cereal rye cover crop in the spring before planting soybeans

*Sponsored by:*

**BLUE RIVER ORGANIC SEED**

**CONTINUUM AG**

**GREINER CROP SERVICE**

**WASHINGTON SOIL AND WATER CONSERVATION DISTRICT**



## THE FARM:

Green Iron Farms is a diversified crop and livestock family farm raising corn, soybeans, small grains, cattle and hogs. Since joining PFI's Cooperators' Program in 2013, Tim Sieren has been conducting trials on how to better incorporate cover crops, green manures and small grains into the operation.

## DIRECTIONS:

**Note:** Do not use Google Maps; it takes you to an address in Winterset.

**From West Chester:** The farm is 3 miles west of town on IA Hwy 92. The farm is on the north side of the road.

**From the junction of IA Hwy 77 and IA Hwy 92 south of Keota:** Go east on IA Hwy 92 for 4 miles. The farm is on the north side of the road.

# PUMPKINS AND PRODUCE IN ONE MULTIPURPOSE SPACE

*Friday, JUNE 21*

1 – 3 p.m.

2304 140<sup>th</sup> Ave.

Algona, IA 50511

*Hosts:* **BEANY BODE &  
JOANNE ROEPKE BODE**

Bode's Moonlight Gardens  
(515) 295-6060 | bodemoonlightgardens.com

Light refreshments will follow the field day.

Growing and expanding while staying small-scale is possible when farmers can lean on guidance and help from family members, mentors and friends. Beany and Joanne will share their experience designing and building a new multipurpose packhouse and prep space. They will also discuss weed management strategies they've tried in their 10-acre pumpkin patch. Beany and Joanne will be joined by neighbors and farm mentors John and Helen Scuffham, who introduced them to the wholesale pumpkin business and the growing and marketing techniques involved.

## TOPICS:

Packhouse design  
Farm mentoring  
Pumpkin production  
Weed management

*Sponsored by:*

**HEALTHY HARVEST OF NORTH IOWA  
IOWA FARMERS UNION  
IOWA FRUIT & VEGETABLE GROWERS ASSOCIATION**



## SPEAKERS:

**John and Helen Scuffham** – neighbors and farm mentors

## THE FARM:

Bode's Moonlight Gardens produces a wide range of naturally grown vegetables, and the occasional pet pig, on 1.5 acres that includes two high tunnels. Beany and Joanne are enjoying a recent addition to the farm: a new packhouse, prep area and germination room. The family markets produce at the Kossuth County Farmers Market and through a 75-member CSA.

With guidance from local farm mentors, Beany and Joanne added a wholesale pumpkin business and raise 10 acres of pumpkins that are sold and delivered across the state. The farm has grown by leaps and bounds since the spring of 2004, when Beany and Joanne broke ground on their first garden. Thanks to consistent help from family members, mentors and friends, this small-scale vegetable farm continues to grow and expand to meet the needs of local food customers.

## DIRECTIONS:

**From U.S. 169 north of Algona:** Turn right (east) onto U.S. 18. After 2.5 miles, turn left (north) onto 140th Avenue and go 1.5 miles; the farm will be on the right (east) side of the road.

# CONTROLLING WEEDS IN THE ROW FOR ORGANIC CROPS

In partnership with University of Northern Iowa

*Tuesday, JUNE 25*

10 a.m. – 1 p.m.

1869 Middle Ossian Road

Decorah, IA 52101

*Hosts:* **WAYNE & RYAN  
WANGSNESS & FAMILY**

Flying W Farm

(563) 517-0014 | [wcwangsness@gmail.com](mailto:wcwangsness@gmail.com)

Lunch will be provided by Iowa Farm Bureau Federation. **RSVP for the meal to Debra Boekholder, [debra@practicalfarmers.org](mailto:debra@practicalfarmers.org) or (515) 232-5661, or online at [practicalfarmers.org/field-days](http://practicalfarmers.org/field-days), by Friday, June 21.**

Managing weeds is one of the major production challenges for organic farmers. The weeds growing within the row can cause the biggest problem because they cannot be cultivated out. Wayne and Ryan have been flame-weeding for about 10 years, and they have used an electric weeder for the last three. They have been very pleased with both tools and invite farmers and the public to come learn from their experience. Guests will get to see two different flame-weeders, and hear how the Wangsnesses use electricity to deal with tall weeds like giant ragweed, pigweed and shattercane. Brian Lang, the northeast Iowa extension field agronomist with Iowa State University, will discuss current diseases and pests in organic systems.

*Sponsored by:*

**AGRICULTURAL FLAMING INNOVATIONS**

**BLUE RIVER ORGANIC SEED**

**FARM BUREAU AGENT TRAVIS FEICKERT**

**GRAIN MILLERS INC**

**IOWA FARMERS UNION**

**MOSA CERTIFIED ORGANIC**

**ORGANIC VALLEY - CROPP COOPERATIVE - ORGANIC PRAIRIE  
PIPELINE FOODS**

**THE WEED ZAPPER BY OLD SCHOOL MANUFACTURING**



## TOPICS:

Controlling weeds with electricity | Controlling weeds with fire | Diseases and pests in organic systems | Farming organically

## SPEAKER:

**Brian Lang** – ISU Extension and Outreach

## THE FARM:

The Wangsness farm is a certified organic family farm that raises corn, small grains, soybeans, trees, alfalfa and laying hens. Ryan, Wayne's son, is the fourth generation to farm this land and is transitioning into being the sole proprietor or partnering with his son.

## DIRECTIONS:

**From the intersection of U.S. 52 and IA Hwy 9 near Decorah:** Go east on IA Hwy 9 to the stop lights and turn left (north) onto Short Street. In 0.3 mile, turn right (south) on Division Street. In about 0.7 mile, Division Street becomes County Road W38 / Middle Calmar Road. Continue for about 5 miles to 195th Street and turn left (east). In 1.4 miles, you will come to a T-intersection; turn right (south) onto Middle Ossian Road. The farm will be on your right in 0.8 mile; look for the white-and-red hoop building.

**From Calmar:** Travel east on U.S. 52 for about 2 miles and turn left (north) on Middle Calmar Road. In 1.3 miles, turn right (east) on 177th Street and go 1.6 miles to the T-intersection. Turn left (north) on Middle Ossian Road. The farm will be on your left in 0.9 mile; look for the white-and-red hoop building.



# 30 YEARS OF SMALL GRAINS AND NO-TILL ON AN OHIO FARM

In partnership with Seneca County Conservation District

*Wednesday, JUNE 26*

6 – 8:30 p.m.

2765 N County Road 39

Fostoria, OH 44830

*Hosts:* **DAVID & ANN CRAMER**

Join us in beautiful Seneca County, Ohio, to hear from David Cramer, who has been no-tilling small grains on his family farm for over 30 years. We will cover agronomic advice and variety selection, and learn about incorporating cover crops into a small-grains operation.

## **TOPICS:**

Interseeded clover in wheat  
Cover crop mixes  
No-till



## **THE FARM:**

David Cramer is a lifelong Seneca County farmer. He graduated from The Ohio State University in 1982 with a degree in agricultural mechanization systems, then returned to the family farm as the fifth generation to farm the land. He currently farms 650 acres of grain using no-till practices, which he has practiced for more than 30 years.

## **DIRECTIONS:**

**From Fostoria:** Take W County Road 60 east for about 4 miles. The farm is at the intersection of Co Rd 60 and Co Rd 39.



# REGENERATING THE FAMILY FARM THROUGH DIVERSIFICATION

*Sunday, JUNE 30*

Noon – 3 p.m.

1206 150<sup>th</sup> St.

Castalia, IA 52133

*Hosts:* **CAITE & JIM PALMER**

Prairie's Edge Farm

prairiesedgeiowa@gmail.com

prairiesedgeiowa.com

facebook.com/PrairiesEdgeFarm

Instagram: @prairiesedgeiowa

Caite and Jim will provide lunch starting at noon.

**RSVP for the meal to Debra Boekholder,**  
**debra@practicalfarmers.org or (515) 232-5661,**  
**or online at practicalfarmers.org/field-days,**  
**by Thursday, June 27.**

As Caite and Jim looked at ways to make their farm self-sustaining, they decided to move toward grass-fed livestock. The gentle hills of the Driftless Region in northeast Iowa mean that most of their acreage is far more suitable for pasture than row crops. Tour the farm and see how they are raising a cow-calf herd, and a herd of Katahdin ewes and lambs, on pasture supplemented by farm-raised grain. Jim will lead a tour of his Allis-Chalmers farm equipment collection.

## **TOPICS:**

Pasture-raised beef and lamb

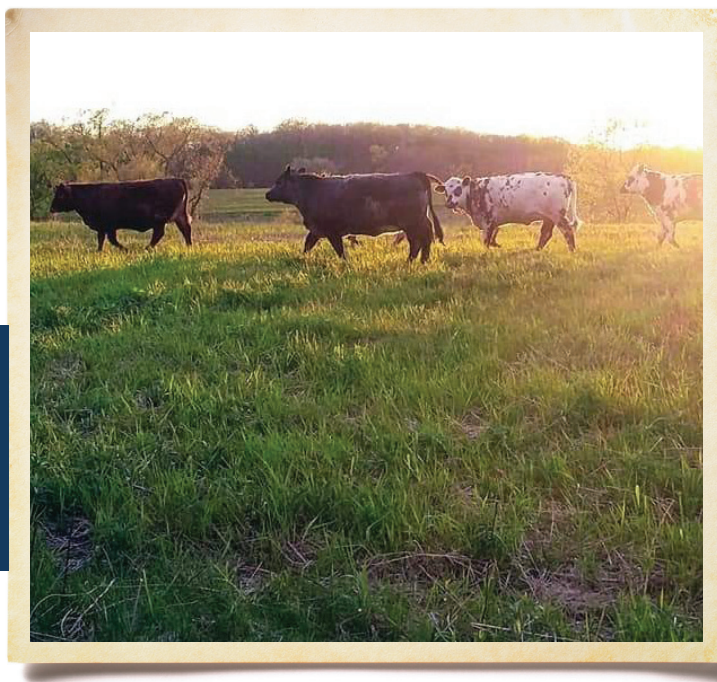
Farm transfer

Marketing grass-fed beef and lamb

Allis-Chalmers machinery

*Sponsored by:*

**DECORAH BANK & TRUST CO.**



## **THE FARM:**

Caite and Jim are taking over the family farm, started by Jim's great-grandparents in 1888. Now, they are farming in diverse ways to support their growing family. The Palmers started farming together in 2012 and began Prairie's Edge Farm in 2015 to direct-market meat to local customers.

## **DIRECTIONS:**

**From Decorah:** Take IA Hwy 9 east about 4 miles to Centennial Road and turn right (south). Go 8.5 miles and turn left (east) on 150th Street; Prairie's Edge Farm is the last farm on the left (north) side of the road.

**From Postville:** Go west 5.3 miles on U.S. 52 north to Castalia and turn right (north) on Centennial Road. Go about 2 miles, turn right (east) on 150th street and go 1.6 miles; Prairie's Edge Farm is the last farm on the left (north) side of the road.

# COVER CROPS WITH PURPOSE: WEED SUPPRESSION, SOIL HEALTH AND UNEXPECTED BENEFITS

In partnership with University of Northern Iowa

*Tuesday, JULY 2*

10 a.m. – 1 p.m.

1673 Market Ave.

Galva, IA 51020

*Hosts:* **SAM & DANIELLE  
BENNETT & FAMILY**

Bennett Farms

(712) 371-2790 | [sam@bennettwoodworks.com](mailto:sam@bennettwoodworks.com)

Lunch will be provided.

**RSVP for the meal to Debra Boekholder,**  
[debra@practicalfarmers.org](mailto:debra@practicalfarmers.org) or (515) 232-5661,  
or online at [practicalfarmers.org/field-days](http://practicalfarmers.org/field-days),  
by Friday, June 28.

Learn about the benefits and challenges of diversifying your farm with cover crops, small grains and extended rotations. Sam and Danielle will share their experience using cover crops as part of their weed control system. They will also discuss growing small grains, soil health and navigating crop insurance and Natural Resources Conservation Service programs. Guests will have a chance to see cereal rye and oats just before harvest, and evaluate the weed-suppressing benefits of cover crops before soybeans.

## **SPEAKER:**

A representative from the Ida Grove NRCS service center

*Sponsored by:*

**FARM CREDIT SERVICES OF AMERICA  
GRAIN MILLERS INC  
PIPELINE FOODS  
QUAD COUNTY CORN PROCESSORS**



## **TOPICS:**

Cover crops for weed control | Reducing herbicide use while maintaining yield | Delayed cover crop termination | Cover crop risk management  
Growing small grains in extended rotations

## **THE FARM:**

Sam and Danielle Bennett farm a third of the Bennett family's 2,000-acre operation that raises corn, soybeans and small grains. They use cover crops, no-till and strip-till to work toward their goals that include improving soil health, conservation, nutrient management, water quality and creating habitat.

## **DIRECTIONS:**

**From Holstein:** Go east on U.S. 20 for about 6.5 miles to Market Avenue / Co Rd M25 and turn right (south); the farm is in 1 mile on the right (west) side of the road.

**From the east on U.S. 20:** Market Avenue / Co Rd M25 is one-eighth of a mile west of the Quad County Corn Processors ethanol plant. Turn left (south) onto Market Avenue / Co Rd M25 and go 1 mile; the farm is on the right (west) side of the road.

**From the junction of U.S. 59 and IA Hwy 175 east of Ida Grove:** Go east on IA Hwy 175 for 1 mile to Market Avenue / Co Rd M25 and turn left (north). Continue on Market Avenue / Co Rd M25 for 8.8 miles; the farm is on the left (west) side of the road.

# BEGINNING AND ASPIRING FARMER BUS TOUR

*Tuesday, JULY 2*

10 a.m. – 5 p.m.

1615 Golden Aspen Drive  
Ames, IA 50010

This tour is intended for aspiring farmers – those who want to farm in the future – and beginning farmers who have been farming for five years or less.

Lunch will be provided by the Morning Glory Food Truck.

**The event is free, but seating is limited.**

**To register, contact Debra Boekholder, [debra@practicalfarmers.org](mailto:debra@practicalfarmers.org) or (515) 232-5661, or sign up online at [practicalfarmers.org/field-days](http://practicalfarmers.org/field-days), by Friday, June 21.**

Hop on the bus with other beginning and aspiring farmers to tour and learn from three different horticulture farms in the greater Iowa City area. Each farm on the tour is a trainer farm in PFT's Labor4Learning program, providing aspiring farmers with employment and additional training on how to run a farm business. Grow your peer network while touring three unique farms and learning about specific business management practices at each one.

## HOSTS:

*Emma and Marcus Johnson*

**Buffalo Ridge Orchard** | **Topic:** Enterprise budgets

*Donna Warhover*

**Morning Glory** | **Topic:** Task management for employees and volunteers

*Derek Roller*

**Echollective Farm** | **Topic:** Scaling up



## DETAILS:

**Ames Departure:** The bus will leave at 7:30 a.m. from Practical Farmers of Iowa's office (1615 Golden Aspen Drive, Suite 101).

**Central City Pick-Up Location:** Those in eastern Iowa are welcome to meet us at Buffalo Ridge Orchard (1337 Rollins Road), our first stop on the tour. We'll listen to the program there, then you can hop on the bus to finish the tour.

**Return:** We will return to Buffalo Ridge Orchard by 5 p.m. to drop off eastern Iowa guests, and will get back to Ames by about 7:30 p.m.

## THE FARMS:

**Buffalo Ridge Orchard** was started with the first planting of apple trees in 2003. This marked the transition from a conventional grain farm to one producing local fruits and vegetables. In addition to their high-density apple orchard, the Johnsons grow pears and vegetables for different CSA options, farmers markets and direct wholesale. They raise produce in two moveable high tunnels, and in 2019, added a new packing shed and farm store.

**Donna and Bill Warhover** launched their farm, Morning Glory, in 2013. They grow vegetables and herbs, and host community and learning events throughout the year. Donna and Bill market their produce through a CSA, farmers markets, restaurants and the food service industry. New this year, they have added a food truck serving food grown on the farm.

**Derek Roller** began Echollective farm as a small garden in 2000, and has since expanded to 51 acres producing vegetables, fruits, herbs and flowers. Products are marketed through a CSA, local restaurants, farmers markets and retail outlets. Flowers are grown for local florists, and seed garlic is sold across the northern United States.



# FARMLAND OWNER LEGACY AWARD + ON-FARM CONSERVATION EVENT

*Wednesday, JULY 10*

5 – 8 p.m.

300 NW 158<sup>th</sup> Ave.

Slater, IA 50244

*Host:* **LEE TESDELL**

Tesdell Century Farm

(515) 201-6454 | [lee.tesdell@gmail.com](mailto:lee.tesdell@gmail.com)

The event will start with supper, featuring tacos from Victor's Mexican Restaurant in Huxley.

**RSVP for the meal to Debra Boekholder, [debra@practicalfarmers.org](mailto:debra@practicalfarmers.org) or (515) 232-5661, or online at [practicalfarmers.org/field-days](http://practicalfarmers.org/field-days), by Friday, July 5.**

Lee Tesdell is Practical Farmers' 2019 Farmland Owner Legacy Award recipient. This award is granted annually to landowners who help the next generation get started, advance land stewardship and promote long-term sustainability of farm businesses, environmental quality and rural communities. Lee and guest speakers will discuss conservation and solar energy generation, and Lee will receive the Farmland Owner Legacy Award at this field day.

## TOPICS:

In-field and edge-of-field conservation practices | Photovoltaic solar energy generation | Using drone imagery for conservation | Integrating prairie strips

## SPEAKERS:

**Amanda Brown** – Polk County Natural Resources Conservation Service

**Tim Youngquist** – Iowa State University prairie STRIPS project

**Lisa Schulte Moore** – ISU Department of Natural Resource Ecology and Management

**Adam Kiel** – Iowa Soybean Association Environmental Programs and Services

**Charles Helland** – farms Lee's land with brother, Mike

**Mike Helland** – farms Lee's land with brother, Charles

**Todd Hammen** – Iowa Energy Alternatives

**Thomas Fawcett** – Heartland Co-op



## THE FARM:

Lee Tesdell owns Tesdell Century Farm, which has been in his family since 1884. He works with his tenants, Charles and Mike Helland – who raise row crops on 60 acres – to address soil conservation and water quality issues by implementing both edge-of-field and in-field practices. Lee uses the web-based People in Ecosystems/Watershed Integration tool, developed by ISU, as an assessment and planning tool for their conservation efforts. He also raises 5 acres of sheep hay, and the rest of the farm consists of buffers along Alleman Creek (Four Mile Creek watershed) and a waterway.

## DIRECTIONS:

**From the north on I-35:** Take Exit 102 and turn right (west) onto IA Hwy 210. After 1.5 miles, turn left (south) onto U.S. 69. After 2 miles, turn right (west) onto NE 158th Avenue; drive 1.1 miles and look for the stucco house with white buildings.

**From the south on I-35:** Take Exit 96 and turn left (west) onto NE 126th Avenue. Drive 1.5 miles to U.S. 69 / Ankeny Boulevard; turn right (north). Drive 4 miles north and turn left (west) onto NE 158th Avenue. Drive 1.1 miles and look for the stucco house with white buildings.

*Sponsored by:*

**ALBERT LEA SEED**

**CENTRAL IOWA WMA WQI PROJECT**

**IOWA AGRICULTURE WATER ALLIANCE**

**IOWA FARMERS UNION**

**PRUDENTERRA**

# MAKING AN ORCHARD WORK IN IOWA

*Thursday, JULY 11*

2 – 5 p.m.

1998 Poplar Ave. NE

Solon, IA 52333

*Hosts:* **PAUL RASCH &  
SARA GOERING**

Wilson's Orchard

wilsonsorchard@gmail.com

Light refreshments will follow the field day.

Beginning with the cider apples, Paul will discuss his approach to managing these unique varieties in a dwarf system, including the importance of managing to prevent fire blight. After the group caravans to the main orchard location, Paul will lead an orchard walk and further discuss varieties, orchard care and managing a U-pick operation. The group will then tour the cidery and event center, and have a chance to enjoy samples.

## TOPICS:

Cider-specific apple variety production

Dwarfing rootstocks

Equipment for orchard management

U-pick with dwarf and semi-dwarf trees

On-farm sales

Hard cider production

*Sponsored by:*

IOWA FARMERS UNION

ISU EXTENSION AND OUTREACH FARM, FOOD AND ENTERPRISE DEVELOPMENT PROGRAM



## THE FARM:

Paul Rasch and Sara Goering took ownership of Wilson's Orchard north of Iowa City in 2009. The orchard was established in 1982 and operates as a U-pick with over 120 varieties to choose from, a bakery and a retail store. In 2017, Paul and Sara added Rapid Creek Cidery, an event center and farm-to-table restaurant. Paul began crafting hard cider in September 2015 and produces seven styles of hard cider that can be found across the state. In 2016, he and Sara planted 5 acres of cider-specific apple varieties at their second orchard site.

## DIRECTIONS:

**From IA Hwy 1 in Solon:** Turn west onto 180th Street NE / 5th Street. After 2.3 miles, keep left at the fork as the road bends to the south and becomes Mehaffey Bridge Road NE. Continue on this for 1.2 miles, turn left (east) onto 200th Street and go 1 mile to the T-intersection with Poplar Avenue NE; the orchard and a grey pole barn with red roof will be visible across the road. Take the left fork leading up to the T-intersection, but immediately turn right into the driveway nearest the packing shed.

# GROWING VEGETABLES FOR YOUR RURAL COMMUNITY

*Tuesday, JULY 16*

4 – 6 p.m.

23719 Hazel Road

Elkport, IA 52044

*Hosts:* **PETE KERNS &  
NATASHA HEGMANN**

**Turkey River Farm**

(563) 245-1006 | [natasha.hegmann@gmail.com](mailto:natasha.hegmann@gmail.com)

[facebook.com/TurkeyRiverFarm](https://facebook.com/TurkeyRiverFarm)

A potluck will follow the field day at the Deep Mountain Retreat Center. Pete and Natasha will provide a main dish; please bring a dish to share.

**RSVP for the meal to Debra Boekholder, [debra@practicalfarmers.org](mailto:debra@practicalfarmers.org) or (515) 232-5661, or online at [practicalfarmers.org/field-days](https://practicalfarmers.org/field-days), by Friday, July 12.**

When Pete and Natasha started their farm, they drew upon their background in farm-to-school work to inform the business' community-based mission. Tour the farm and see how their business plan guides their farm activities, including production for their 30-member rural CSA. Pete and Natasha will discuss how they market to rural communities. They will also share some education and outreach projects they've used to promote cooking with and eating vegetables in Iowa.

## **TOPICS:**

Marketing vegetables in rural communities  
Customer outreach and education  
Business planning for decision-making

*Sponsored by:*

**BEAUTIFUL LAND PRODUCTS**

**IOWA FARMERS UNION**

**SUSTAINABLE IOWA LAND TRUST (SILT)**



## **THE FARM:**

Pete and Natasha raise vegetables, pasture-raised pork, mushrooms and maple syrup. They sell their products through their CSA and a local farmers market. They operate Turkey River Farm on ground they rent from a non-profit group.

## **DIRECTIONS:**

**From Elkader:** Take IA Hwy 13 south and go 1.7 miles to Grandview Road. Turn left (east), go 3.3 miles and turn left (east) on Hazel Road; the farm will be on the left (north) side of road in 1.5 miles.



# SOIL HEALTH AND WATER QUALITY WORKSHOP

In partnership with Grundy County Soil and Water Conservation District

*Wednesday, JULY 17*

9 a.m. – 1:30 p.m.

Grundy County Fairgrounds

1308 4<sup>th</sup> St.

Grundy Center, IA 50638

Farmers, landowners and city dwellers can all learn something about how to incorporate conservation practices onto their land from a panel of experts.

Lunch will be provided.

**RSVP to Denise Freese**man, Grundy County SWCD, at [denise.freese@ia.nacdnet.net](mailto:denise.freese@ia.nacdnet.net) or (319) 824-3634, ext 3, by Wednesday, July 10.

Learn about building soil health practices into farm leases, edge-of-field practices and prairie strips and how townspeople can play a role in conservation efforts. The event will also feature a hands-on soil health discussion.

## TOPICS:

Landowner-tenant collaboration  
Relay cropping  
Edge-of-field practices  
Prairie strips  
Urban conservation  
Soil health

## SPEAKERS:

**Mark Thompson** – Sunderman Farm Management

**Brian Dougherty** – ISU Extension

**Lisa Schulte Moore** – ISU Department of Natural Resource Ecology and Management

**Paul Miller** – Iowa Department of Agriculture and Land Stewardship

**Michael Lubbers** – Butler County Soil and Water Conservation District



## DIRECTIONS:

**Please note:** There will be areas roped off, so follow the gravel road to the north of the fairgrounds over to the parking area.

**From the intersection of IA Hwy 14 and IA Hwy 175 in Grundy Center (near Rouse Motor):** Go south 5.5 blocks on 4th Street; the fairgrounds will be on the left. The event will be held in the Alumni Building near the cattle barns.

## EVENT QUESTIONS:

**Fred Abels:** (319) 640-2002  
[farmerfred1981@hotmail.com](mailto:farmerfred1981@hotmail.com)  
[grundyiaswcd.com](http://grundyiaswcd.com)  
Twitter: @abelsfred

# THANK YOU TO OUR



**IOWA STATE UNIVERSITY**  
Extension and Outreach  
**Iowa Beef Center**

**WALLACE CHAIR**  
for Sustainable Agriculture



*CENTER for RURAL AFFAIRS*



**COVER CROPS**  
*OUR ROOTS RUN DEEP*



**WELTER SEED & HONEY CO.**

17724 Hwy. 136  
Onslow, IA 52321-7549  
(800) 470-3325  
[www.welterseed.com](http://www.welterseed.com)

# LEVEL B SPONSORS!





# PRAIRIE AND BENEFICIAL INSECT HABITAT ON AN ORGANIC CROP FARM

In partnership with Xerces Society

*Wednesday, JULY 17*

**10 a.m. – Noon**

**6190 470<sup>th</sup> St.**

**Sutherland, IA 51058**

*Hosts:* **PAUL & KAREN MUGGE**

(712) 446-2414 | pmugge@midlands.net

Lunch will be provided from noon to 1 p.m.

**RSVP for the meal to Debra Boekholder, [debra@practicalfarmers.org](mailto:debra@practicalfarmers.org) or (515) 232-5661, or online at [practicalfarmers.org/field-days](http://practicalfarmers.org/field-days), by Friday, July 12.**

For crop farmers interested in native insect pest predators and habitat that supports them, this field day is a must-attend. Paul will lead guests on a tour of prairie and habitat areas on his farm, and discuss the why and how of installing and managing prairie and habitat. Sarah Foltz Jordan and Lydia English will provide insight from their work at Paul's farm and others. Throughout the day, attendees will learn to identify some insects, prairie forbs and grasses.

## **TOPICS:**

Preventing erosion | Prairie seeding and management | Beetle bank installation and management | Controlled burning | Beneficial insects in organic crops | Plant and insect ecology and identification

*Sponsored by:*

**AGRICULTURAL FLAMING INNOVATIONS**

**AGRISECURE LLC**

**BLUE RIVER ORGANIC SEED**

**IOWA FARMERS UNION**

**IOWA ORGANIC ASSOCIATION**

**ORGANIC VALLEY - CROPP COOPERATIVE - ORGANIC PRAIRIE PIPELINE FOODS**

*\*Note:* This field day is the morning portion of a two-part field day the Mugges are hosting that is joined by a shared lunch (the second part will explore organic row crop production and mechanical weed control; see pg. 33 for details). Attendees are invited to attend one or both field days.



## **SPEAKERS:**

**Sarah Foltz Jordan** – Xerces Society

**Lydia English** – Iowa State University

## **THE FARM:**

Paul and Karen farm 300 acres of certified organic crops. Their rotation consists of corn, soybeans, small grains and some legumes. Fall triticale is the current small-grains species in the rotation. The farm has been certified organic since 2001. In addition to organic crop ground, the Mugges' farm has a mature, 17-year-old restored prairie, prairie strips established in 2015 and a new beetle bank installed with Xerces Society in 2018.

## **DIRECTIONS:**

**From Sutherland:** Take Exit 102 and turn right (west) onto IA Hwy 210. After 1.5 miles, turn left (south) onto U.S. 69. After 2 miles, turn right (west) onto NE 158th Avenue; drive 1.1 miles and look for the stucco house with white buildings.

**From the south on I-35:** Take IA Hwy 10 for 3 miles west (it becomes U.S. 59). The farm will be on the right (north) side of the road, just past Taft Avenue.

# ORGANIC ROW CROP PRODUCTION AND MECHANICAL WEED CONTROL

In partnership with University of Northern Iowa

*Wednesday, JULY 17*

**1 – 3 p.m.**

**6190 470<sup>th</sup> St.**

**Sutherland, IA 51058**

*Hosts:* **PAUL & KAREN MUGGE**

(712) 446-2414 | [pmugge@midlands.net](mailto:pmugge@midlands.net)

Lunch will be provided from noon to 1 p.m.  
**RSVP for the meal to Debra Boekholder,**  
[debra@practicalfarmers.org](mailto:debra@practicalfarmers.org) or (515) 232-5661,  
or online at [practicalfarmers.org/field-days](http://practicalfarmers.org/field-days),  
by Friday, July 12.

Paul will share his approach to successfully raising crops and managing weeds in an organic production system. Keys to success include crop rotations, mechanical cultivation and cover crops. This field day is appropriate for farmers considering a transition to organic production, as well as beginning and experienced organic growers.

## **TOPICS:**

Extended crop rotations  
Small grains and clover cover crop  
Machinery for weed control  
Flame cultivator

## *Sponsored by:*

**AGRICULTURAL FLAMING INNOVATIONS**  
**AGRISECURE LLC**  
**BLUE RIVER ORGANIC SEED**  
**IOWA FARMERS UNION**  
**IOWA ORGANIC ASSOCIATION**  
**ORGANIC VALLEY - CROPP COOPERATIVE - ORGANIC PRAIRIE**  
**PIPELINE FOODS**

**\*Note:** This field day is the afternoon portion of a two-part field day the Mugges are hosting that is joined by a shared lunch (the first part will explore prairie and beneficial insect habitat on an organic farm; see pg. 32 for details). Attendees are invited to attend one or both field days.



## **THE FARM:**

Paul and Karen farm 300 acres of certified organic crops. Their rotation consists of corn, soybeans, small grains and some legumes. Fall triticale is the current small-grains species in the rotation. The farm has been certified organic since 2001. In addition to organic crop ground, the Mugges' farm has a mature, 17-year-old restored prairie, prairie strips established in 2015 and a new beetle bank installed with Xerces Society in 2018.

## **DIRECTIONS:**

**From Sutherland:** Take Exit 102 and turn right (west) onto IA Hwy 210. After 1.5 miles, turn left (south) onto U.S. 69. After 2 miles, turn right (west) onto NE 158th Avenue; drive 1.1 miles and look for the stucco house with white buildings.

**From the south on I-35:** Take IA Hwy 10 for 3 miles west (it becomes U.S. 59). The farm will be on the right (north) side of the road, just past Taft Avenue.



# COMMERCIAL HAIR SHEEP PRODUCTION ON PASTURE

*Friday, JULY 19*

**10 a.m. – 1 p.m.**

**19415 15<sup>th</sup> St.**

**Blakesburg, IA 52536**

*Host:* **BART VERELLEN**

**Apple Creek Farm**

(641) 856-9500 | [applecreekiowa.com](http://applecreekiowa.com)

Boxed lunches will be catered by Lucile's, a restaurant located in Centerville's Continental Hotel.

**RSVP for the meal to Debra Boekholder, [debra@practicalfarmers.org](mailto:debra@practicalfarmers.org) or (515) 232-5661, or online at [practicalfarmers.org/field-days](http://practicalfarmers.org/field-days), by Tuesday, July 16.**

Bart and Trish started raising hair sheep four years ago, and now their flock has grown to 420 ewes. Learn how Bart manages spring lambing and rotational grazing with electric netting and the help of five guard dogs. Bart will discuss how he supplements grain and bale-grazes on old crop ground, how parasites are managed and how he's developed a specific mineral program. We'll also discuss fattening Easter lambs and marketing through the Kalona Sales Barn and Kirksville Livestock Market. This field day will serve as an introduction to hair sheep for beginning farmers or those who are looking to scale up.

*Sponsored by:*

**PREMIER 1 SUPPLIES**



## **TOPICS:**

Late-spring lambing for the following year's Easter markets  
Two-day pasture rotations  
Personalized mineral program  
Livestock guardian dogs and coyote coexistence

## **THE FARM:**

Bart raises sheep on 188 acres rented from John and Shirley Waite, whom he met through Practical Farmers of Iowa's FindAFarmer land-matching website. They are working together to transform the farm from conventional cropland to a forage-based livestock enterprise. Bart and his wife, Trish, live in Centerville and have off-farm jobs, but are working towards farming full-time.

## **DIRECTIONS:**

**From Blakesburg:** Turn right (south) on Adams Road and go 1.5 miles. Turn right (south) to stay on Adams Road and continue for another 2 miles; Adams Road turns into 30th Street. Go 3.5 miles and make a sharp right (south) on 189th Avenue, then drive 1.5 miles; the road will turn into 15th Street. The farm is in 0.3 mile on the right (north) side of the road. Google Maps works.



# RAGBRAI AT HOWELL'S GREENHOUSE AND PUMPKIN PATCH

*Tuesday, JULY 23*

8 a.m. – Noon

3145 Howell Court

Cumming, IA 50061

*Host:* **FRED HOWELL**

Howell's Greenhouse and Pumpkin Patch

Fresh fruit and local veggies will be served, and a water refill will be available.

Join us for this annual celebration of cycling and community! On Day 3 of this year's ride, RAGBRAI riders will be greeted with fresh fruit and veggies, a water refill station and cheers from Practical Farmers of Iowa when they bike through the RAGBRAI "oasis" at Howell's Greenhouse and Pumpkin Patch.

## EVENT QUESTIONS:

**Debra Boekholder:** (515) 232-5661

[debra@practicalfarmers.org](mailto:debra@practicalfarmers.org)



## THE FARM:

Howell's Greenhouse and Pumpkin Patch is part of the six-generation Howell Farm, which covers 800 acres near Cumming. Fred Howell, his wife, Cindy, and their three children have a diversified farm that includes more than 5 acres of flowers for dried arrangements, a pumpkin patch, corn maze, retail garden center, gift shop and plenty of family- and child-friendly activities, including school tours and goat yoga.

## DIRECTIONS:

**Directions for cyclists:** Cyclists will head north out of Winterset on U.S. 169, then travel east on County Road G4R / Cumming Road for 16 miles to the "Iowa Ag Oasis" – refreshment stops along the ride when there is a long stretch between towns – at Howell's Greenhouse and Pumpkin Patch.

# ONE FAMILY'S VISION FOR AGROFORESTRY IN IOWA

In partnership with the Savanna Institute

*Saturday, AUG. 3*

10 a.m. – 2 p.m.

13602 NE 96<sup>th</sup> St.

Maxwell, IA 50161

*Host:* **BRUCE CARNEY**

Carney Family Farms  
(515) 202-7326

Lunch will be provided by the Carney family.  
**RSVP for the meal to Debra Boekholder,**  
[debra@practicalfarmers.org](mailto:debra@practicalfarmers.org) or (515) 232-5661,  
or online at [practicalfarmers.org/field-days](http://practicalfarmers.org/field-days),  
by Wednesday, July 31.

Bruce Carney plants trees in his pastures to provide shade for livestock, but also to grow fruits and nuts as an extra farm enterprise that supports the family's next generation of farmers. We'll see recently established trees growing along an installed swale that winds through grazing paddocks. We'll also travel down the road to a once-overgrown wooded farmstead where Bruce has used cattle, sheep, goats, a brush mower and herbicides to clear invasive species in order to promote forage growth. The combination of trees, pasture and grazing livestock is called silvopasture, which is a facet of agroforestry. Keefe Keeley from the Savanna Institute will speak on the costs and benefits of agroforestry on Midwestern farms. Luke Gran from Prudenterra will discuss Bruce's forestry plan, and Clint Miller from Polk County Natural Resources Conservation Service will speak on cost-share opportunities for agroforestry practices.

*Sponsored by:*

**GREEN COVER SEED  
IOWA FARMERS UNION  
PRUDENTERRA**



## TOPICS:

Adding trees to pasture and thinning woodlands to promote forage growth | Optimal forage mixes for silvopasture with cattle, sheep and goats | Tree fodder and coppicing | Adding diverse enterprises | Transferring land to the next generation

## SPEAKERS:

**Keefe Keeley** – Savanna Institute

**Luke Gran** – Prudenterra

**Clint Miller** – Polk County NRCS

## THE FARM:

Bruce and Connie Carney work with their next generation of farmers – Amber, Jared and Derek – to produce and direct-market grass-fed and -finished cattle, hair sheep, pigs and poultry. Carney Family Farms is located on 300 acres of pasture that was once corn and soybean ground in central Iowa.

## DIRECTIONS:

**Note:** The Carneys suggest using GPS, making the farm easy to find.

**From I-35:** Take Exit 96 toward Elkhart / Polk City and turn east on NE 126th Avenue toward Elkhart. Go 5.6 miles, through Elkhart, to the T-Intersection and turn left (north) onto NE 72nd Street / NE Yoder Drive. Follow the curves in the road for about 1 mile; it will turn into NE 134th Avenue. Go 2.4 miles and turn left (north) onto NE 96th Street; look for the first house on the west side of the road.

# NEXT GENERATION SUMMIT

*Sunday, AUG. 4*

1:30 – 5:30 p.m.

Veterans Reception Center

910 Main St.

Van Meter, IA 50261

Through workshops and networking, this **FREE** event brings beginning and retired farmers together in a meaningful way to address the challenge of farmland access.

To register: Contact Debra Boekholder, [debra@practicalfarmers.org](mailto:debra@practicalfarmers.org) or (515) 232-5661, or sign up online at [practicalfarmers.org/field-days](http://practicalfarmers.org/field-days), by Wednesday, July 31.

The summit includes two workshops aimed at helping farmland owners and beginning and aspiring farmers develop a plan to fulfill their farm visions. Farmland owners will work on setting goals that can help them move toward a farmland legacy reflecting their values. They will also learn how to take the next steps to start the transition process when the time is right. Beginning and aspiring farmers will walk through the process of determining their farming purpose and planning the next steps. The event will also feature many opportunities for conversation and networking.

## EVENT QUESTIONS:

**Greg Padget:** (515) 232-5661  
[greg@practicalfarmers.org](mailto:greg@practicalfarmers.org)



## DIRECTIONS:

**From I-80:** Take Exit 113 toward Van Meter / Dallas County travel south on R Avenue / Veterans Memorial Drive and go for about 1 mile (the road turns into Mill Street). Turn left (east) on Main Street; the reception center will be on your right.



# SOIL HEALTH SMORGASBORD FOR FARMERS + FAMILY LEARNING EVENT

In partnership with Iowa Seed Corn Cover Crops Initiative, which is a project of the Iowa Seed Association, and Benton/Tama Nutrient Demonstration Project

*Tuesday, AUG. 6*

2 – 7 p.m.

2943 Hwy D65

Buckingham, IA 50612

*Host:* **ADAM NECHANICKY**

A meal will be served at 5 p.m.

This hands-on field day will occur in two phases. From 2–5 p.m., farmers and producers will learn about soil health principles, including strip-tillage, grazing cover crops and interseeding in 60-inch rows. The community is invited to join in for a meal at 5 p.m. Afterwards, children and parents can visit various stations on the farm to learn about steps local farmers are taking to protect water quality and soil health.

## TOPICS:

Five principles of soil health (slake test)  
Strip-till fertilizer placement  
Cover crops as forage for livestock  
Soil pit: hands-on demo  
Testing soil health via buried underwear  
Rainfall simulator and water infiltration demo  
Cover crop field demo: interseeding 60-inch rows, three mixes  
Microscope analysis of soil

## EVENT QUESTIONS:

**Shannon Moeller:** (641) 861-2280  
shannon.moeller16@gmail.com

**Stacie Buhr:** (319) 472-2161, ext 4045  
stacie.buhr@usda.gov



## THE FARM:

Adam Nechanicky farms with his family on land that has been in their family since 1902. They raise 760 acres of corn, seed corn, seed beans, hay and pasture – which Adam uses for the cow-calf herd he manages with his wife, Lindsey. He started using cover crops in 2013 and has tried multiple seeding methods since then.

## DIRECTIONS:

**From IA Hwy 21, on the south side of Waterloo:** Take IA Hwy 21 south for 13.5 miles, turn right (west) 130th Street / County Road D65 and go 2 miles.

# GROWING, GRADING, SELLING AND STORING CHESTNUTS

*Wednesday, AUG. 7*

1 – 3 p.m.

19417 120<sup>th</sup> St.

Columbus Junction, IA 52738

*Hosts:* **ROGER & KAY SMITH**

(563) 260-6333 | gsons3@aol.com  
prairiegrovechestnutgrowers.com

Light refreshments will follow the field day.

Curious about adding chestnuts to your farm? Do you have chestnuts planted and want to see a profitable operation? If either applies to you, attend this field day! Roger will discuss chestnut production, including tree and understory care; labor required during harvest; and proper handling and storage. He will also share his views on pricing and marketing, and Iowa's opportunity as an emerging leader in chestnut production.

**Note:** The field day will begin at Roger's orchard, and will conclude at Prairie Grove Chestnut Growers headquarters (106 Legion Road, Columbus Junction).



## THE FARM:

Roger Smith has been growing chestnuts for 16 years, now raising 20 acres of nuts. In 2014, he created the Prairie Grove Chestnut Growers cooperative to give Midwest family farms that are growing chestnuts a ready and reliable market. In 2018, Roger bought, sorted, bagged and sold over 84,000 pounds of fresh chestnuts grown on over 60 orchards in Iowa, Missouri and Illinois. The cooperative sells chestnuts all over the United States.

## DIRECTIONS:

**Note:** Follow the field days signs, as Google Maps may not be accurate.

**From Columbus City:** Head east on Columbus Street / County Road X37 and go about 3.5 miles. Turn left (east) onto 120th Street and go 1 mile; the farm will be on the right (south) side of the road.

# TRANSITION TO ORGANIC WITH DIVERSITY TO IMPROVE SOIL BALANCE

In partnership with University of Northern Iowa

*Wednesday, AUG. 14*

**10 a.m. – 2 p.m.**

**5086 Lily Ave.**

**Remsen, IA 51050**

*Hosts:* **ROBERT ALEXANDER  
& FAMILY**

**360 Heritage Farms**

**(515) 480-5424 | alexander@premieronline.net**

An organically-raised and homemade meal  
will be provided.

**RSVP for the meal to Debra Boekholder,  
debra@practicalfarmers.org or (515) 232-5661,  
or online at practicalfarmers.org/field-days,  
by Friday, August 9.**

Tour two on-farm research trials: planting corn  
in 60-inch row-widths for cover crops, and  
grazing sheep and spring-seeded cereal rye  
ahead of soybeans for weed control. You'll get to  
view equipment used for field preparation and  
organic crops. We will also discuss rotationally  
grazing sheep and cattle and how to make  
compost tea, and you'll have a chance to see a  
first-year elderberry planting.

## **TOPICS:**

Corn planted in 60-inch row-widths for interseeding  
cover crops | Spring-seeded cereal rye cover crop |  
Crop diversification and integrating livestock |  
Soil health: feeding the plant to feed soil life

*Sponsored by:*

**GRAIN MILLERS INC  
NUTRITIONAL AG  
SCOULAR**



## **SPEAKER:**

**Dennis Von Arb** – Nutritional Ag

## **THE FARM:**

Robert manages the family farm with help from his wife, April, and mother, Marilyn. The 160-acre diversified, organic farm will be a century farm in 2020. Robert grows corn, soybeans, hay and pasture. He also raises Belted Galloway cows and Dorper hair sheep, all grass-fed.

## **DIRECTIONS:**

**From Remsen:** At the junction of IA Hwy 3 and County Road L14 just east of town, go north on Co Rd L14 for 7 miles to 100th Street / 510th Street and turn right (east). Go 2 miles to Lily Avenue and turn left (north); the farm will be on the right (east) side of the road in 0.25 mile.

**From Granville:** At the junction of IA Hwy 10 and Marsh Avenue / Co Rd L22, go south on Marsh Avenue / Co Rd L22 for 5 miles to 100th Street / 510th Street and turn right (west). Go 2 miles to Lily Avenue and turn right (north); the farm will be on the right (east) side of the road in 0.25 mile.





# Rotationally Raised: MAKING SMALL GRAINS WORK *Conference*

*Thursday, AUG. 15 –  
Friday, AUG. 16*

Wintergreen Resort and  
Conference Center  
60 North Gasser Road  
Wisconsin Dells, WI 53965

Join us in the beautiful Wisconsin Dells to learn about growing small grains and the benefits of an extended rotation.

Registration is required for this conference. Register online at [practicalfarmers.org/events/small-grains-conference](http://practicalfarmers.org/events/small-grains-conference), or call (515) 232-5661, by Monday, August 12.

Free for PFI members; \$40 for non-members  
If you are not currently a member but would like to join Practical Farmers of Iowa, please visit [practicalfarmers.org](http://practicalfarmers.org) for membership information.

Twelve breakout sessions throughout the day will include sessions on integrating animals with a small-grains operation, marketing small grains, the agronomy behind successfully raising small grains and more. Visit the website listed above for more details including speaker and session information.

**Note:** Hotel rooms come with passes to Noah's Ark, America's largest water park, so bring your families! A block of rooms is being held for the nights of August 14-15 under Practical Farmers of Iowa. To get yours, call 802-648-4765 and press 1 for reservations. They will be held until July 20.



## **SCHEDULE:**

### **Thursday, August 15**

11 a.m. – Noon – Registration  
Noon – 1 p.m. – Lunch and plenary  
1:20 – 2:30 p.m. – Breakout sessions  
2:50 – 4 p.m. – Breakout sessions  
4 – 5:30 p.m. – Reception

### **Friday, August 16**

8:30 – 9:40 a.m. – Breakout sessions  
10 – 11:10 a.m. – Breakout sessions  
11:30 a.m. – 12:30 p.m. – Lunch and plenary

## **DIRECTIONS:**

Driving directions are available at [wintergreen-resort.com/directions](http://wintergreen-resort.com/directions).

## **EVENT QUESTIONS:**

**Alisha Bower:** (515) 232-5661  
[alisha@practicalfarmers.org](mailto:alisha@practicalfarmers.org)

# CULTIVATING FARM RESILIENCE FOR A CHANGING CLIMATE

*Friday, AUG. 16*

1 – 4:30 p.m.

1222 Ironwood Road  
Harlan, IA 51537

*Hosts:* **RON ROSMANN & MARIA VAKULSKAS ROSMANN, DAVID ROSMANN & BECKY TOMPKINS-ROSMANN, DANIEL ROSMANN & ELLEN WALSH-ROSMANN, MARK ROSMANN** (USDA Foreign Agricultural Service),  
Rosmann Family Farms & Farm Sweet Farm  
(712) 627-4653 | [ron.rosmann@gmail.com](mailto:ron.rosmann@gmail.com)  
[farmsweetfarmiowa.com](http://farmsweetfarmiowa.com) | [facebook.com/rosmannfamilyfarms](https://facebook.com/rosmannfamilyfarms)

A meal will follow the field day, with food provided by Milk & Honey and Rosmann Family Farms.

The Rosmanns use nature-based climate resilience practices on their diversified, organic livestock and crop farm. They will highlight how they work small grains into their field crop rotations and use cover crops for rotational grazing. They will also discuss their farrow-to-finish swine operation. Invited speakers for this field day will touch on resilient farm planning, water quality and cultivating community resilience.

## TOPICS:

Rotational grazing | Grazing cover crops | Small grains  
Organic crops | Organic livestock production

## *Sponsored by:*

**ALBERT LEA SEED**  
**BLUE RIVER ORGANIC SEED**  
**IOWA FARMERS UNION**  
**IOWA ORGANIC ASSOCIATION**  
**MIDWEST ORGANIC & SUSTAINABLE EDUCATION SERVICE (MOSES)**  
**ORGANIC VALLEY - CROPP COOPERATIVE - ORGANIC PRAIRIE**  
**PIPELINE FOODS**  
**RIVERSIDE FEEDS, LLC**



## SPEAKERS:

**Art Cullen** – Pulitzer Prize-winning editor of The Storm Lake Times

**Richard Cruse** – ISU Department of Agronomy

**Laura Lengnick** – Cultivating Resilience, LLC.

## THE FARM:

Rosmann Family Farms grows and markets diverse crops and livestock on 700 certified organic acres. The farm consists of cattle, hogs, egg layers and a range of crops, including popcorn, soybeans, corn, small grains, hay and pasture, annual forages and cover crops. Maria operates the farm store, Farm Sweet Farm. Ellen and Daniel operate FarmTable Delivery and a restaurant, Milk & Honey in Harlan, featuring local foods.

## DIRECTIONS:

**Note:** GPS or Google Maps may direct you to minimum-maintenance roads, which may be impassable during rainy conditions.

**From Harlan:** Go 2 miles west on IA Hwy 44 to Ironwood Road and turn right (north). Go 2.25 miles until you see the farm on the left (west) side of the road.

# U-PICK CUT FLOWERS: PRODUCTION AND MANAGEMENT

*Sunday, AUG. 18*

2 – 4 p.m.

27387 130<sup>th</sup> Ave.

Donahue, IA 52746

*Host:* **CATHY LAFRENZ**

Miss Effie's Country Flowers and Garden Stuff  
(563) 282-4338

Light refreshments will follow the field day.

When customers arrive at Miss Effie's, they are given a bucket and a pair of garden clippers, and fill a bucket with flowers, as full as they like, for one flat price. Cathy will give a tour of the 2-acre farm, discuss her methods for no-till flower farming and share how she manages a destination U-pick farm with excellent customer satisfaction. She will also discuss how the "structures" she has repurposed were created, like old corn cribs dubbed "corn-zebos" that are used as seating areas for farm visitors.

## TOPICS:

- No-till cut flower production
- Perennial and annual flowers
- Pollinator patch
- Managing a U-pick farm
- Agritourism
- "Structures" for customer seating and shade
- Customer service and enjoyment
- Heritage-breed laying hens



## THE FARM:

Cathy Lafrenz founded Miss Effie's Country Flowers and Garden Stuff in 2002. Miss Effie's is Iowa's first U-pick flower farm, featuring over 90 varieties of flowers. The farm also boasts a "Summer Kitchen" store, and eggs from 20 different breeds of chickens. Miss Effie's is a partner site of Silos and Smokestacks National Heritage Area.

## DIRECTIONS:

Miss Effie's is 2.5 miles east of the town of Donahue. From Donahue, head north out of town on N. Main Street / 115th Avenue. A half-mile after leaving town, turn right (east) onto 275th Street, go 1.5 miles and turn right (south) onto 130th Avenue. Miss Effie's is the first house on the left (east) side of the road.



# GRAZING COVERS CROPS AND BUILDING COMMUNITY 101

*Thursday, AUG. 22*

**1 – 4 p.m.**

**6795 Illinois Rte. 100**

**Frederick, IL 62639**

*Host:* **GREG REBMAN**

Rebman Farms

(217) 248-1664 | rebfarms@hughes.net

No meal will be served, but soft drinks and water will be available.

Learn how Greg Rebman and Luke Jones worked together to combine knowledge and skill sets, overcome challenges and develop a profitable contract grazing partnership. We will see a field of wheat underseeded with clover that is a part of PFI's small-grains cost-share program. Greg will also talk about the importance of supporting young farmers and cultivating healthy landowner-tenant relationships.

## **TOPICS:**

Growing small grains  
Contract grazing of cover crops  
Landowner-tenant relationships  
Diversified crop rotations and weed management  
Income versus yield  
Economic viability in rural communities

## **SPEAKER:**

**Luke Jones** – a farmer who has a contract grazing arrangement with Greg

*Sponsored by:*

**MIDWEST GRASS & FORAGE**

**SOUTH POLL GRASS CATTLE ASSOCIATION**

**WENGER AG SOLUTIONS**



## **THE FARM:**

Greg Rebman has been farming since 1977. He is passionate about soil health and building relationships with landowners and young farmers that will strengthen his rural community. Rebman Farms comprises 1,524 acres, including 124 acres of owned cropland, 80 acres of pasturelands and nine distinctly different farms with multiple landlords. Greg grows a diversified rotation that includes a small-grains crop, and he is working toward a system that is less reliant on farm chemicals.

## **DIRECTIONS:**

**To 6795 Illinois Route 100:** From Rushville, head east on E Adams Street / Old Route 67 and go about 6.5 miles; the road will turn into Market Street. Continue for 2.5 miles and turn right (west) on IL Route 100; you'll see Greg's white hoophouse on the left (south) side of the road.

**To the small grains field:** From the white hoophouse building in Frederick, travel east on IL Route 100 to the stop sign. Turn left (north) on SB 13 / Market Street, go 1.3 miles and turn right (east) on Boston Lane; continue for 0.5 mile, following the signage.

# MANAGING AN ORGANIC APPLE ORCHARD

*Saturday, AUG. 24*

10 a.m. – Noon

33130 Panther Creek Road

Adel, IA 50003

*Hosts:* **MAURY & MARY WILLS**

Wills Family Orchard

[willsfamilyorchard.com](http://willsfamilyorchard.com)

Apple cider doughnuts will begin the field day.

For information about organically managing apple trees – or an orchard of them – Maury is one of Iowa's best sources of knowledge. Maury will discuss the opportunities and challenges of growing organic apples, and on a smaller scale, peaches. Tour the apple handling facility, commercial kitchen and farm store. In addition to production information, the Wills will share how they slowly built their farm, and how their children fit into the operation.

## TOPICS:

Apple varieties and rootstocks

Scouting for pests and disease

Organic pest and disease management

Organic understory management

Deer fence

Peach production

Apple handling facility, kitchen and farm store

On-farm bird habitat

Building a family business

*Sponsored by:*

**IOWA FARMERS UNION**

**RINCON-VITOA INSECTARIES, INC**



## THE FARM:

Maury and Mary Wills own and operate Wills Family Orchard. They began planting trees and building their home in 1993, and have slowly expanded the organic apple and peach orchard while crafting homemade value-added products for their farm store. The Wills now have 5 acres of certified organic apple trees; 1 acre of certified organic peach trees; 5 acres of pumpkins, winter squash and ornamental gourds; and a 1-acre corn maze. Maury is also the bureau chief of Agricultural Diversification and Market Development, and program manager of the Organic Certification Program, at the Iowa Department of Agriculture and Land Stewardship.

## DIRECTIONS:

**From I-80:** Take Exit 106 toward Dallas County, and turn north onto L Avenue / County Road P58. Go 2.5 miles and turn left (west) onto E. Panther Creek Road (just after you cross Panther Creek). Follow Panther Creek Road for 1.6 miles, keeping right after 1 mile to turn due north when the road reaches a Y-intersection. In 0.6 mile, before Panther Creek Road turns back to the west, the orchard is on the east side of the road.

# ESTABLISHING POLLINATOR HABITAT AT SCATTERGOOD FRIENDS SCHOOL FARM

In partnership with Xerces Society

*Tuesday, SEPT. 17*

4 – 7 p.m.

258 290<sup>th</sup> St.

West Branch, IA 52358

*Host:* **MARK QUEE**

Scattergood Friends School Farm  
(319) 530-3782

Dinner will be served following the field day in the Scattergood Friends School cafeteria.

**RSVP for the meal to Debra Boekholder, [debra@practicalfarmers.org](mailto:debra@practicalfarmers.org) or (515) 232-5661, or online at [practicalfarmers.org/field-days](http://practicalfarmers.org/field-days), by Friday, Sept. 13.**

Come learn from Scattergood staff and students, as well as Xerces Society biologist Sarah Foltz Jordan, about the why, when, where and how of pollinator habitat design and installation. Mark and Sarah will address farmer concerns about weed control using organic methods. They will also discuss plugs versus seeds and habitat management. Sarah Nizzi, the NRCS partner biologist and farm bill pollinator conservation planner for Xerces Society, will join to offer insights about cost-share opportunities available through farm bill programs.

## TOPICS:

Beneficial insect habitat placement and design | Weed control and site preparation using organic methods | Insectary strip planting from plugs versus seed | Short- and long-term management | Ecological benefits of habitat | Native-plant tea garden

*Sponsored by:*

**BEAUTIFUL LAND PRODUCTS  
IOWA FARMERS UNION**



## SPEAKERS:

**Sarah Foltz Jordan** – Xerces Society

**Sarah Nizzi** – Xerces Society

## THE FARM:

Scattergood Friends Farm is part of Scattergood Friends School, a small Quaker boarding school about 15 miles east of Iowa City. The farm includes 8 acres of organic gardens and orchards certified organic by Iowa Department of Agriculture and Land Stewardship, and about 30 acres of pasture used to grass-finish beef and lamb. Scattergood also raises a few heritage-breed Guinea hogs, a small flock of turkeys and occasional broiler and laying chicken flocks.

Scattergood primarily grows food for the school, but has in the past produced for farmers markets, New Pioneer Co-op and a small CSA. The school has been an example of an extreme farm-to-school program since 1890, but more recently since 2003, when a decision was made to raise much of the food consumed at Scattergood. Field day host Mark Quee has been the farm manager at Scattergood for 16 years.

## DIRECTIONS:

**From Iowa City:** Take I-80 east for 9.7 miles and take Exit 254 north into West Branch. Turn right onto Main Street (it turns into Herbert Hoover Highway) and go about 1.5 miles; the farm is on the right.



# ROTATIONALLY RAISING POULTRY ON PASTURE

*Saturday, SEPT. 21*

2 – 4 p.m.

2625 Highway 1 SW

Iowa City, IA 52240

*Host:* **SUSAN YOUNG**

Lucky Star Farm

(319) 683-4042 | [susan@theluckystarfarm.com](mailto:susan@theluckystarfarm.com)

[theluckystarfarm.com](http://theluckystarfarm.com)

[facebook.com/luckystarfarm.iowacity](https://facebook.com/luckystarfarm.iowacity)

Instagram: [@luckystarfarm.iowacity](https://www.instagram.com/luckystarfarm.iowacity)

Guests are invited to an ice cream social by the pond after the field day.

**RSVP for the social to Debra Boekholder, [debra@practicalfarmers.org](mailto:debra@practicalfarmers.org) or (515) 232-5661, or online at [practicalfarmers.org/field-days](http://practicalfarmers.org/field-days), by Wednesday, September 18.**

Susan will share her tips and tricks for raising poultry rotationally on pasture. We'll see her setup for raising Thanksgiving turkeys, and Susan will discuss how she has started the process of incorporating silvopasture into her system. The day will conclude with a marketing discussion about using home delivery to sell eggs. Guests are invited to stay for the ice cream social afterwards.

## TOPICS:

Rotational, pastured poultry

Processing and marketing Thanksgiving turkeys

Beginning to set up silvopasture

Marketing eggs

*Sponsored by:*

**PREMIER 1 SUPPLIES**

**PROFESSIONAL PROTEINS, LTD**



## SPEAKERS:

**Joe Dixon** – Natural Resources Conservation Service

**Joe Klingelhutz** – Sustainable Iowa Land Trust

## THE FARM:

Susan Young owns and operates Lucky Star Farm, located on a 20-acre stretch of land on the outskirts of Iowa City. The farm is home to about 100 chickens, a small flock of turkeys, a dozen Nigerian dwarf goats and a trio of dogs and llamas. Susan is dedicated to organic practices and currently offers pasture-raised eggs year-round, along with turkeys for the holidays.

## DIRECTIONS:

**From Iowa City:** From the intersection of U.S. 218 and IA Hwy 1, follow IA Hwy 1 south for about 6 miles; the farm will be on the left side of the road.

**From Kalona:** Take IA Hwy 1 north for 9 miles; the farm will be on the right side of the road.

# BEEKEEPING IN IOWA: CHALLENGES AND SWEET REWARDS

*Sunday, SEPT. 22*

4 – 7 p.m.

21341 Eastman Road  
Glenwood, IA 51534

*Host:* **CAROL FASSBINDER-ORTH**  
Bountiful Blossoms Bee Company  
(712) 355-2704  
bountifulblossomsbeecompany@gmail.com

Dinner will be provided, including a honey tasting. Bring your own beverages.

**RSVP for the meal to Debra Boekholder, [debra@practicalfarmers.org](mailto:debra@practicalfarmers.org) or (515) 232-5661, or online at [practicalfarmers.org/field-days](http://practicalfarmers.org/field-days), by Wednesday, Sept. 18.**

This field day will focus on the basics of beekeeping in the fall and winter months in Iowa. Carol will discuss a range of topics, including honey harvesting, marketing and storage options; preventing and detecting colony collapse and loss; site selection for beehives; bee forage considerations; supplemental feeding of bees; parasite and pest treatment options; bee breed characteristics; winterizing colonies; and more.

## TOPICS:

Preventing and detecting colony collapse disorder  
Winterizing hives  
Honey harvesting  
Supplemental feeding



## THE FARM:

Carol and her husband, Brian Orth, started Bountiful Blossoms Bee Company, LLC, in 2015 on their 23-acre farm north of Glenwood. They sell varietal honeys and an all-natural skin and hair care line that includes honey and beeswax soaps, shampoos, salves, scrubs and more. Carol is also a biology professor at Creighton University, and a portion of the proceeds from the sale of their products supports Carol's honeybee health research program at Creighton. To increase pollinator foraging diversity in the area, Carol and Brian incorporate bee forage plantings around their property, including clover cover crops and native prairie plantings, using funds through the U.S. Department of Agriculture's Environmental Quality Incentives Program.

## DIRECTIONS:

**From I-29 N:** Take Exit 42 for IA-370 toward Bellevue / U.S. 34 W and turn left onto Bunge Avenue. Go 0.6 mile and turn right (south) on 195th Street / County Road L31 and follow for 3 miles to Eastman Road. Turn left and go 2.8 miles; the farm will be on the right (south) side of the road. Google Maps works.



# USING GOATS FOR RESTORATION AND MARKET DIVERSIFICATION

*Saturday, SEPT. 28*

1 – 5 p.m.

2626 370<sup>th</sup> St.

Chelsea, IA 52215

*Host:* **ADAM LEDVINA**

A potluck meal will follow the field day. Goat meat will be provided; please bring a side dish to share.

Are you curious about how raising goats can not only be fun but also profitable? Adam Ledvina will share why and how he raises Kiko goats to meet his goals of ecological restoration and profitability. As a beginning farmer, Adam has started a profitable business using goats for brush management and selling Kiko breeding stock. We'll discuss permanent and temporary fencing, parasite resistance, genetic selection and the increasingly profitable goat market. Adam will also share how he manages browsing on other people's land while using Natural Resources Conservation Service cost-share programs.

## TOPICS:

Kiko goats for ecological restoration  
Mobile grazing infrastructure  
Low-input, flexible management  
Farm transition  
Breeding, kidding and feeding

*Sponsored by:*

**NATIONAL KIKO REGISTRY**

**PREMIER 1 SUPPLIES**

**TAMA SOIL & WATER CONSERVATION DISTRICT**



## THE FARM:

The Ledvina family operates 190 acres consisting of pasture, hay, row crops and land enrolled in the Conservation Reserve Program. The farm comprises a diverse landscape, including riparian forests along a tributary of the Iowa River, prairie, savanna and hilly woodland forests. Ten years ago, the family farm consisted of 80 acres of row crops and 110 fallow acres; now it is used to its entire potential to support livestock, wildlife and conservation.

## DIRECTIONS:

**From U.S. 30:** Turn right (south) on P Avenue and go 4.4 miles (you'll cross the Iowa River). Turn left (east) on 370th Street, travel 1 mile and turn left (north) on Q Avenue. Go about 0.3 mile to 370th Street and turn right (east); the white farmhouse will be just past the bridge on the right (south) side of the road.

**From Tama:** Take U.S. 63 south out of town for 2 miles and turn left (east) on 350th Street / County Road E64 go about 6.5 miles; the road will curve east and Co Rd E64 will join with 380th Street. Continue for 2.1 miles and turn left (north) on Q Avenue. Go 1 mile and turn right (east) onto 370th Street; the white farmhouse will be just past the bridge on the right (south) side of the road.



# EXTENDING THE VEGETABLE SEASON IN THE FIELD AND HIGH TUNNEL

*Sunday, OCT. 6*

3 – 5 p.m.

825 Abbe Hills Road  
Mount Vernon, IA 52314

*Host:* **LAURA KROUSE**

Abbe Hills Farm

[laura@abbehills.com](mailto:laura@abbehills.com) | [abbehills.com](http://abbehills.com)

A light supper will follow the field day.

**RSVP for the meal to Debra Boekholder,**  
**[debra@practicalfarmers.org](mailto:debra@practicalfarmers.org) or (515) 232-5661,**  
**or online at [practicalfarmers.org/field-days](http://practicalfarmers.org/field-days),**  
**by Wednesday, Oct. 2.**

Growing produce in the fall affords all the fun of growing the same crops in the spring, but with fewer of the problems. Tour a 100-share CSA farm that provides food from the gardens until late fall without requiring the use of a high tunnel. Laura will also show off her newest high tunnel, built in 2019, and share the results of her first season growing in it – whatever they may be!

## **TOPICS:**

Variety selection

Planting dates

Harvest planning

Irrigation

Seeders and harvest tools

High tunnel production

Obtaining cost-share through the Natural Resources

Conservation Service's Environmental Quality

Incentives Program (EQIP)

*Sponsored by:*

**BEAUTIFUL LAND PRODUCTS**

**IOWA FARMERS UNION**

**PROGRESSIVE AGRICULTURAL SOLUTIONS**



## **THE FARM:**

Abbe Hills Farm is situated on 72 acres north of Mt. Vernon. Laura and her crew grow vegetables for a large CSA, plus a handful of other local markets, especially fall crops. The farm is managed with crop rotation, cover crops, integrated pest management and pollinator habitat, and without the use of synthetic pesticides. Soil conservation and water quality practices are used over the entire farm. Laura also serves as a soil and water conservation district commissioner.

## **DIRECTIONS:**

**From Cedar Rapids:** Take Mt. Vernon Road southeast to Abbe Hills Road, which intersects near the Community Bible Church. Turn left (east) on Abbe Hills Road; the farm is about 1 mile east. You will see two red sheds and two high tunnels on the north side of the road.

# URBAN FARMING: GREENS AND FARM STORE SALES

*Sunday, NOV. 10*

1 – 3 p.m.

5085 Meredith Drive  
Des Moines, IA 50310

*Host:* **JENNY QUINER**

Dogpatch Urban Gardens  
jenny@dogpatchurbangardens.com  
dogpatchurbangardens.com

Refreshments will follow the field day.

**RSVP for the meal to Debra Boekholder,**  
**debra@practicalfarmers.org or (515) 232-5661,**  
**or online at practicalfarmers.org/field-days,**  
**by Wednesday, November 6.**

In only a few years, Jenny has created a vibrant urban farm and farm stand with help from family and friends. Join Jenny for a tour of the farm's garden beds and infrastructure, including the packing shed, farm store and high tunnel. She'll share tips for branding, sales and marketing and producing high-quality greens and salad vegetables.

## TOPICS:

Urban farming and zoning compliance  
Infrastructure (packing shed, high tunnel and low tunnels)  
Greens production  
Farm branding  
Farm store model



## THE FARM:

Dogpatch Urban Gardens is situated on 1 acre of land in a residential area, with roughly a quarter-acre under cultivation. Jenny has been operating the farm since 2016, and specializes in growing annual vegetable crops, particularly salad greens. All crops are grown without synthetic chemicals. The business is diversified with multiple ways for the community to support the farm, including salad subscriptions, farm dinners, restaurant sales and a farm stand – a seasonal, on-site store that sells Dogpatch Urban Gardens products, as well as other items from growers across Iowa.

## DIRECTIONS:

**Note:** Additional parking is available in the parking lot across from the farm stand (off of 51<sup>st</sup> Street).

**From I-35 / I-80:** Take Exit 131 for Merle Hay Road and turn south on Merle Hay Road. In 0.6 mile, turn left (east) onto Meredith Drive; the farm will be on the north side of the road in 0.5 mile.

# FRIEND-OF-PFI EVENTS

Friend-of-PFI events are non-PFI events organized by other groups or independently by farmers.

(Please Note: Because friend-of-PFI events are run independently, we have no control over changes or cancellations.)

## JUNE

### SILT SHOWCASE DAY

**June 4 • 1-4 p.m.**

**2329 Kale Boulevard  
Fairfield, IA 52556**

This event is organized by the Sustainable Iowa Land Trust (SILT), and is for farmland and acreage owners interested in permanently protecting their land from development while leaving a legacy of healthy food farming to Iowa. Farm hosts John Freeburg and Susan Walch will start with a farm tour and discuss the many ways they incorporate food production on their land. SILT representatives will then share legal options for permanently protecting land and how those impact land value. We'll also discuss ideas for what kind of food products can be grown on that particular farm based on soils, slopes, surrounding uses and more. Solutions for keeping the farm in the family, as well as passing it on to a reliable steward beyond the family, will be covered. Refreshments included.  
**Questions: Joseph Klingelhutz, (319) 800-8108, [joe@silt.org](mailto:joe@silt.org) | [silt.org](http://silt.org)**

### NIFF AT JÓIA FOOD FARM

**June 9 • 4:30-7:30 p.m.**

**2038 March Ave.  
Charles City, IA 50616**

See a grain and livestock operation, talk grazing and learn about the transition to organic. Northeast Iowa Food and Farm network is a gathering of local food farmers and friends building relationships, finding common interests, collaborating, learning and working together to strengthen the local food system. Are you an aspiring, beginning, transitioning or experienced local food or niche producer who wants to connect? Are you an eater who wants to help support local food growers? If so, this network is for you. Everyone is welcome!  
**Questions: Kayla Koether, (563) 568-6345, [koether@iastate.edu](mailto:koether@iastate.edu) | [iowafreshfood.com/site/niff-calendar.html](http://iowafreshfood.com/site/niff-calendar.html)**

### POLLINATOR TOUR

**June 17 • 9 a.m.-Noon**

**201 W Main St.  
Waukon, IA 52172**

Come walk some fields full of native wildflowers and grasses. Experience

pollinator habitat and learn how to create and manage it. Learn about the importance of pollinators (from bees to monarchs), find out what programs may be available to help and ask questions of local professionals.

**Questions: Allie Rath, (319) 330-6015, [arath@pheasantsforever.org](mailto:arath@pheasantsforever.org)**

### POLLINATOR TOUR

**June 18 • 9 a.m.-Noon**

**102 N Main St.  
Elkader, IA 52043**

Come walk some fields full of native wildflowers and grasses. Experience pollinator habitat and learn how to create and manage it. Learn about the importance of pollinators (from bees to monarchs), find out what programs may be available to help and ask questions of local professionals.

**Questions: Allie Rath, (319) 330-6015, [arath@pheasantsforever.org](mailto:arath@pheasantsforever.org)**

### POLLINATOR TOUR

**June 19 • 9 a.m.-Noon**

**202 S 1<sup>st</sup> St.  
Greenfield, IA 50273**

Come join us to learn about the importance of pollinators, their habitat requirements and the benefits of pollinator habitat for soil health, water quality and other wildlife species! We will head out in the field to look at native pollinator habitat and talk about how to create and manage native grasses and wildflowers. We'll also discuss financial assistance programs available for landowners and producers, and guests will have an opportunity ask questions of local resource professionals.

**Questions: Kelsey Fleming, (712) 660-0880, [kfleming@pheasantsforever.org](mailto:kfleming@pheasantsforever.org)**

### POLLINATOR TOUR

**June 19 • 9 a.m.-Noon**

**120 N Industrial Parkway  
West Union, IA 52175**

Come walk some fields full of native wildflowers and grasses. Experience pollinator habitat and learn how to create and manage it. Learn about the importance of pollinators (from bees to monarchs), find out what programs may be available to help and ask questions of local professionals.

**Questions: Allie Rath, (319) 330-6015, [arath@pheasantsforever.org](mailto:arath@pheasantsforever.org)**

### POLLINATOR TOUR

**June 20 • 9 a.m.-Noon**

**2600 Swan Lake Boulevard  
Independence, IA 50644**

Come walk some fields full of native wildflowers and grasses. Experience pollinator habitat and learn how to create and manage it. Learn about the importance of pollinators (from bees to monarchs), find out what programs may be available to help and ask questions of local professionals.

**Questions: Allie Rath, (319) 330-6015, [arath@pheasantsforever.org](mailto:arath@pheasantsforever.org)**

### NORTH IOWA LOCAL FOOD CONNECTION - SUMMER SOLSTICE GATHERING

**June 22 • 3-5:30 p.m.**

**3319 140<sup>th</sup> St.  
Thornton, IA 50479**

Come hungry and get fed through this summer solstice gathering on Paul Willis' beautiful hilltop farm. We'll welcome Greg Padgett, of Practical Farmers of Iowa, and Paul Willis, of Niman Ranch, for a robust discussion about various dynamics of market models for local food. We'll also learn about PFI's Savings Incentive Program. Bring a potluck dish to share and your own serving utensils to top off the discussion with a scrumptious summer solstice picnic. **Questions: Marie Boyd, (515) 337-2445, [marie@healthyharvestni.com](mailto:marie@healthyharvestni.com) | [healthyharvestni.com](http://healthyharvestni.com)**

## JULY

### MULTIPLE BENEFITS OF GOING ORGANIC AND POLICIES NEEDED TO TRANSITION

**July 9 • 4-7 p.m.**

**288 M Ave.  
Churdan, IA 50050**

Learn about (and see first-hand) the benefits of growing organically, including increased biodiversity, increased carbon sequestration and potentially higher returns with less up-front investment. Patti and George Naylor have gone beyond the corn-soybean rotation on their farm, adding perennials and oats, pollinator habitat and an orchard. A light supper will be provided. **Questions: Stephanie Petersen, (515) 865-9940, [stephanie@iowaorganic.org](mailto:stephanie@iowaorganic.org) | [iowaorganic.org](http://iowaorganic.org)**



## **NIFF AT LUNA VALLEY FARM**

**July 14 • 4:30–7:30 p.m.**

**3012 Middle Sattre Road  
Decorah, IA 52101**

Learn about agritourism on a pizza farm with “glamping” (glamorous camping), organic grains and livestock. Northeast Iowa Food and Farm network is a gathering of local food farmers and friends building relationships, finding common interests, collaborating, learning and working together to strengthen the local food system. Are you an aspiring, beginning, transitioning or experienced local food or niche producer who wants to connect? Are you an eater who wants to help support local food growers? If so, this network is for you. Everyone is welcome! **Questions:** Kayla Koether, (563) 568-6345, [koether@iastate.edu](mailto:koether@iastate.edu) | [iowafreshfood.com/site/niff-calendar.html](http://iowafreshfood.com/site/niff-calendar.html)

## **NORTH IOWA LOCAL FOOD CONNECTION – JULY FIELD DAY**

**July 21 • 3–5:30 p.m.**

**15487 370<sup>th</sup> St.**

**Forest City, IA 50436**

Come for a tour of two businesses just 1 mile apart. J&J Drydock Shrimp is a home-based business raising saltwater Pacific white shrimp. Red Shed Gardens was a landscape business turned full-time commercial vegetable production. Come learn about the journey of both and the hopes and dreams of these two neighboring businesses. (Note: This event has multiple stops) **Questions:** Contact Marie Boyd, (515) 337-2445, [marie@healthyharvestni.com](mailto:marie@healthyharvestni.com) | [healthyharvestni.com](http://healthyharvestni.com)

## **EXPANDING YOUR VEGETABLE FARM AND KNOWING WHEN IT'S TIME TO EXPAND**

**July 25 • 4–7 p.m.**

**1007 Locust Road  
Decorah, IA 52101**

Mike Bollinger and Katie Prochaska grow organic vegetables, microgreens and cut flowers for a CSA, local grocery stores and spring transplants for Seed Savers Exchange in the city limits of Decorah. Continuing to expand what they grow at River Root Farm, and how much they sell, they recently purchased more land. How do you know when it's time to upsize your operation? Tour their farm and learn about their decision-making process and preparation needs to get an organic field ready for growing. **Questions:** Stephanie Petersen, (515) 865-9940, [stephanie@iowaorganic.org](mailto:stephanie@iowaorganic.org) | [iowaorganic.org](http://iowaorganic.org)

## **GO HOG WILD FOR FARMING AT ERSTWHILE FARMS**

**July 27 • 1–2 p.m.**

**38496 197 St.**

**Columbus, NE 68601**

This tour will demonstrate good organic practices with hogs, vegetables and eggs.

**Questions:** Lucia Schulz, (402) 750-5727, [lucias@cfra.org](mailto:lucias@cfra.org)

## **NUTS FOR WATER QUALITY FIELD TOUR**

**July 31 • 8:30 a.m.–8 p.m.**

**919 IA Hwy 1 W**

**Iowa City, IA 52246**

The Iowa Nut Growers Association, Trees Forever and partners are hosting the Northern Nut Growers Association / North American Fruit Explorers 2019 Conference July 28–31. Two days of intense presentations and research updates culminate with this day-long field tour. We will travel to several sites learning about fruits, nuts, water quality and everything in between. Farm visits will include: Blueberry Bottom Farm (Brighton); Chinkapin Bluffs Recreation Area (Columbus Junction); Prairie Grove Chestnut Growers Cooperative (Columbus Junction); and Red Fern Farm (Wapello). Supper will be at the Thirsty Camel.

The bus will load and leave at 8:30 a.m. at the Iowa City Walmart parking lot (919 IA Hwy 1 West). The cost is \$30 if riding the bus, \$15 if following in your car. Lunch is provided in the cost, but supper is not. Registration is required. For more information or to register, visit [treesforever.org](http://treesforever.org). (Note: This event has multiple stops) **Questions:** Jeff Jensen, (515) 320-6756, [jjensen@treesforever.org](mailto:jjensen@treesforever.org) | [treesforever.org](http://treesforever.org)

## **AUGUST**

## **ALEGRES CON LA AGRICULTURA (HAPPY FARMING)**

**August 4 • 5–6 p.m.**

**75320 Road 439**

**Lexington, NE 68850**

On this tour, we will learn how a beginner farmer maintains a positive view of farming after the last snow storm in western Nebraska. **Questions:** Lucia Schulz, (402) 750-5727, [lucias@cfra.org](mailto:lucias@cfra.org)

## **ISU FRUIT AND VEGETABLE FIELD DAY**

**August 5 • 2–6:30 p.m.**

**55519 170<sup>th</sup> St.**

**Ames, IA 50010**

This annual event will feature various research and demonstration projects on fruit and vegetable production for commercial growers, extension personnel, non-profit organizations and master gardeners. The field day will provide an opportunity to evaluate research projects focusing on high tunnel vegetable and fruit production, organic vegetable production, biodegradable plastic mulch, sweet potato, pest management in cucurbit crops, hops, peaches, and honeybee and wasp research.

**Questions:** Ajay Nair (515) 294-7080 [nairajay@iastate.edu](mailto:nairajay@iastate.edu) | [extension.iastate.edu/vegetablelab](http://extension.iastate.edu/vegetablelab)

## **TOUR THE AMERICAN NATURAL PROCESSORS FACILITY**

**August 7 • 1–3 p.m.**

**1510 S 2<sup>nd</sup> St.**

**Cherokee, IA 51012**

In 2000, Mark and Julie Schuett started American Natural Processors, a facility that processed organic and non-GMO soybeans into high-quality soybean meal and edible vegetable oil without the use of chemicals or preservatives. Today, they process a wide variety of organic grains and oil seeds including soybeans, canola, flax, hemp, pumpkin, almond, sunflower and rice, as well as complete organic livestock feeds. ANP has grown to be one of the largest organic ingredient processors in the U.S., with processing plants in Hartley, Cherokee, Galva and, most recently, Sioux City. Tour their state-of-the-art facility in Cherokee. **Questions:** Stephanie Peterson, (515) 865-9940, [stephanie@iowaorganic.org](mailto:stephanie@iowaorganic.org) | [iowaorganic.org](http://iowaorganic.org)

*Continued on next page*

**HONEY EXTRACTION ON A  
SMALL AND LARGE SCALE**  
**August 10 • 9:30–11:30 a.m.**  
**5985 G Road**  
**Nebraska City, NE 68410**

You have honeybees and you have kept them alive successfully. Now what do you do with all of the honey they made? Extraction can be as simple and cheap or as complicated and expensive as you want it to be. There is also a big difference between large-scale operations and small hobby-scale extractions. Regardless of how much honey you are extracting, you need a certain amount of preparation and tools, which will be covered in great depth in this learning series. **Questions:** *Kirstin Bailey, (402) 367-8989, [kirstinb@cfra.org](mailto:kirstinb@cfra.org) | [events.unl.edu/GPMB/2019/08/10/138894](http://events.unl.edu/GPMB/2019/08/10/138894)*

**ORGANIC DAIRY PRODUCTION  
AT PRAIRIE STAR FARM**  
**August 14 • 4–7 p.m.**  
**358 McCabe Road**  
**Waukon, IA 52712**

Do you know what it takes to produce organic milk? This is your opportunity to peek inside the barn and stroll through the pasture while learning some best practices from John and Meghan Palmer related to operating an organic dairy farm. The Palmers milk 120 cattle and sell the milk to Organic Valley Cooperative. They also have 400 acres of crops for livestock feed and manage 200 acres of pasture.

**Questions:** *Stephanie Peterson, (515) 865-9940, [stephanie@iowaorganic.org](mailto:stephanie@iowaorganic.org) | [iowaorganic.org](http://iowaorganic.org)*

**NIFF FARMER RETREAT AT  
TURKEY RIVER FARM**  
**August 17–18**  
**23719 Hazel Road**  
**Elkport, IA 52044**

Kick back with farmer friends, camp out, make delicious new foods and float the Turkey River. This event starts on Aug. 17 at 4:30 p.m. and will end around 2 p.m. on Aug. 18. Northeast Iowa Food and Farm network is a gathering of local food farmers and friends building relationships, finding common interests, collaborating, learning and working together to strengthen the local food system. Are you an aspiring, beginning, transitioning or experienced local food or niche producer who wants to connect? Are you an eater who wants to help support local food growers? If so, this network is for you. Everyone is welcome! **Questions:** *Kayla Koether, (563) 568-6345, [koether@iastate.edu](mailto:koether@iastate.edu) | [iowafreshfood.com/site/niff-calendar.html](http://iowafreshfood.com/site/niff-calendar.html)*

**PRAIRIE STRIPS IOWA  
COUNTY FIELD DAY**  
**August 5 • 5–7 p.m.**  
**1866 220<sup>th</sup> St.**  
**Marengo, IA 52301**

Join Iowa State University's prairie STRIPS team at the Morse Farm in Iowa County. Hear from landowner Shami Lucena Morse, STRIPS staff and ISU researchers about the benefits of prairie strips and how to integrate prairie into your farm. The discussion will include how to establish and maintain prairie strips, and the impact of prairie strips on breeding songbirds and wintering pheasants. A guided walk in the prairie strips will follow the program. This event is free and open to the public. A free meal will be provided. **Questions:** *Tim Youngquist, (712) 269-0592, [timyoung@iastate.edu](mailto:timyoung@iastate.edu) | [prairiestrips.org](http://prairiestrips.org)*

**ISU NEELY-KINYON  
ORGANIC FIELD DAY**  
**August 20 • 4–7 p.m.**  
**2557 Norfolk Ave.**  
**Greenfield, IA 50849**

Iowa State University's annual organic field day will highlight the 22nd year of the Long-Term Agroecological Research (LTAR) experiment, one of the longest-running comparisons of organic and conventional grain production in the U.S. The event will also highlight the Organic No-Till experiment, and the organic corn breeding trial. A light meal will be served. **Questions:** *Kathleen Delate, (515) 294-7069, [kdelate@iastate.edu](mailto:kdelate@iastate.edu)*

**CTIC CONSERVATION IN ACTION  
TOUR: CONSERVATION AT THE  
LEADING EDGE**  
**August 21 • 7:30 a.m.–8 p.m.**  
**101 E Locust St.**  
**Des Moines, IA 50309**

This year, the popular annual Conservation Technology Innovation Center tour comes to central Iowa! From the starting point in Des Moines, you'll travel to four different stops and learn about a wide range of edge-of-field practices related to Iowa's Nutrient Reduction Strategy. Farmers and experts in the field will showcase prairie strips, biodigesters, saturated buffers, native habitat, nutrient management systems for manure and commercial fertilizer and more. See conservation practices at various levels of maturity, from the application of cover crops with a highboy seeder to mature prairie strips. Registration is required. (Note: This event has multiple stops) **Questions:** *Crystal Hatfield, (765) 494-9555, [hatfield@ctic.org](mailto:hatfield@ctic.org) | [ctic.org/cia\\_tour/Overview](http://ctic.org/cia_tour/Overview)*

**AGARTS FIELD DAY**  
**August 25 • Noon–4 p.m.**  
**56676 160<sup>th</sup> St.**  
**Ames, IA 50010**

The AgArts Field Day will be hosted this year by Dean and Denise Biechler at their beautiful farm, where they also operate Loya's Little House Bed & Breakfast near Ames. Their farm represents a model of land stewardship. Come experience the ways in which the arts play a vital role in imagining and promoting healthy food systems. Spend an afternoon with us enjoying the beauty of the Skunk River Valley. Surround yourself with the artwork of Dean Biechler and other accomplished visual artists who engage with agriculture and the natural world. Hike the trails, get to know the prairie and play a game of croquet on the lawn with your kids. Chef Donna Prizgintas will prepare a main dish for lunch and participants are invited to bring potluck side dishes. Don't miss a dazzling, funny, family-friendly Farm-to-Fork-Tales performance featuring PFI members telling their own stories of escaped farm animals. Then enjoy an additional performance of Mary Swander's "Map of my Kingdom," a play about farmland succession originally commissioned by PFI. **Questions:** *Mary Swander, (319) 683-2613, [swandermary@gmail.com](mailto:swandermary@gmail.com) | [agarts.org](http://agarts.org)*

**SILT SHOWCASE DAY**  
**August 28 • 1–4 p.m.**  
**1755 Ridgeway Boulevard**  
**Lawler, IA 52154**

This event is organized by the Sustainable Iowa Land Trust (SILT), and is designed for farmland and acreage owners interested in permanently protecting their land from development while leaving a legacy of healthy food farming to Iowa. Farm hosts Richard, Robert and Jane Blazek will start with a farm tour and discuss their concerns about the future of their farm. SILT representatives will then provide legal options for permanent land protection, information about the impact on land value and ideas for what kind of food products can be grown on that particular farm based on soils, slopes, surrounding uses and more. Solutions for keeping the farm in the family, as well as passing it on to a reliable steward beyond the family, will be covered. Refreshments included. **Questions:** *Joseph Klingelhut, (319) 800-8108, [joe@silt.org](mailto:joe@silt.org) | [silt.org](http://silt.org)*

## SEPTEMBER

### **NORTH IOWA LOCAL FOOD CONNECTION - SEPTEMBER FIELD DAY**

**September 22 • 2:30–6:30 p.m.  
1119 Central Ave. East  
Clarion, IA 50525**

Meet Ashley Recknor who, together with her family, has forged rich relationships throughout Wright County that are part of the Purple Ribbon Beef story. The field day will travel from the Purple Ribbon Beef farm store to the farm, the processing locker (no butchering or meat-cutting on this tour) and Timbukbru (spent grain from this brewery feeds Purple Ribbon Beef). Finally, enjoy a supper of burgers served by Grounded. Grounded, of Clarion, features Purple Ribbon ground beef for 100% of its ground beef and uses other locally sourced ingredients. Get keen insight on how all of these partners help to support one another. The short tour is free (includes the farm store and farm). The long tour – which includes all sites listed and supper by Grounded – has a fee and limited number of spots. Contact us early to reserve your place for this field day. (Note: This event has multiple stops) **Questions: Marie Boyd, (515) 337-2445, [marie@healthyharvestni.com](mailto:marie@healthyharvestni.com) | [healthyharvestni.com](http://healthyharvestni.com)**

## OCTOBER

### **THE HARVEST SPOON TOUR**

**October 5 • 10 a.m.–4 p.m.  
31140 185<sup>th</sup> St.  
Honey Creek, IA 51542**

We are locally grown businesses and organizations that promote, enhance and increase the awareness of and passion for local food and its culture in Harrison and Pottawattamie counties. We will be open to all visitors on the first Saturday of the month in May and October. Join our partner businesses on Harvest Spoon Saturdays for creative and unique events including tours, samples, experiences and much more. For information on planned special events on Harvest Spoon Tour days, please visit our Facebook page at [facebook.com/harvestspoonatour](https://facebook.com/harvestspoonatour). (Note: This event has multiple stops) **Questions: Janna Feldman, (402) 594-5111, [doesanddivas@gmail.com](mailto:doesanddivas@gmail.com) | [theHarvestSpoon.org](http://theHarvestSpoon.org)**

### **MANAGING PRAIRIE PLANTINGS WITH CONTROLLED BURNS**

**October 17 • 10 a.m.–12:30 p.m.  
28403 160<sup>th</sup> St. (County Road D19)  
Dike, IA 50624**

A controlled burn is an important tool for effectively managing native vegetation. This joint field day from Iowa State University and the Tallgrass Prairie Center will be held at Roadman Memorial Park, and will help landowners, farmers and conservation professionals learn the components of a safe and successful controlled burn. Participants will visit an in-field prairie strip in its third year of establishment. Event partners include ISU STRIPS, University of Northern Iowa: Tallgrass Prairie Center, Hertz Farm Management and Pheasants Forever. Depending on weather conditions, a small burn may be demonstrated. A complimentary lunch will be provided following the event. RSVPs are preferred for meal planning purposes. **Questions: Ashley Kittle, (319) 273-3828, [ashley.kittle@uni.edu](mailto:ashley.kittle@uni.edu) | [tallgrassprairiecenter.org/prairie-farms/events](http://tallgrassprairiecenter.org/prairie-farms/events)**

### **HAWKEYE BUFFALO RANCH & CHAINSAW WORKSHOP**

**October 20 • 1:30–6 p.m.  
2459 290<sup>th</sup> St.  
Fredericksburg, IA 50630**

Learn chainsaw skills on a bison ranch! Talk grazing techniques in oak savanna with magnificent native species. Northeast Iowa Food and Farm network is a gathering of local food farmers and friends building relationships, finding common interests, collaborating, learning and working together to strengthen the local food system. Are you an aspiring, beginning, transitioning or experienced local food or niche producer who wants to connect? Are you an eater who wants to help support local food growers? If so, this network is for you. Everyone is welcome! **Questions: Kayla Koether, (563) 568-6345, [koether@iastate.edu](mailto:koether@iastate.edu) | [iowafreshfood.com/site/niff-calendar.html](http://iowafreshfood.com/site/niff-calendar.html)**

## NOVEMBER

### **PRAIRIE STRIPS SOUTHEAST IOWA FIELD DAY**

**November 19 • 3–5:30 p.m.  
3115 Louisa–Washington Road  
Crawfordsville, IA 52621**

Iowa State University Extension and Outreach, ISU prairie STRIPS and the Southeast Iowa Agricultural Research Association will host a field day highlighting on-farm conservation practices, ways to

establish and manage prairie and how to enroll in U.S. Department of Agriculture programs. A free meal will be provided. Registration begins at 2:30 p.m., and the program starts at 3 p.m. Weather permitting, a controlled burn will be demonstrated on the farm's prairie strips. **Questions: Tim Youngquist, (712) 269-0592, [timyoung@iastate.edu](mailto:timyoung@iastate.edu) | [prairiestrips.org](http://prairiestrips.org)**

### **EARLY MORNING HARVEST OPEN HOUSE: OVERCOMING POTENTIAL SOIL IMBALANCE WITH TISSUE TESTING AND FOLIAR FEEDING**

**November 23 • 10 a.m.–4:30 p.m.  
2425 Willow Ave.  
Panora, IA 50216**

Balancing soils can be difficult – results sometimes vary between soil testing and tissue testing. Join Jeff Hafner from Early Morning Harvest as he presents his research on finding that balance. He will discuss his trials on applying foliar based on the plant needs and tissue testing. **Questions: Jeff Hafner, (641) 757-2620, [info@earlymorningharvest.com](mailto:info@earlymorningharvest.com)**



# ACKNOWLEDGEMENTS

**Funding for these field days was provided in part by the following government agencies:**



**IOWA DEPARTMENT OF  
AGRICULTURE &  
LAND STEWARDSHIP**



National Institute of Food and Agriculture, U.S. Department of Agriculture: This material is based upon work that is supported by the National Institute of Food and Agriculture, U.S. Department of Agriculture, under award number 2017-01761-12301075. Any opinions, findings, conclusions, or recommendations expressed in this publication are those of the author(s) and do not necessarily reflect the view of the U.S. Department of Agriculture.

Natural Resources Conservation Service, U.S. Department of Agriculture: This material is based upon the work supported by the Natural Resources Conservation Service, U.S. Department of Agriculture, under numbers NR193A750008G004 and 69-6114-17-007. Any opinions, findings, conclusions, or recommendations expressed in this publication are those of the author(s) and do not necessarily reflect views of the U.S. Department of Agriculture. USDA is an equal opportunity provider and employer.

Iowa Department of Agriculture and Land Stewardship, Division of Soil Conservation and Water Quality: This project is supported in part by the Iowa Department of Agriculture and Land Stewardship, Division of Soil Conservation and Water Quality.





## Join Practical Farmers of Iowa today!

### INDIVIDUAL MEMBERSHIP BENEFITS

	MEMBERSHIP FOR	ANNUAL FEE
<b>STUDENT</b>	Individuals enrolled in coursework	\$20
<b>INDIVIDUAL</b>	Individuals	\$50
<b>FARM / HOUSEHOLD</b>	Whole farm families and any employees	\$60
<b>ORGANIZATION</b>	Businesses, agencies, departments	\$110
<b>LIFETIME</b>	Individuals or families that would like to make a lifetime commitment (Excludes businesses)	One-time fee of \$1,000

### ALL MEMBERSHIP BENEFITS

- Access to email discussion lists
- PFI quarterly magazine automatically sent to your doorstep
- Free and discounted learning opportunities including bus trips, trainings and workshops
- Participate in PFI programs (including Labor4Learning, Savings Incentive Program, cost-share programs)\*
- Participate in Cooperators' Program\*
- Recognition on our website, magazine, Practical News (our email newsletter)\*
- Farm signs and mailbox signs\*

\* May involve additional qualifications

► **INTERESTED?** Visit [practicalfarmers.org/join-or-renew](https://practicalfarmers.org/join-or-renew) or fill out the following page and send it to our office.

GROW YOUR FARM WITH PRACTICAL FARMERS. JOIN OR RENEW TODAY!

Want to join or renew online? Visit [practicalfarmers.org/join-or-renew](http://practicalfarmers.org/join-or-renew).

MEMBER INFORMATION

Contact Name(s)\*: \_\_\_\_\_

Farm or Organization Name: \_\_\_\_\_

Address: \_\_\_\_\_

City: \_\_\_\_\_ State: \_\_\_\_\_ ZIP: \_\_\_\_\_ County: \_\_\_\_\_

Phone 1: \_\_\_\_\_ Phone 2: \_\_\_\_\_

Email 1: \_\_\_\_\_ Email 2: \_\_\_\_\_

\* For Farm or Household membership, please list names of all persons included. For Organization membership, please list one or two contact persons.

JOIN OR RENEW

**1. THIS ANNUAL MEMBERSHIP IS A:**

☐ New Membership

☐ Renewal

**2. I AM JOINING AT THE LEVEL OF:**

☐ Student – \$20

☐ Individual – \$50

☐ Farm or Household – \$60

☐ Organization – \$110

☐ Lifetime Member\* – \$1,000

\* See details at [bit.ly/PFI-lifetime](http://bit.ly/PFI-lifetime)

**3. I AM JOINING OR RENEWING AS:**

☐ An Aspiring Farmer

☐ A Farmer or Grower

☐ Non-Farmer

**4. HOW DID YOU HEAR ABOUT PFI?**

\_\_\_\_\_

\_\_\_\_\_

\_\_\_\_\_

EMAIL DISCUSSION GROUP SIGN-UP

When you join our email discussion groups, you can network, build community and exchange ideas from anywhere, at any time. Sign up for as many groups as you'd like (and be sure to include your email address above)!

☐ Cover Crops    ☐ Field Crops    ☐ General    ☐ Horticulture    ☐ Livestock    ☐ Policy

SUSTAIN PRACTICAL FARMERS WITH AN ADDITIONAL DONATION

For the sake of the long-term health and vitality of Practical Farmers of Iowa, we ask you to consider making a donation above and beyond your membership fee. Practical Farmers of Iowa is a 501(c)3 organization. Your gift is tax deductible to the extent allowed by law.

I would like to make a one-time, tax-deductible donation to PFI in the amount of:

☐ \$1,000    ☐ \$500    ☐ \$250    ☐ \$100    ☐ \$50    ☐ \$ \_\_\_\_\_

Or, make a recurring monthly or quarterly donation. This will be automatically charged to your credit card on the first day of each month or quarter.

☐ Yes, I would like to give \$ \_\_\_\_\_ ☐ per month OR ☐ per quarter

PAYMENT

Membership Level .....\$ \_\_\_\_\_ per year for \_\_\_\_\_ year(s) = \$ \_\_\_\_\_

Additional Donation ..... = \$ \_\_\_\_\_

TOTAL AMOUNT ..... = \$ \_\_\_\_\_

☐ Check or money order is enclosed (Please make payable to "Practical Farmers of Iowa.")

☐ Credit card (Visa, MasterCard or Discover only)

Name on card \_\_\_\_\_ Number \_\_\_\_\_

Exp. Date \_\_\_\_\_ CVC# (3 digits) \_\_\_\_\_ ☐ Please automatically charge this credit card annually for membership

Office Use Only: Check # \_\_\_\_\_ Check date \_\_\_\_\_ Total amount \_\_\_\_\_ Notes \_\_\_\_\_









**PRACTICAL FARMERS  
OF IOWA**

---

1615 Golden Aspen Drive, Suite 101  
Ames, IA 50010

**PRACTICALFARMERS.ORG**