

SHARE:



[Join Our Email List](#)



Beginning
Farmer
NEWS
February 2021

Equipping farmers to build resilient farms and communities.

Continue connecting with PFI!

Was there a session or evening feature you missed at the virtual annual conference this year?

Recordings from the annual conference are starting to trickle in. Subscribe to our [YouTube channel](#), check the [video archive on our website](#) or watch through the [2021 virtual annual conference YouTube playlist](#) to catch our latest uploads!

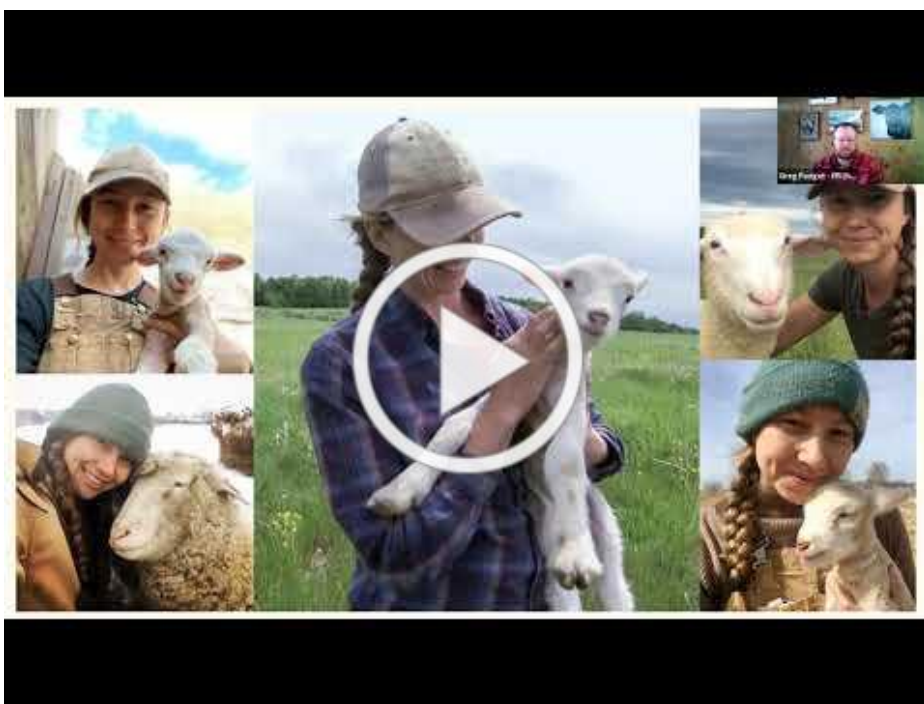


["Livestock on the Land"](#)



["Sarah Smarsh - Keynote: Homecoming"](#)

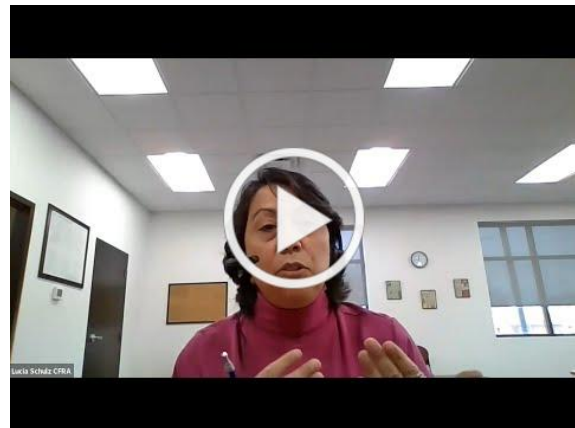
Beginning farmer-focused session recordings from the virtual conference:



"Start Shepherding From Scratch"



"Winter Production in the Hoop House"



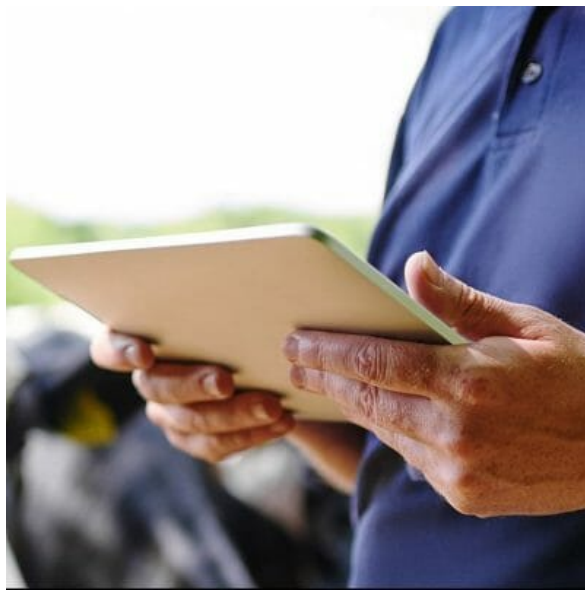
"Navegando el Acceso Agrario / Navigating Land Access"

Tune into a farminar this winter

Another way to learn from the comfort of your computer is with our Farminars.

These free online events run weekly on Tuesdays from 7-8:30 p.m. CST through March 16.

Each focuses on a unique production or business management topic and is led by a farmer or subject-matter expert.



Tune in to one of our five remaining winter farminars listed below:

Feb. 16 – “Contract Grazing Cover Crops for Winter Feed” – Jon and Jared Luhman

Feb. 23 – “High Tunnel Storm Protection and Routine Maintenance” – Adam Montri

March 2 – “Navegando los Primeros Pasos de Cultivo: Producción de Vegetales Orgánicos y Acceso a la Tierra / Navigating the First Steps to Farm: Organic Vegetable Production & Accessing Land” – Rodrigo Cala

March 9 – “Using EQIP to Improve Wildlife Habitat on Private Lands” – Kelsey Fleming

March 16 – “Pollinators & Climate Change: Making an Impact on the Farm” – Angela Laws, Sarah Nizzi

Check out the 2021 farminar lineup



**Fruit-Veg-Flower Farmer
VIRTUAL MEET-UP SERIES**

Fridays, Feb. 19–March 19 | 4–5 p.m.

Feb. 19

Seed Orders, Starts, Early Planting

Feb. 26

How Do You Plan Your Fields?

March 5

Online Sales and In-Person Markets in 2021

March 12

Software Flow for Orders, Inventory and Bookkeeping

March 19

How Are You Managing Weeds in 2021?

Join fellow horticultural farmers on Fridays from 4-5 p.m. CST for a series of virtual meet-ups to close out the winter!

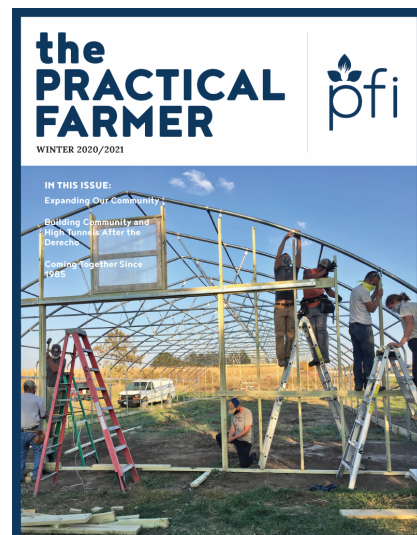
These events are FREE and open to all growers. You don't have to be a PFI member to attend. If you grow annual vegetables, perennial fruits, nuts or cut flowers – or if you direct-market other products (meat, cheese, etc.), and these topics look interesting – please join us!

Register for the series

Read through the 2020 winter magazine

If you are a Practical Farmers of Iowa member, you should have received your winter issue of our quarterly magazine, "The Practical Farmer," in the mail. If you wish to receive our magazine in the mail **join PFI today** and you'll automatically receive all future issues.

Read through the digital version of the winter magazine! Stories highlight an incubator farm providing a low-risk way to start farming, how PFI members rallied to help fellow horticultural producers in the wake of the devastating August derecho; how PFI members have been coming together since our founding – and more.



BEGINNING FARMER RESOURCES

We have recently updated our collection of business, financial, production and technical assistance resources to help aspiring and beginning farmers further their business goals. **You can access them by clicking on the icons below.**

We will continue to build this list and add new resources as they are available. If you see any resources missing that you find helpful, please share them with us. You can send them to Celize Christy at celize@practicalfarmers.org.



BUSINESS PLANNING



FINANCIAL



LAND ACCESS

The Wallace Centers of Iowa (WCI) is seeking a Farm Programs Intern

The Intern will help the Farm Programs Manager manage the organization's 12 acres of tillable land and orchard for vegetable/fruit production for use by two kitchens and an on-site farm stand. The site also includes space for cover crops, pollinator habitat, flowers and other land use. The Intern will participate in educational programming and special projects, one of which could be the construction of a geothermal greenhouse and integrating it into food production and educational opportunities. [Read the rest of the job description here.](#)

Summer Intern Wanted!

Caleb Akin and Noah Wendt of A&W Farm Operations in Huxley are looking to hire a summer organic intern. Duties would involve working with rotationally grazed cow-calf pairs, mechanically weeding organic row crops, managing labor to hand weed organic row crops, organic row crop bookwork/certification, and many more things.

If you are interested, please reach out to Noah at: (515) 491-7915 or

wendtnoah@hotmail.com.

App-Based Recordkeeping Supports Beginning Farmers

Big River Farms, AgSquared, and New Entry Sustainable Farming Project partnered to create [app-based recordkeeping tools](#). These help farmers of color, immigrant farmers, and other beginning growers keep records for organic certification and to better understand their farm businesses. The partners are looking for incubator farms and farmer service providers to experiment with the apps this year.

Building Sustainable Farms, Ranches, and Communities

This guide lists funding opportunities offered by federal programs, and is indispensable for anyone seeking government help to foster their innovative enterprise in forestry and agriculture. Specifically, addressing program resources in community development; sustainable land management; and value-added and diversified agriculture and forestry.

Starting Out Your Farm Business DIY

This workshop is for anyone who wants to put their visions, ideas, and goals into a business project. In this workshop, Lucy will share free business planning resources, ways to register an LLC, and her favorite free marketing and record-keeping tools. The cost of this workshop is based on a sliding scale system. Please see the [registration form](#) for information on cost.

Starting and Improving Farms Conference - March 6, 8, 9, and 10, 2021

Are you a potential or existing farmer who is interested in learning about starting your own farm? Join us to learn more information on how to begin your journey! Topics will include "What Does It Take To Raise Livestock" and "Understanding Marketing Lambs and Goats for Holidays."

[Register Now >](#)

Living on a Few Acres: Beef, Sheep, Goats, and Hogs - March 17, 2021, at 7:00 p.m.

Do you think you want to raise livestock? This introduction to beef, sheep, goat, and hog production is designed for people who are interested in the fundamentals of raising a few livestock animals. Topics will include selection, feeding, health, and some pasture management. Information covered will be very basic and will provide an overview production of principles for each species with time for questions at the end of the session.

[Register Now >](#)

NCAT Accepting Applications for Virtual Armed to Farm Training

NCAT is offering its popular sustainable agriculture training program for military veterans, [Armed to Farm](#), online in six sessions during April and May. Veterans who want to attend Virtual Armed to Farm can apply until March 12, 2021

Value Added Producer Grant

This USDA program helps agricultural producers enter into value added activities related to the processing and/or marketing of bio-based, value-added products. Generating new products, creating and expanding marketing opportunities, and increasing producer income are the goals of this program. The grant program awards up to \$250,000 for working capital and \$75,000 for planning. [Learn more and apply](#) by March 22. There is a free, three-week webinar offered by Cornell Cooperative Extension, explaining everything you need to know about applying for the Value Added Producer Grant. [Learn more and register.](#)

Virtual MarketReady Class

Iowa State University Extension and Outreach is providing a [MarketReady workshop series](#) in seven self-paced online modules and three live virtual discussions. The training provides producers with the skills and knowledge to make sound decisions about diversifying into wholesale, retail, and institutional markets. Fee is \$20 per person.

UPCOMING PFI EVENTS

Feb. 16: Farminar - Contract Grazing Cover Crops

7-8:30 p.m. | Online

Feb. 19: Virtual Meet-Up- Seed Orders, Starts, Early Planting

4-5 p.m. | Online

Feb. 23: Farminar - High Tunnel Maintenance

7-8:30 p.m. | Online

Feb. 26: Virtual Meet-Up- Planning Fields

4-5 p.m. | Online

March 5: Virtual Meet-Up- Online Sales & In-Person Markets

4-5 p.m. | Online

March 9: Farminar - Using EQIP to Improve Wildlife Habitat

7-8:30 p.m. | Online

March 12: Virtual Meet-Up- Software Flow

4-5 p.m. | Online

March 16: Farminar - Pollinators & Climate Change

7-8:30 p.m. | Online

March 2: Farminar - Vegetables & Land

7-8:30 p.m. | Online

View even more events on our calendar

Find A Farmer

Find A Farmer allows for a comfortable place to start anonymous conversations with land-seekers or landowners. Search for users in a particular area that fit your specifications and begin the discussion.

Find A Farmer is FREE and available for anyone with internet access! No membership is required.



[Check out more and see land available](#)

Labor4Learning

Labor4Learning helps beginning farmers get paid on-the-job training with experienced farmers, and pays experienced farmers for their time and effort.

[Check out more information](#)



Savings Incentive Program

Savings Incentive Program is a 2-year program that pairs beginning and aspiring farmers with experienced farmer mentors; provides targeted learning and peer networking opportunities; offers business planning support and guidance. All this while you save money that we match dollar for dollar, up to \$2,400, to use toward the purchase of a farm asset.



[Check out more information](#)

STAY CONNECTED



Looking for more?

Greg Padget
Next Generation Director
greg@practicalfarmers.org
(515) 232-5661

Celize Christy
Next Generation Coordinator
celize@practicalfarmers.org
(515) 232-5661