

SHARE:



[Join Our Email List](#)

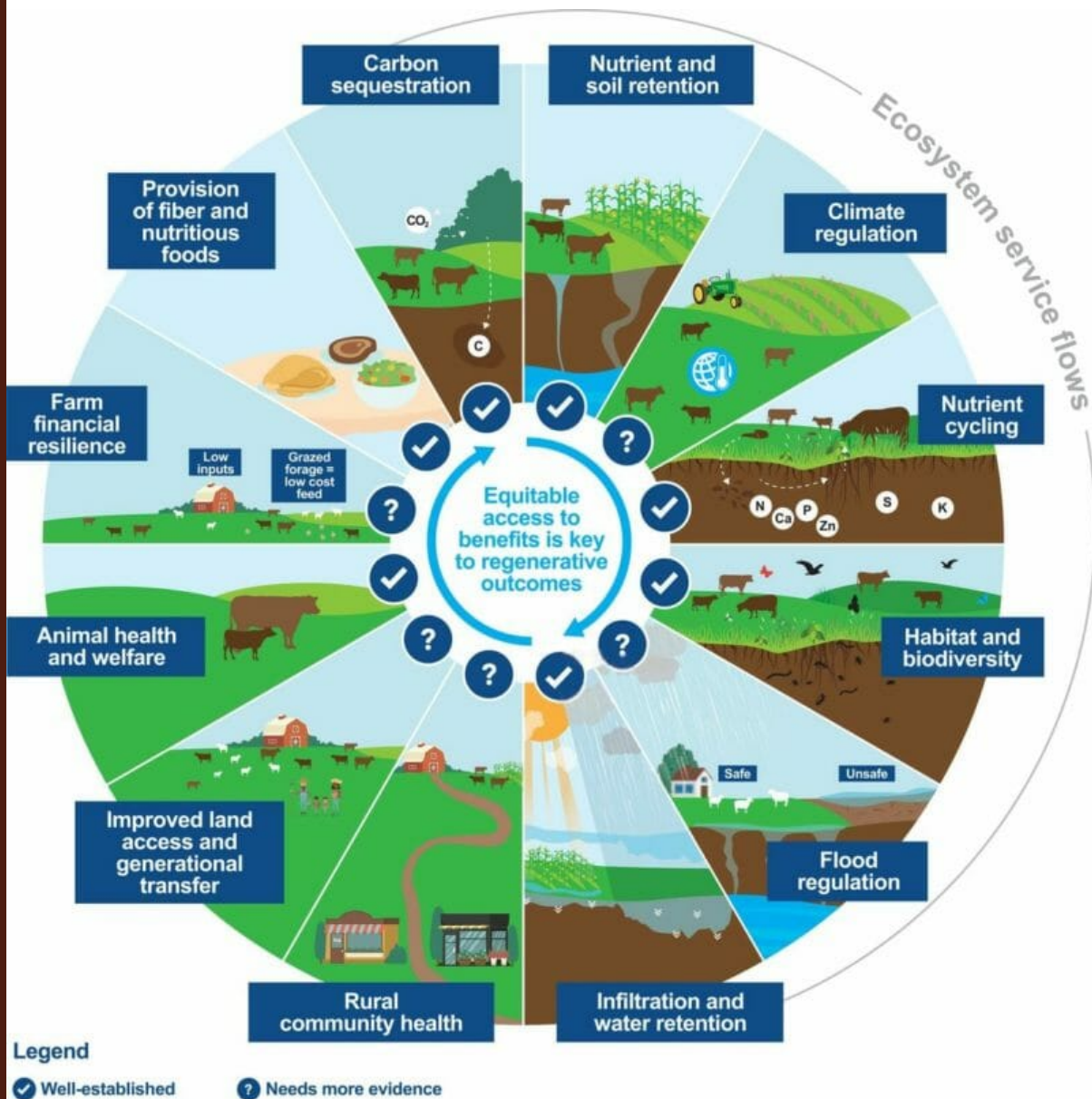


PRACTICAL FARMERS *of Iowa*

The MONTHLY FEEDSTUFF

September 2022

Equipping farmers to build resilient farms and communities.



[This article entitled, "Accelerating regenerative grazing to tackle farm, environmental, and societal challenges in the upper Midwest" in the Journal of Soil and Water Conservation,](#) is a comprehensive look at the benefits and challenges of regenerative grazing.

Touching on a wide range of topics, the article starts with making a practical case for regenerative grazing before moving on to analyze the status of, and solutions to those issues. The article highlights the areas of technical assistance, land access, finances and many other factors that contribute to the successes or barriers of the practice.

Be sure to make it to [this upcoming field day](#) on regenerative grazing! [Here's a great recap of a field day](#) from 2018 with Andy Welch on regenerative grazing.

PROGRAM UPDATES

Apply for PFI's Savings Incentive Program

When starting a farm, you are in charge of everything, from production to business management. The Savings Incentive Program is a [two-year program that helps novice farmers create successful business plans.](#)

Over the two-year program, you will save up to \$2,400 into your farm savings account. After completing the program, PFI will match your savings dollar for dollar.

This program is ideal for aspiring and beginning farmers who are planning to get started farming, or have been farming for fewer than seven years.



Questions? Contact Greg Padget at greg.padget@practicalfarmers.org

Applications are open for PFI's Farm Business Coaching Program

The [Farm Business Coaching Program](#) is ideal for those with **5+ years of farming experience** who are looking to grow their farm business. The program includes a current business assessment, and growth opportunity coaching.

Applications are open until Oct. 9.

PRACTICAL FARMERS
of Iowa

Farm Business Coaching



GROW YOUR FARM BUSINESS

Questions? Contact Greg Padget at (515) 232-5661 or greg.padget@practicalfarmers.org.

BEYOND THE GATE

New certification from A Greener World



The non-profit organization A Greener World, has released [a new certification](#) for products produced using regenerative agriculture.

AGW works with farmers to create a farm-specific management plan, which accommodates regional, local, and place-specific management needs.

You can find out more from [these FAQs](#).

Iowa Local Food Purchasing Assistance Program now accepting vendors



The Iowa Local Food Purchasing Assistance Program will buy local food from Iowa's producers **for distribution to Iowans in under-resourced communities.**

If you produce local food, including meat, in Iowa and are interested in selling your products into the Iowa LFPA Program, [follow this link to learn more and apply for this program.](#)

UPCOMING EVENTS

Field day: Regenerative Grazing with Mobile Infrastructure and Livestock Guardian Dogs

Oct. 5 | 11 a.m.-2 p.m. | Wilton, IA

Join us for a field day with **JR Jenkins** of Pleasant Prairie Stock Farm, to learn about rotationally grazing cattle and sheep on pasture and cover crops.

JR solely grazes on leased land. He also breeds and trains livestock guardian dogs, direct-markets 100% grass-fed beef and lamb and owns a custom fence company.



We'll enjoy a potluck lunch with burgers from JR's beef at his cousin's **wedding barn**, where we'll also discuss agritourism.

Field day: Creating a Diverse Silvopasture Farm on Former Row Crop Ground

Oct. 8 | 2-4 p.m. | Clemons, IA

Join us for a field day where **Tim Swinton** will share how he's turning his 11 acres of former row crop farmland into a highly diverse farm that encompasses a variety of food crops and conservation practices.

Newly established tree and shrub species, such as chestnut, apple, pear, honeyberry, black currant and oak, will create a functional silvopasture system to support fruit and nut production and provide grazing space for goats.



A representative from the Sustainable Iowa Land Trust will share how SILT's landowner consultation program can help other landowners like Tim explore their land's potential, and provide tangible ideas for tapping into that potential.

Coming up in the next month

All events below are listed in central daylight time.

Sept. 26: Webinar - Showcase the Whole Animal With Value Added

Oct. 4-6: Field Day - Management Intensive Grazing School

Products

Hosted by: The Livestock Conservancy
1-2 p.m. EDT | Online
FREE

Oct. 4: Pasture Walk - Summer Pasture Walk

Hosted by: Great River Graziers/Kickapoo Grazing Initiative
10:30 a.m. | Canton, MN
FREE

Hosted by: University of Missouri Extension
Stockton, MO
\$150.00/person; \$50.00/additional person from the same farm

Oct. 18: Webinar - Introduction to Pastured Pigs

Hosted by: Food Animal Concerns Trust
1 p.m. EDT | Online
FREE

View more upcoming events on our website

POLL

What's your best way to communicate with customers?

Face to face

Select

My website & email

Select

Social media

Select

Text / phone call

Select

I don't sell direct to consumers

Select

Previous poll results:

Do you use native warm-season perennials in your grazing?

- **I'm trying to start - 50%**
- **I am, but it's a work in progress - 50%**
- I'd like to but I'm not currently - 0%
- I am, and it's working well for me - 0%
- I'm not interested - 0%

Are you planning or hosting a livestock event? Do you want to host a livestock field day? Send the details to

amos.johnson@practicalfarmers.org

STAY CONNECTED



Looking for more? Contact us today!

Amos Johnson

Livestock Education Coordinator

amos.johnson@practicalfarmers.org