

## The Monthly Feedstuff - Join Greg Judy for a grazing intensive short course

Amos Johnson <amos.johnson@practicalfarmers.org>

Fri 1/12/2024 4:04 PM

To: Carly Zierke <carly.zierke@practicalfarmers.org>



*Equipping farmers to build resilient farms and communities.*

**December 2023**



### Learn from Greg Judy in our grazing-focused workshop

Our **pre-conference grazing intensive short course** is back by popular demand! Discover how **Greg Judy**, over years of trial and error, built a profitable grazing enterprise. This wide-ranging short course is an opportunity to hear him speak on the techniques that have led him to healthy soil, resilient adaptive grazing and financial security.

You'll learn about:

- Drought management practices that may save your farm
- Building healthy soil and profit with planned grazing
- Advantages of multispecies grazing
- Economical water and fencing techniques
- Stockpiling forage for winter to reduce hay feeding
- Maximizing daily animal performance for high profits
- Tips for finding profitable grazing leases and working with landowners

**Register today**

## ANNUAL CONFERENCE SESSION SAMPLER

### Overwintering honeybees



It's a common refrain among beekeepers to list their winter losses and guess the cause. According to the Bee Informed Partnership, Iowa has one of the highest winter colony mortalities in the country.

This high death rate is not inevitable. In this annual conference session, hear how **Katie Flinn** prepares her hives, and how she cares for them over the winter.

---

### Entomology where you graze



The insects in the soil, in the air and on your livestock are all helping to tell the story of your land. But understanding what that story is saying can be tricky.

Learn from **Torrey Wilson** at this year's annual conference as he shares the signs and species you should be looking for to indicate ecosystem health, and how to encourage them.

---

### Pasturing pigs in woodlots



Pigs are resourceful omnivores and don't require lush grazing to thrive. That allows them to use woodlots that might not otherwise support livestock. But pigs can also be very destructive to the land they're kept on.

At the annual conference, join **Ethan Book** to learn how he makes use of his marginal woodland, and how he manages for the health of both forest and pigs.

[View the conference schedule and register today](#)

**BEYOND THE GATE**

**Funding opportunities from FACT**



The Food Animals Concerned Trust is offering two funding opportunities for livestock producers.

First, they are offering **fund-a-farmer grants**, providing up to \$3,000 for diverse livestock projects.

Second, they have **conference scholarships** of up to \$400 for livestock and poultry farmers to attend educational events – **including PFI's annual conference!**

---

## New grant to support agroforestry on your farm



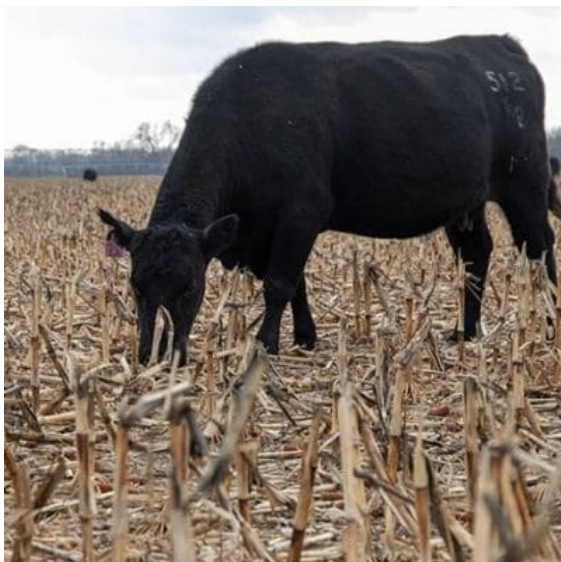
One of the largest hurdles to adopting new practices can be the financial investment required.

**A new Nature Conservancy grant** aims to increase the use of agroforestry on the landscape. Funding and technical assistance is available for those interested in planting trees for silvopasture.

**Learn more and apply.**

---

## Grazing cornstalks to maximize forage



With the summer drought limiting regrowth on pasture and raising hay prices, corn stalks may be an important part of your forage chain this year.

[This article from Hay and Forage Grower](#) highlights the financial and soil health benefits of grazing livestock on stubble. It is also a quick how-to guide to get started.

If you're looking for more forage to lengthen your grazing season, check out the [Midwest Grazing Exchange](#) for opportunities near you!

## UPCOMING EVENTS

### Register for PFI's 2024 Annual Conference



**Jan. 19-20 | Des Moines, IA**

Registration for PFI's 2024 Annual Conference, happening Jan. 19-20, is now open. Please note: We're excited to be hosting the conference at the Iowa Events Center in Des Moines this year!

This year's conference will cover livestock topics like managing grazing during drought, establishing a meat CSA and overwintering honeybees. [Register now!](#)

---

### Friends of PFI events

**Jan. 8: Webinar – [Raising Your Prices Without Losing Customers](#)**

*Hosted by: Penn State Extension*  
11-11:30 a.m. | [Online](#)

**Jan. 11: Webinar – [Telling the Story of your Farm: The benefits of pasture raised meats](#)**

*Hosted by: Food Animal Concerns Trust*  
12 p.m. | [Online](#)

**Jan. 11: Webinar – Impacting the Soil During the Winter with Bale Grazing**

Hosted by: Understanding Ag  
7 p.m. | [Online](#)

**Jan. 15: Webinar – Fundamentals of Feeding the Cow Webinar Session 1**

Hosted by: University of Nebraska Extension  
7:30-8:45 p.m. | [Online](#)

**Jan. 16: Webinar – Maximize Your Online Store**

Hosted by: Food Animal Concerns Trust  
2 p.m. | [Online](#)

**Jan. 16: Webinar – Small Ruminant Winter Webinar Series- Breeding Management**

Hosted by: N.C. Cooperative Extension, Union County  
7-9 p.m. | [Online](#)

[View our events calendar](#)

## Contact our team

**Margaret Chamas**

Livestock Viability Manager  
[margaret.chamas@practicalfarmers.org](mailto:margaret.chamas@practicalfarmers.org)

**Amos Johnson**

Senior Livestock Education Coordinator  
[amos.johnson@practicalfarmers.org](mailto:amos.johnson@practicalfarmers.org)

[Donate today](#)

[Join Practical Farmers](#)



© 2023 Microsoft Dynamics. All rights reserved.

1615 Golden Aspen Dr Suite 101

[Unsubscribe](#)