

## Practical News - Making your farm more profitable with habitat

Practical Farmers of Iowa <info@practicalfarmers.org>

Fri 3/22/2024 2:03 PM

To:Carly Zierke <carly.zierke@practicalfarmers.org>



**March 4, 2024**

*Equipping farmers to build resilient farms and communities.*



### **Highlights from horticulture farmer meet-ups**

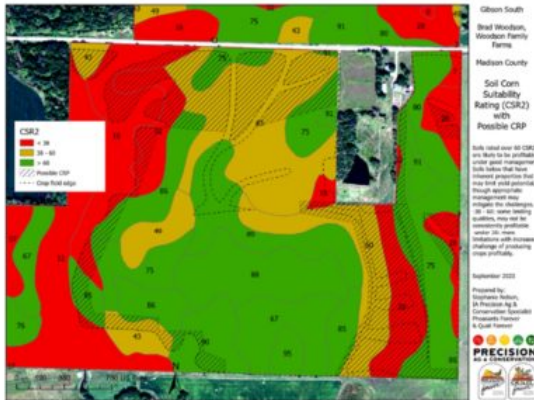
Last week, we wrapped up the last of our 2024 horticulture farmer meet-ups, which took place in six communities across Iowa. These small gatherings were led by farmer hosts, and helped growers reconnect before embarking on the season ahead.

At several gatherings, attendees were curious to discuss [\*\*Iowa's Local Food Purchasing Assistance Program\*\*](#) and the new [\*\*Iowa Resilient Food System Infrastructure program\*\*](#). Both programs focus on ways to build capacity in our local food system (and don't forget that pre-proposals for RFSI equipment grants are due this Friday, March 8).

Stay connected with future horticulture events by [\*\*signing up for our monthly newsletter, The Practical Horticulturist.\*\*](#)

## ON THE BLOG

### Blog: "Can Habitat Make Your Farm More Profitable?"



In his three-part blog series, **Brad Woodson**, PFI's habitat viability manager, explains how he used conservation analysis data from Pheasants Forever to pinpoint low-yielding areas on his farm and enroll them in conservation programs.

"I was immediately struck by the red areas on the map," Brad says. "I assumed all parts of the field would be profitable or break even but that is simply not true." [Read part one of the series.](#)

## NEWS

### Raising corn this year? Put your soil health and nitrogen fertilizer rates to the test



Recent research suggests that biologically healthy soils need less fertilizer. **If you've been working to improve your soil health, we think you can reduce nitrogen to corn without sacrificing yield.**

Enroll in our replicated strip trial comparing your typical nitrogen rate with a reduced rate of your choosing. You'll receive a \$1,000 research participation fee for completing the trial. [Learn more and apply.](#)

---

**Work with us! PFI is hiring a grants manager**



PFI is looking for a detail-oriented individual to be our next grants manager.

You will play a key role in our success by shepherding our diverse grant portfolio, which helps sustain our operating budget of over \$11 million and encompasses a range of federal, state and foundation grants.

[View the full position description and apply today.](#)

## Give recognition to a landowner who's made a difference



The founding members of Hidden Falls LLC were the recipients of PFI's 2023 Farmland Owner Legacy Award.

PFI is now accepting nominations for the 2024 [Farmland Owner Legacy Award](#), highlighting the vital role non-operator landowners play in shaping the agricultural landscape, rural communities and opportunities for beginning farmers.

Award recipients must be members of PFI. If you'd like to nominate someone but aren't sure whether they are a member, we're happy to check for you.

[Submit your nomination by Tuesday, March 19.](#)

## UPCOMING EVENTS

Winter webinar: "Developing a Meat CSA"



**Tuesday, March 5 | Noon-1 p.m.**

During this week's winter webinar, you'll hear from **Peter Allen** of Mastodon Valley Farm in Viola, Wisconsin, about the unique meat CSA subscription model he's been using for the last 10 years.

Peter will talk about how to build and manage an e-commerce website, and how to decide the best way to market your farm's products depending on your context. [\*\*RSVP for a reminder.\*\*](#)

---

## More upcoming events

*All events listed are in Central time.*

### **March 12: Webinar – [Building a Farm for Shepherding](#)**

*Hosted by: Wendy Johnson*  
Noon-1 p.m. | [Online](#)

### **March 12: Social – [Field Crop Farmer Social](#)**

*Hosted by: Will and Cassie Cannon*  
1-3 p.m. | Prairie City, IA

### **March 19: Webinar – [An Alternative Third Crop? Relay Cropping Winter Camelina With Soybeans](#)**

*Hosted by: Robert Harvey*  
Noon-1 p.m. | [Online](#)

### **March 26: Webinar – [Trees and Bees: How Agroforestry Benefits Insects and Farmers](#)**

*Hosted by: Ann Novak and Sally McCoy (Bouska sisters) & Zach Burhenn*  
Noon-1 p.m. | [Online](#)

[View our events calendar](#)

## IN THE NEWS

### Members in the News

*Showcasing member voices and their diverse, independent viewpoints.*

**Tom Pyfferoen** of Pine Island, MN, **Tony Rossman** of Oronoco, MN, and **Paul Kylo, Kevin Connelly and Martin Larsen** of Byron, MN, were featured in [Agweek: \*\*Farmer-led education leads to a soil health solution in Olmsted County.\*\*](#)



**Lee Tesdell** of Slater, IA, was featured on [The Fallon Forum](#) podcast: [A new angle on stopping eminent domain abuse](#)

**Patti and George Naylor** of Churdan, IA, were featured in [BNN Breaking: At Marbleseed Event, Organic Farmers Tackle Inflation and Accessibility Challenges](#)

**Mark Stokes** of Chatfield, MN, and **Martin Larsen** of Byron, MN, were featured in [Civil Eats: Can Taller Cover Crops Help Clean the Water in Farm Country?](#)

**Mitchell Hora** of Brighton, IA, was featured on [Brownfield Ag News: Farmers play a part in decarbonizing ethanol](#)

**Andrea Evelsizer** of Clear Lake, IA, and **Jan Libbey** of Kanawha, IA, were featured in [Globe Gazette: Healthy Harvest of North Iowa officials cite growing importance of local foods](#)

## PFI in the News

**Valeria Cano Camacho**, PFI's senior Latino engagement coordinator, and **Liz Kolbe**, PFI's farmer-led education director, were featured on [Iowa's News Now: Iowa organization aids Spanish speaking aspiring farm owners](#)

**Have you been featured in the media?** If you're a PFI member, tell us when and where to find a link to the article, and we'll feature you in a future issue of Practical News.

**Contact:** [elizabeth.wilhelm@practicalfarmers.org](mailto:elizabeth.wilhelm@practicalfarmers.org)

[Donate today](#)

[Join Practical Farmers](#)

**Love Practical News?** [Sign up for our specialty email newsletters.](#) In addition to our weekly email newsletter, Practical News, we also publish five monthly newsletters each focused on a different farming specialty.

