



Outlook

Practical Landowner - Make your land more profitable with habitat

From Martha McFarland <martha.mcfarland@practicalfarmers.org>

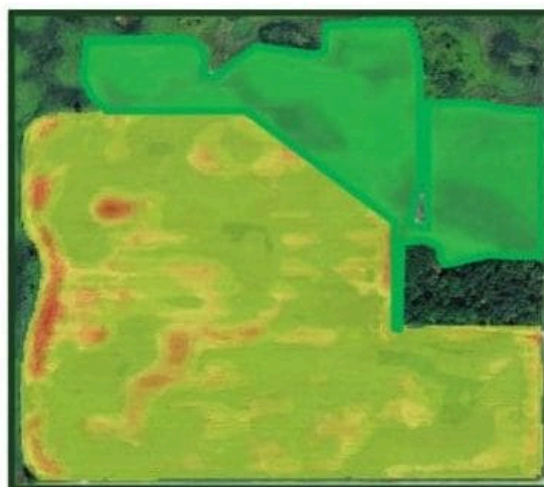
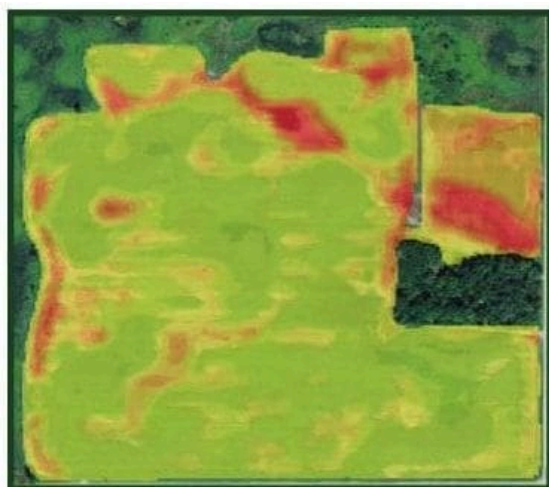
Date Thu 10/24/2024 2:39 PM

To Anna Pesek <anna.pesek@practicalfarmers.org>



April 2024

Equipping farmers to build resilient farms and communities.



Taking unproductive acres out of production to increase profits

Have you ever wondered how to determine when removing acres from crop production is best?

Through our partnership with Pheasants Forever, you can connect with a local precision ag and conservation specialist who can help you identify unprofitable acres and consider alternative profitable management solutions that also provide conservation benefits. [Learn more.](#)

PFI staff can also help you navigate the many financial and technical conservation programs offered by federal, state and local organizations.

All consultations are private and farm-specific data will be kept confidential. There is no requirement for public access to participate in this program.

PROGRAM UPDATES

Exploring cover crops in our new video series



Dive into the world of cover crops with PFI's **"Practical Cover Croppers" video series.**

This series of short videos at farms across Iowa and Minnesota cover a range of topics from the advantages of planting cover crops to technical topics like planter settings and roller crimping.

Get personalized help with PFI's Land Connections



More often than not, finding a land match takes a personal touch. **Martha McFarland**, PFI's senior farmland viability coordinator, can help!

Martha specializes in fostering personal connections around land, linking landowners with aspiring farmers. To get started, reply to this email to let Martha know your farm location, acres of land, desired enterprises and the land arrangement you seek.

Nominations are now open for the Iowa Leopold Conservation Award



PFI member Loran Steinlage won the 2023 Iowa Leopold Conservation award.

Nominations are now open for the 2024 Iowa Leopold Conservation Award. The \$10,000 award honors ranchers, farmers and forestland owners who go above and beyond in their land management.

Past winners include PFI members **Loran Steinlage** in 2023 and **Seth, Christy, Spencer and Tatum Watkins** of Pinhook Farm in 2022.

Nominate someone you know today.

Get started grazing covers



Curious about grazing cover crops?

Our **grazing cover crops tool kit** features videos, PFI research, calculators and other web resources to determine whether grazing covers could be a good fit for your land.

Be sure to also check out the **Midwest Grazing Exchange**, where landowners and graziers can connect.

UPCOMING EVENTS

Webinar: "Precision Conservation: Increasing Profitability and Conservation on Your Farm"



Tuesday, April 16 | Noon-1 p.m.

Join row crop farmer **Jacob Bolson** as he leads a live virtual tour of his acreage, which is enrolled in a new five-year contract with the Natural Resource



Conservation Service's Conservation Stewardship program for pollinator habitat.

Stephanie Nelson, of Pheasants Forever, will then explain how yield and satellite data lends itself to conservation analysis. [RSVP to join.](#)

Upcoming PFI events

All events listed in Central time.

April 23: Webinar – [Diversifying Pollinator Habitat on a Multi-Generational Illinois Farm](#)

Hosted by: John & Nancy Brannaman
12-1 p.m. | [Online](#)

Friends of PFI events

April 10: Webinar – [One Size Does Not Fit All: Targeting Conservation Practices to Reduce Phosphorus Loss Risk in the Lake Erie Watershed](#)

Hosted by: Iowa Learning Farms
Noon-1 p.m. | [Online](#)

April 13: Event – [Sandhill Crane Count \(Polk County\)](#)

Hosted by: Iowa Natural Heritage Foundation
6-8:30 a.m. | Polk County, IA

[View our events calendar](#)

Contact us

Martha McFarland
Senior Farmland Viability Coordinator
martha.mcfarland@practicalfarmers.org
(641) 229-6701

[Donate today](#)

[Join Practical Farmers](#)



© 2023 Microsoft Dynamics. All rights reserved.

1615 Golden Aspen Dr Suite 101

[Unsubscribe](#)