



Practical News - New data from 2024 oat variety trial + Register for Midwest Meat Summit

From Practical Farmers of Iowa <info@practicalfarmers.org>

Date Fri 12/13/2024 2:15 PM

To Anna Pesek <anna.pesek@practicalfarmers.org>



November 11, 2024

Equipping farmers to build resilient farms and communities.



PFI research helps find best oat varieties for Iowa

Oats are ripe with opportunity for farmers in the Midwest. They can improve soil, diversify income streams and help farmers establish hay and pasture.

Since 2015, Practical Farmers of Iowa has helped organize oat and other small-grain variety trails at Iowa State University research farms. In 2024, PFI tested 16 oat varieties at four locations across the state, which were later screened for yield and test weight.

Understanding which oat varieties are most successful in various locations and conditions can help farmers make practical planting decisions. [Explore the full research report.](#)

NEWS

Introducing the Midwest Meat Summit



The inaugural [Midwest Meat Summit](#) will take place before PFI's 2025 Annual Conference at the Iowa Events Center in Des Moines, Iowa, on Jan 9-10.

With five sessions over two days, the summit, which is part of a national series of events, will offer a chance for producers and livestock industry professionals to network, connect and learn with one another.

[Register today to attend.](#)

Win two free nights at the Hilton Des Moines Downtown for PFI's annual conference



Thinking of attending PFI's 2025 Annual Conference in January?

If you **register by Dec. 6**, you'll be entered into a drawing for a free hotel room at the Hilton Des Moines Downtown hotel during the conference, Jan. 10-11 at the Iowa Events Center.

Don't miss your chance to win!
[Register today.](#)

Magazine article: "Grow Where You're Planted"

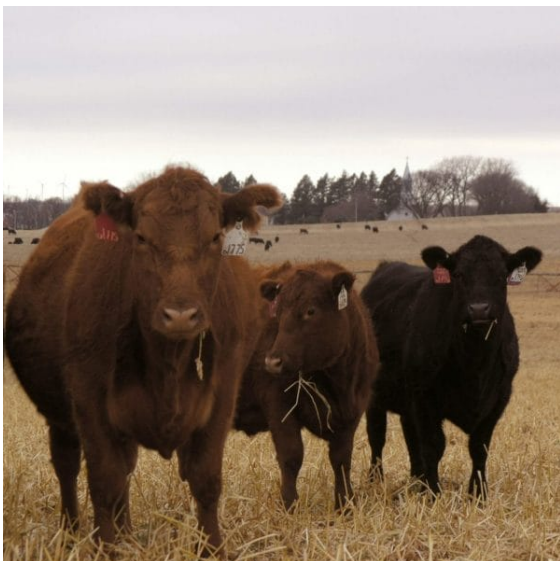


Urban farmers face the same challenges as their rural peers – weather, identifying markets, weed and pest control, accessing land and more. But they also face unique constraints.

In this magazine article, **Monika Owczarski, Lee Goldsmith** and **Stephen Hansen** share how connection to land and community drives them to grow within the spaces they've found in their communities.

[Read the full article from the Autumn 2024 PFI magazine.](#)

The impact of PFI's grazing cost-share



Since 2021, 18 farmers received up to \$5,000 each to purchase portable, temporary grazing equipment through PFI's grazing infrastructure cost-share.

As a result of the program, these farmers were able to:

- graze livestock for more days
- save on winter feed cost
- lengthen pasture rest periods

[Read the full details in a new fact sheet.](#)

UPCOMING EVENTS

Nov. 16: Conference – Iowa Farmers of Color Conference
Hosted by: Iowa Farmers of Color
10 a.m.-4 p.m. | Urbandale, IA

Nov. 21: Field Day – A Farmer's Soil Health Journey: No-Till Cover Crop Synergies
Hosted by: Keith Lovrien
9-11 a.m. | Plainfield, IA

[View our events calendar](#)

IN THE NEWS

Members in the News

Showcasing member voices and their diverse, independent viewpoints.

Aaron White of Carlisle, IA, was featured in [3BL: PepsiCo Foods North America Aims to Reduce Barriers to Entry for U.S. Farmers](#)

Dan Voss of Atkins, IA, and **Marty Lenss** of Cedar Rapids, IA, were featured in [Corridor Business Journal: New Wings2Water 'Water Warrior' award to recognize difference-makers](#)

Emma Barber of Springville, IA, was featured in [The Gazette: Iowa Restaurant Association, state alliance launch Iowa Farm to Table Dinner Series](#)

Jenny Quiner of Des Moines, IA, was featured on the [Permaculture Voices: Business | Gardening | Susta Podcast: Minimum Viable Product](#)

Noah and Dan Taylor of Bouton, IA, were featured in [Progressive Farmer: Cattle Help Unlock Cover Crop Benefits](#)

Todd Western III of Maple Grove, MN, was featured in [Successful Farming: Farmers of Color Conference Offers Resources, Networking](#)

Wendy Johnson of Charles City, IA, was featured in [Farms.com: Women in Ag Coming Together to Cultivate Confidence and Harvest Happiness](#)

Have you been featured in the media? If you're a PFI member, tell us when and where to find a link to the article, and we'll feature you in a future issue of Practical News.

Contact: elizabeth.wilhelm@practicalfarmers.org

Donate today

Join Practical Farmers

Love Practical News? [Sign up for our specialty email newsletters.](#) In addition to our weekly email newsletter, Practical News, we also publish five monthly newsletters each focused on a different farming specialty.



© 2023 Microsoft Dynamics. All rights reserved.

1615 Golden Aspen Dr Suite 101

[Unsubscribe](#)