



---

**Practical News - Registration is open for the Iowa Farmers of Color Conference + PFI is hiring!**

---

From Practical Farmers of Iowa <info@practicalfarmers.org>

Date Fri 12/13/2024 2:09 PM

To Anna Pesek <anna.pesek@practicalfarmers.org>



**October 28, 2024**

*Equipping farmers to build resilient farms and communities.*



## Fall flower farmer meet-up builds connections and cultivates curiosity

On Oct. 20, in Waverly, Iowa, 20 people gathered at **Tricia and Seth Engelbrecht's** flower farm to share experiences from the past growing season, discuss challenges and successes and enjoy making a dried flower craft together.

Tricia began the meet-up with a tour of their post-harvest barn space as well as their high tunnel and field garden, where the Engelbrechts offer U-pick flowers.

One particularly engaging topic during the meet-up was a discussion on aster yellows disease, which many flower farmers having been dealing with this season. Growers also shared tips and tricks for incorporating cover crops into a small- to medium-sized flower farm. [Explore future PFI events.](#)

### NEWS

## Sustainable Agriculture Business Incubator offers high-level business coaching



This new program is ideal for agricultural entrepreneurs and businesses seeking high-level business coaching that can help them solve problems, remove barriers and reach their goals.

**Examples of businesses that may be a good fit include** farmers with a value-added product they want to scale up, food or grain mills, cover crop seed businesses, aggregators and distributors of locally produced food and more.

[\*\*Apply for the program by Nov. 4.\*\*](#)

---

## Apply for Savings Incentive Program by Nov. 4



**Stennie Nelson**, a member of the Savings Incentive Program Class of 2023, shares how the program impacted her farm business.

"This program provided me with the framework and accountability to revise my business plan, and the reminder that it can serve as a living document to guide management during the year. I also appreciated the mentorship aspect of the program, and the savings match was really helpful too."

[Apply for SIP.](#)

---

## Welcome Tracy to PFI staff



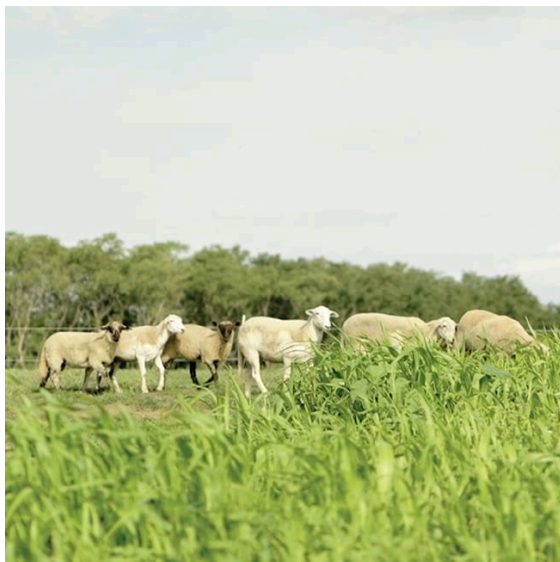
PFI is thrilled to welcome **Tracy Engel** as a senior geospatial data coordinator. In this role, she is working to design and implement a new enterprise geographic information system data architecture to support spatial analytics and on-farm research analyses.

Tracy has over 30 years of experience in GIS and has worked in both the public and private sectors to support projects in natural resource management, environmental remediation, telecommunications and renewable energies. [Learn more about Tracy.](#)

---

## "Practical Cover Croppers" video: Integrating livestock for soil health





In a recent addition to our "Practical Cover Croppers" series on YouTube, **Jordan Clasen** of Grade A Gardens in Earlham, Iowa, discusses grazing sheep and Coco the Dexter cow to contribute to the fertility and regenerative focus of their farm.

**Watch the video** to learn more about getting started with grazing perennial grasses and cover crops, including information about varieties, rotation and the mix of covers they use for summer, fall and winter.

## PFI's team is growing with a farm systems viability manager



We're seeking a **farm systems viability manager** to manage our largest financial and technical assistance programs and a growing team of staff who advise farmers looking to adopt new practices in their farming operations.

As the farm systems viability manager, you'll be responsible for ensuring execution of our largest programs that impact millions of acres of crop ground in Iowa and surrounding states.

**[Apply for this position.](#)**

## UPCOMING EVENTS

**Register now for the Iowa Farmers of Color Conference**



**Saturday, Nov. 16 | 10 a.m.-4 p.m. | Urbandale, IA**

**Registration is open** for the Iowa Farmers of Color Conference.

This gathering, hosted by the group Iowa Farmers of Color, is an invaluable opportunity for farmers of color from all enterprises throughout the Midwest. The day will include opportunities to network and connect, enterprise and business planning sessions, chances to learn about programs from service providers and a keynote address from **Denise Greer Jameson**.

## More upcoming events

*All events listed are in Central time.*

### **Nov. 5: Spanish Field Day – Fall Grazing and Pasture Management**

*Hosted by: Adam Ledvina*  
5-7:30 p.m. | Chelsea, IA

### **Nov. 7: Spanish Workshop – Holistic Management, FSA & Legal Issues**

6-8 p.m. | **Online**

### **Nov. 9: Field Day – Balancing Your Farm Dream With Your Family's Needs**

*Hosted by: Kendra & Kevin Martin*  
9 a.m.-Noon | Mount Ayr, IA

[View our events calendar](#)

## IN THE NEWS

### Members in the News

*Showcasing member voices and their diverse, independent viewpoints.*

**Arlyn Kauffman** of Weldon, IA, **Lyndon Miller** of Leon, IA, and **Sally Worley**, PFI's executive director, were featured in [KBIA: Going against the grain: Community support is a key element to scaling regenerative agriculture](#)

**Bob and Kristy Walker** of Iowa City, IA, were featured in [The Daily Iowan: New agritourism coalition promotes business through bus rides around Johnson County](#)

**Paul Rasch** of Solon, IA, was featured on [We Are Iowa: Wilson's Orchard & Farm in Cumming hosting 1st Pumpkinfest](#)

**Seth Watkins** of Clarinda, IA, was featured on [The Big Show: Iowa's Front Forty: Seth Watkins](#)

**Tim Kelley** of Elmo, MO, **Brent Nold** of Savannah, MO, and **Sally Worley**, PFI's executive director, were featured in [Progressive Farmer: Landowner Earns Farmland Legacy Award](#)

---

**Have you been featured in the media?** If you're a PFI member, tell us when and where to find a link to the article, and we'll feature you in a future issue of Practical News.

**Contact:** [elizabeth.wilhelm@practicalfarmers.org](mailto:elizabeth.wilhelm@practicalfarmers.org)

Donate today

Join Practical Farmers

**Love Practical News?** [\*Sign up for our specialty email newsletters.\*](#) *In addition to our weekly email newsletter, Practical News, we also publish five monthly newsletters each focused on a different farming specialty.*



© 2023 Microsoft Dynamics. All rights reserved.

1615 Golden Aspen Dr Suite 101

[Unsubscribe](#)