

 Outlook

Beginning Farmer News - Marketing Assistance for Specialty Crops Program closes Jan. 8

From Rachel Burke <rachel.burke@practicalfarmers.org>

Date Thu 1/30/2025 11:39 AM

To Anna Pesek <anna.pesek@practicalfarmers.org>



PFI's 2025 Annual Conference is this week, Jan. 10-11! **Walk-in registration is available for the annual conference, the Midwest Meat Summit and the preconference short courses.** [Explore the schedule and plan your attendance.](#)

January 2025

Equipping farmers to build resilient farms and communities.

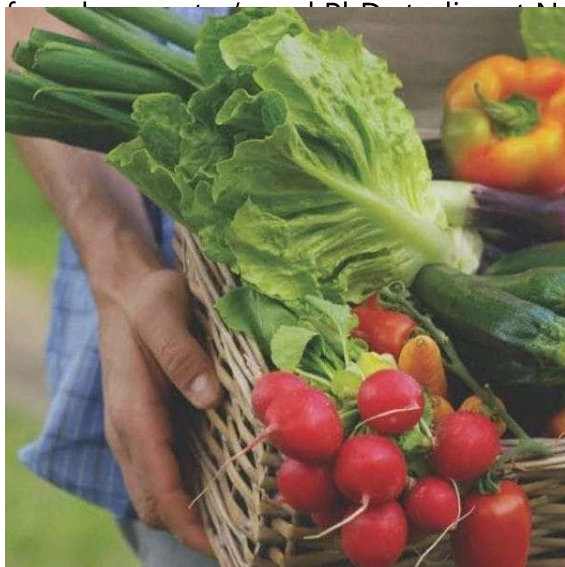


Meet Lais Bastos Martins from Trust in Food

BEGINNING FARMER RESOURCES

Lais Bastos Martins serves as a sustainable commodities technical manager at

Trust in Food, an initiative of Farm Journal that strives to speed up the adoption of climate-smart practices to build a more resilient agricultural system. To this mission, she brings her expertise in crop science with a focus on plant breeding



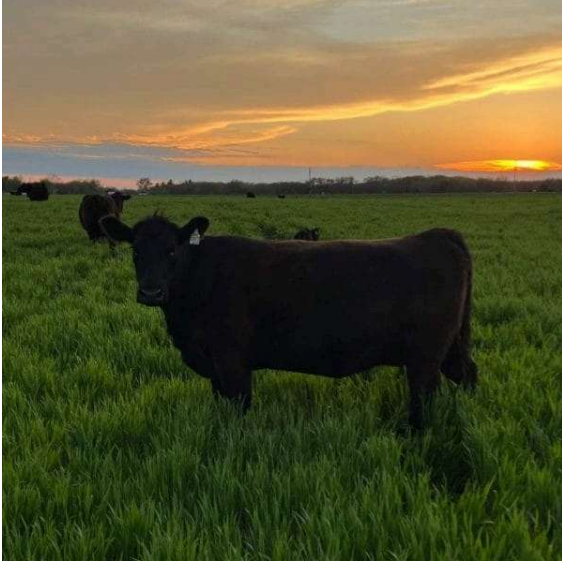
at North Carolina State University. The Farm Service Agency is providing \$2 billion in funding through the new Marketing Assistance for Specialty Crops Program designed to help specialty crop producers expand domestic markets, develop new markets and tackle higher costs.

can beginning farmers ask you?

Eligible specialty crops include fruits, vegetables, tree nuts, nursery crops, Christmas trees, floriculture, honey, and just share your hops, maple sap, tea, turtgrass, grass seed, and culinary and medicinal herbs and spices.

Applications close on Jan. 10.

Are you a grazier interested in leasing land?



Several PFI members are seeking farmers to take over their grazing operations. **Tim Kelly**, who received last year's Farmland Owner Legacy Award, is one of those farmers. Located just across the border in Elmo, Missouri, Tim says the ideal person is experienced in or wants to learn about adaptive grazing, soil health, pasture and livestock management. Please email martha.mcfarland@practicalfarmers.org to connect with Tim.

Search the [Midwest Grazing Exchange](#) to find land available for grazing lease near you.

Tune in for our winter webinar series



Winter is a perfect time to access farmer-to-farmer learning from the comfort of your home.

Our winter webinars are 60-minute online presentations that are free for everyone.

Our first webinar of the 2025 series, ["Using CRP To Foster Biodiversity on a 160-Acre Iowa Farm,"](#) will take place on Jan. 21.

[View the full schedule and register.](#)

New research: Does drip irrigation improve potato productivity?



Irrigation can boost potato yield, depending on rainfall and soil conditions.

In this trial, **Lee Matteson** wanted to find out how much more his potato plants would yield with irrigation – and if that yield boost would be enough to make up for the cost of setting up and using irrigation systems.

While wet weather affected this year's results, Lee plans to repeat the trial to see how irrigation would help in a drier year, and to inform his calculations about the return on investment.

[Explore the full research report.](#)

Explore resources from Land For Good



Land For Good is a nonprofit that seeks to expand secure farmland access, tenure and transfer.

They can help you with:

- Goals and finances
- Alternative tenure methods
- Land searches
- Leases and land agreements
- Maintaining relationships with stakeholders

[Learn more about their farm seeker services.](#)

UPCOMING EVENTS

Hone your skills with the **Commercial Apple Growers Workshop**



**Tuesday, Jan. 28 | 8 a.m.-4 p.m. |
Cumming, IA**

PFI's Commercial Apple Growers Workshop will take place on Jan. 28, 2025, at Wilson's Orchard & Farm in Cumming, Iowa.

Hear from regional experts and fellow growers on apple production, connect with other growers and take part in a hands-on pruning workshop. Lunch featuring local foods will be provided, with time for networking.

Register today.

[View our events calendar](#)

Upcoming PFI events

All events listed are in Central time.

Jan. 9-10: Workshop – Midwest Meat Summit

Des Moines, IA

***Walk-in registration available**

Jan. 9-10: Short Courses – Preconference short courses

Des Moines, IA

***Walk-in registration available**

Jan. 10-11: Conference – PFI 2025 Annual Conference

Des Moines, IA

***Walk-in registration available**

Jan. 21: Webinar – "Using CRP To Foster Biodiversity on a 160-Acre Iowa Farm,"

Hosts: Clarissa Bruns and Bill Anderson

Noon-1 p.m. | **Online**

Jan. 22: Field Day – Cover Crop 101: Basics of Management, Profitability and Practicality of Crop Use

Host: Chad Petersen

4-6 p.m. | New Liberty, IA

Friends of PFI events

Feb. 1: Workshop – Land Access: Are you ready?

Hosted by: Land Stewardship
Project
10 a.m.-4:30 p.m. | Twin Cities, MN

[View our events calendar](#)

Contact our team

Rachel Burke

*Beginning Farmer Engagement
Coordinator*

rachel.burke@practicalfarmers.org

(612) 741-2492

Martha McFarland

*Senior Farmland Viability
Coordinator*

martha.mcfarland@practicalfarmers.org

(641) 229-6701

Savanah Laur

Business Viability Manager

savanah.laur@practicalfarmers.org

(515) 232-5661

[Donate today](#)

[Join Practical Farmers](#)



© 2023 Microsoft Dynamics. All rights reserved.

1615 Golden Aspen Dr Suite 101

[Unsubscribe](#)